

HTA COVID-19 UPDATE

(Issued: 7/24/20 @ 3:30pm)

Novel Coronavirus in Hawaii

COVID-19 Positive* Cases

Cumulative totals as of 12:00 noon on July 24, 2020

Statewide	Total
Total Cases	1549 (60 new)
Released from Isolation†	1148
Required Hospitalization	156
Deaths	26
BY COUNTY	Total
Hawaii County	
Total Cases	117
Released from Isolation†	108
Required Hospitalization	4
Deaths	0
Honolulu County	
Total Cases	1225
Released from Isolation†	874
Required Hospitalization	123
Deaths	19
Kauai County	
Total Cases	43
Released from Isolation†	42
Required Hospitalization	1
Deaths	0
Maui County	
Total Cases	141
Released from Isolation†	124
Required Hospitalization	26
Deaths	6
HI Residents diagnosed outside of HI	23
County Pending	0

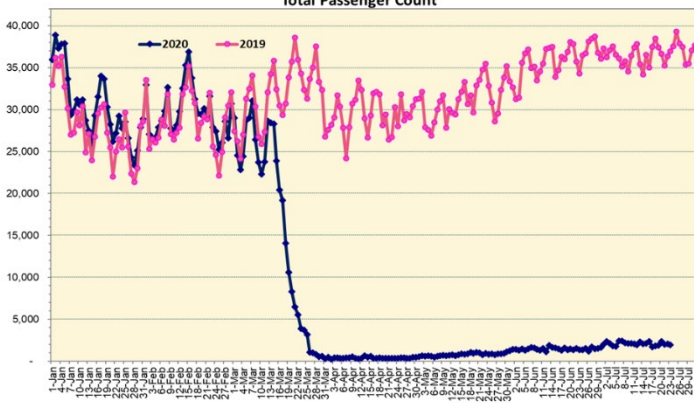
*includes presumptive and confirmed cases, data are preliminary and subject to change; note that CDC provides case counts according to states of residence.

†Isolation should be maintained until at least 3 days (72 hours) after resolution of fever and myalgia without the use of antipyretics OR at least 7 days have passed since symptom onset, whichever is longer.

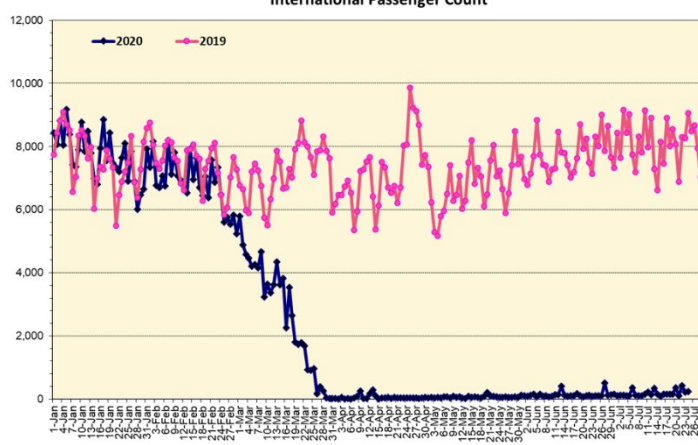
Total Passenger Count

International Passenger Count

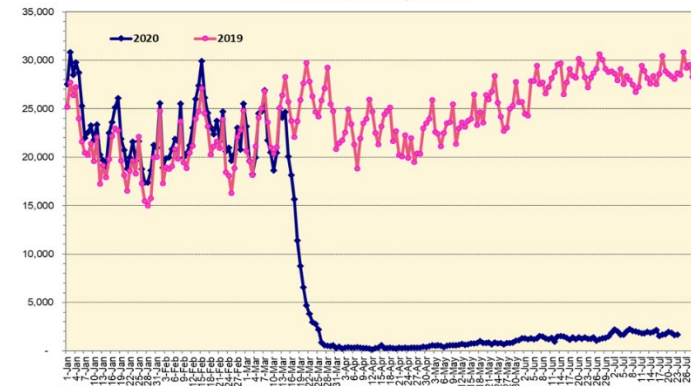
Domestic Passenger Count



Note: Excludes flights from Canada



Note: Excludes flights from Canada



Daily Passenger Count Table

07/23/2020	Domestic	International	Total
Oahu	1432	216	1648
Maui	119		119
Island of Hawaii	106		106
Kauai	46		46
State	1703	216	1919

7/24/20 Hawaii Passenger Arrivals by Air Update

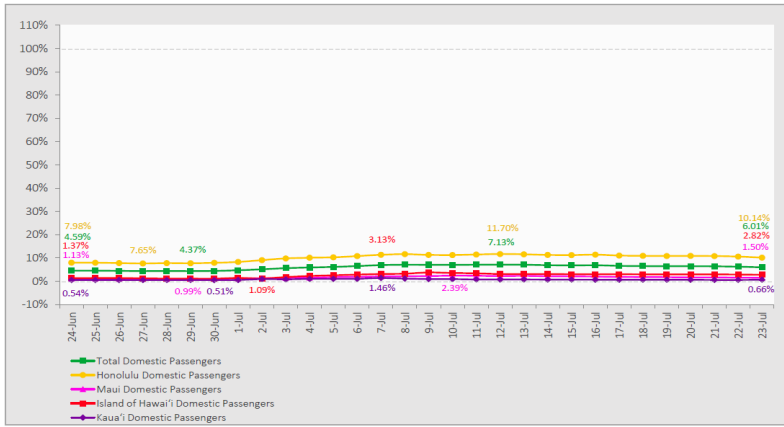
Yesterday, 2204 people arrived in Hawaii. This table shows the number of people who arrived by air from out of state yesterday and does not include interisland travel. This data was collected from the Hawaii DOT new Mandatory Travel Declaration Form.

	Kona	Maui	Oahu	Lihue	Total
Crew	6	19	234	12	271
Transit		1	189		190
Military			156		156
Exempt			122		122
Relocate to Hawaii	16	16	100	6	138
Returning Resident	56	64	584	16	720
Visitor	44	38	497	28	607
Grand Total	122	138	1882	62	2204
Flights	2	3	25	3	33

Market Impact Update: <https://www.dropbox.com/07/24/20 HTA COVID19 Update>

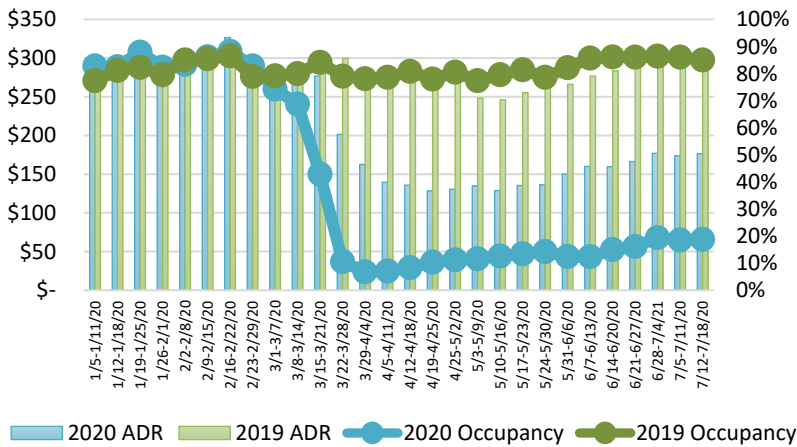
7-Day Domestic by Island Moving Average Daily Passenger Volume

2020 Volume as Percentage of 2019 Volume
Through July 23, 2020



Source: HVCB analysis based on data from DBEDT
Note: Passenger volume figures include both visitors and residents.

State of Hawai'i Hotel Performance by Week - 2020 vs 2019



Source: STR, Inc. © Copyright 2020 Hawai'i Tourism Authority

Hawaii Hotel Performance Info: For the week of July 12 – July 18, 2020

	Occupancy	ADR	RevPAR
State of Hawaii	18.7%	\$ 176.30	\$ 33.05
Oahu	22.0%	\$ 178.81	\$ 39.33
Maui County	9.3%	\$ 207.85	\$ 19.33
Kauai County	17.0%	\$ 190.39	\$ 32.29
Island of Hawaii	22.7%	\$ 133.58	\$ 30.28

Domestic by Island Month-to-Date and Year-to-Date Daily Passenger Volume

2020 Volume versus 2019 Volume
Through July 23, 2020

July 2020 (Month-to-Date through July 23)

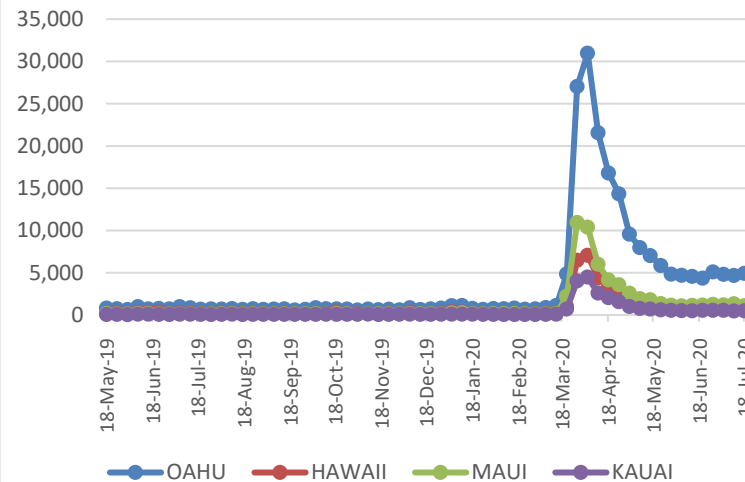
	2020	2019	Volume Change	Percent Change
Honolulu	37,302	337,398	-300,096	-88.9%
Maui County	3,383	176,823	-173,440	-98.1%
Island of Hawai'i	2,377	78,474	-76,097	-97.0%
Kaua'i	543	59,790	-59,247	-99.1%
Total	43,605	652,485	-608,880	-93.3%

2020 (Year-to-Date through July 23)

	2020	2019	Volume Change	Percent Change
Honolulu	1,065,091	2,605,273	-1,540,182	-59.1%
Maui County	448,383	1,266,284	-817,901	-64.6%
Island of Hawai'i	221,344	584,662	-363,318	-62.1%
Kaua'i	150,146	439,418	-289,272	-65.8%
Total	1,884,964	4,895,637	-3,010,673	-61.5%

Source: HVCB analysis based on data from DBEDT
Note: Passenger volume figures include both visitors and residents. Total includes other international passengers. 2020 includes one additional day due to Leap Year (February 29th, 2020).

2020 Initial Weekly Unemployment Claims by Island



Weekly Unemployment Initial Claims: July 18, 2020

State of Hawaii	7,627
C&C of Oahu	4,908
Hawaii County	996
Maui County	1,102
Kauai County	489
Agent (filed in Hawaii against another state)	132

News Highlights

July 24, 2020

Honolulu Star-Advertiser: [Hawaii hotels prepare to return to life in a COVID-19 world](#)

Honolulu Star-Advertiser: [Southwest Airlines plans full interisland service on Sept. 1](#)

KHON2: [Kalakaua Open Street canceled in light of Hurricane Douglas](#)

KHON2: [Social media influencer arrested for quarantine violations](#)

Honolulu Civil Beat: [Hawaii's Unhealthy Relationship With Tourism](#)

West Hawaii Today: [Hulihee Palace announces limited reopening](#)

West Hawaii Today: [Letters to the Editor: July 24, 2020](#)

U.S. News & World Report: [Hawaii Island Considers 'Geofence' for Quarantined Tourists](#)

Newsweek: [Do You Have to Quarantine After Flying From New York?](#)

The Hill: [Here are the states with coronavirus travel restrictions](#)

Helpful Resources

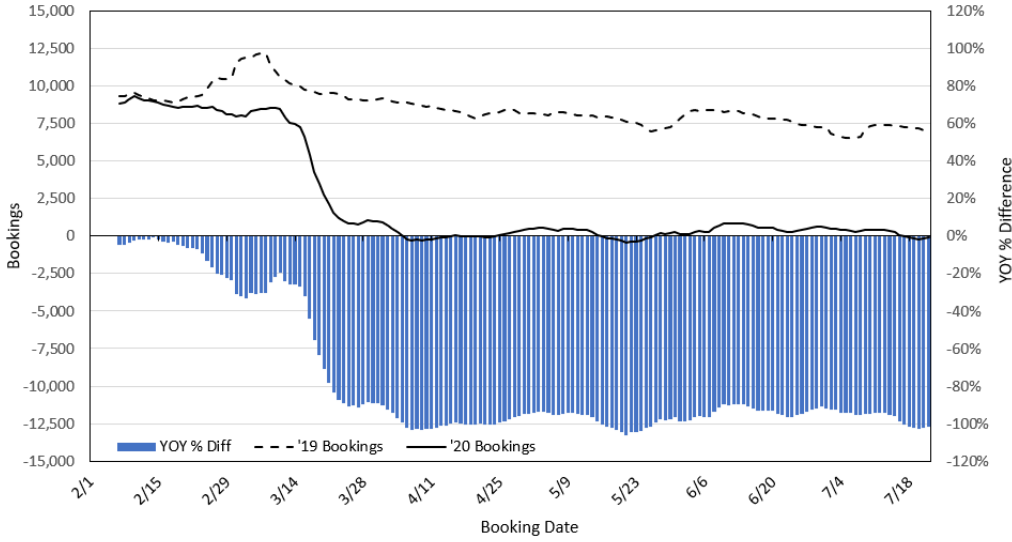
Department of Health
<https://hawaiiocovid19.com/>

Department of Health
<https://health.hawaii.gov/docd/advisories/novel-coronavirus-2019>

Dept. of Business, Economic Development & Tourism
<https://dbedt.hawaii.gov/economic/covid19/>

Department of Transportation
<https://hidot.hawaii.gov/coronavirus/>

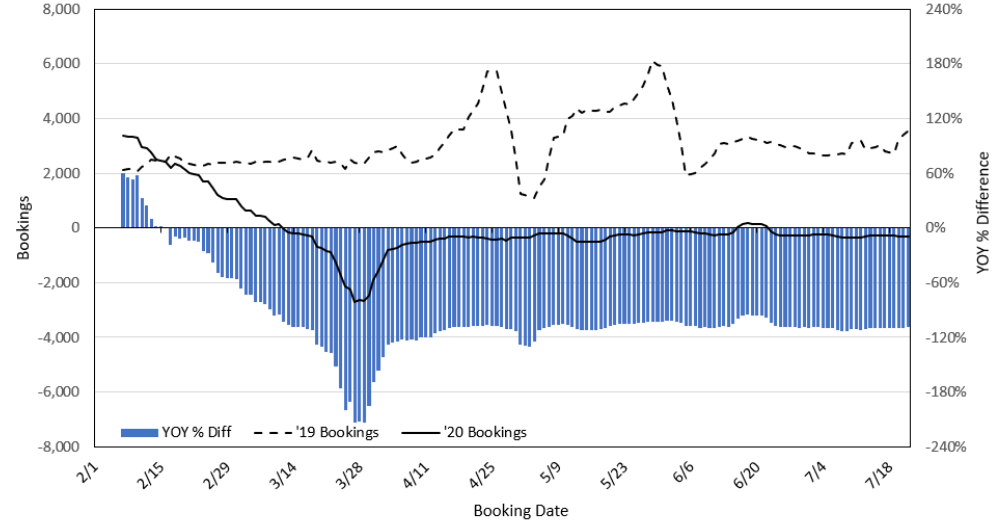
**Travel Agency Bookings to Hawaii for Future Arrivals*
Based on a 7-day Moving Average, 2020 vs 2019
U.S.**



*Future Arrivals refers to all arrivals that are 'future' relative to the referenced booking date.
Source: Global Agency Pro

Update: Jul 22, 2020

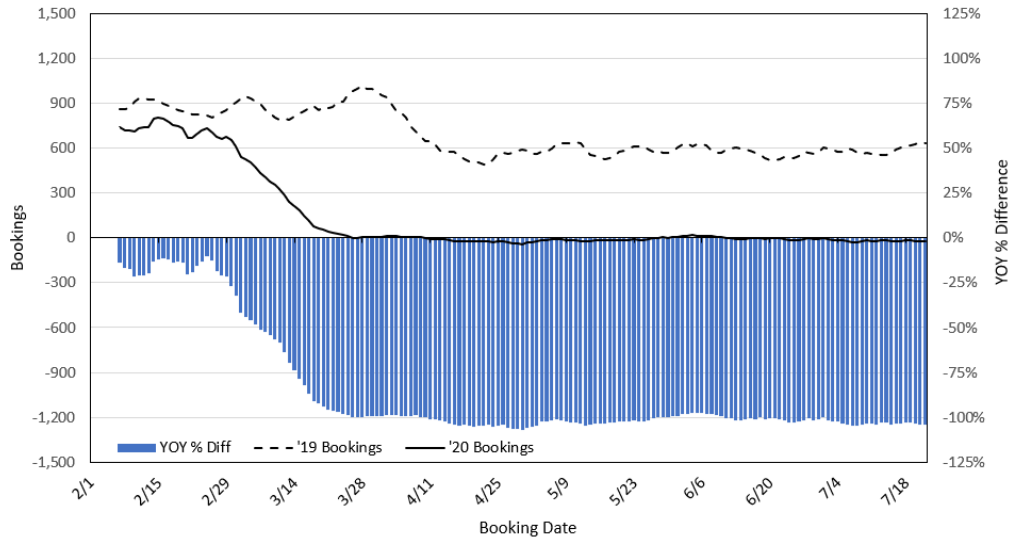
**Travel Agency Bookings to Hawaii for Future Arrivals*
Based on a 7-day Moving Average, 2020 vs 2019
Japan**



*Future Arrivals refers to all arrivals that are 'future' relative to the referenced booking date.
Source: Global Agency Pro

Update: Jul 22, 2020

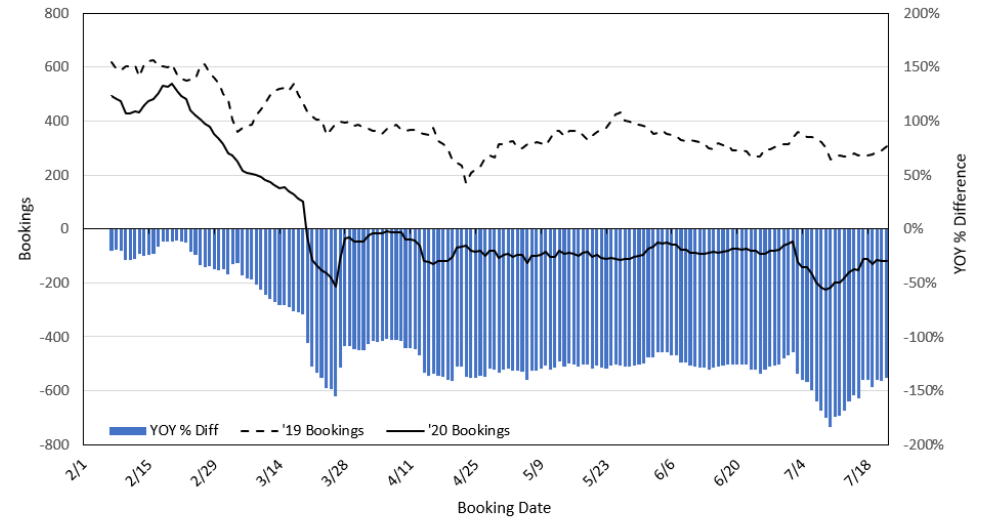
**Travel Agency Bookings to Hawaii for Future Arrivals*
Based on a 7-day Moving Average, 2020 vs 2019
Canada**



*Future Arrivals refers to all arrivals that are 'future' relative to the referenced booking date.
Source: Global Agency Pro

Update: Jul 22, 2020

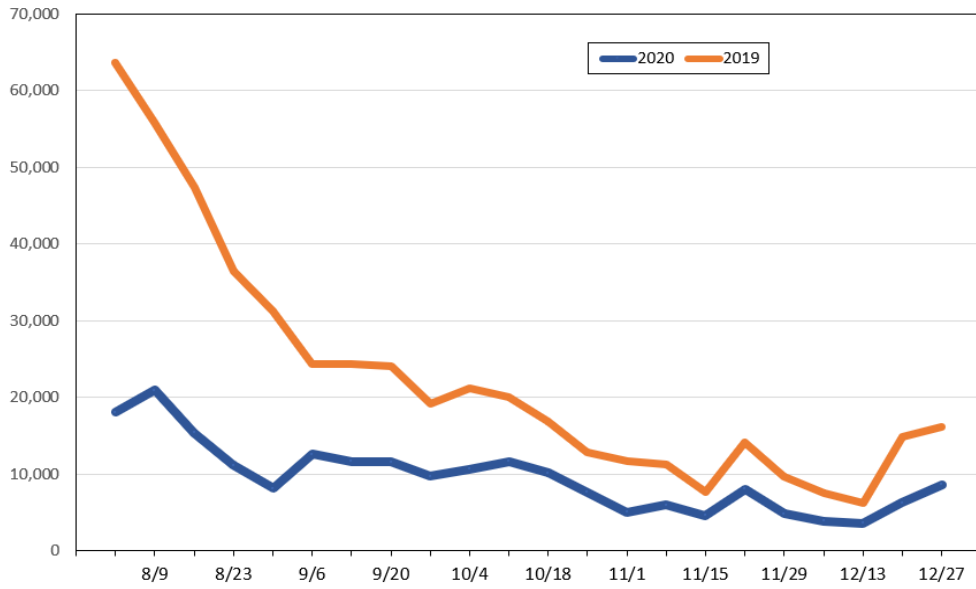
**Travel Agency Bookings to Hawaii for Future Arrivals*
Based on a 7-day Moving Average, 2020 vs 2019
Australia**



*Future Arrivals refers to all arrivals that are 'future' relative to the referenced booking date.
Source: Global Agency Pro

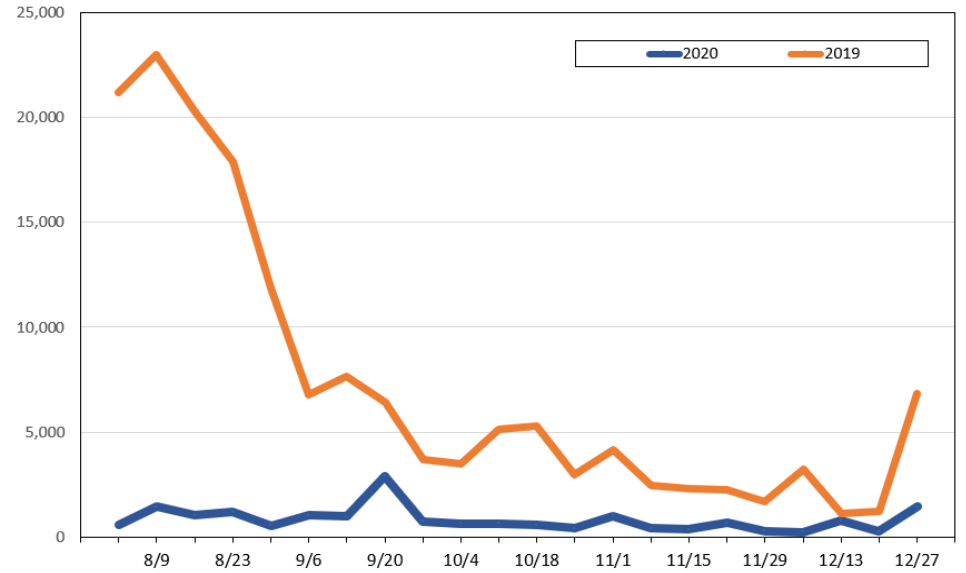
Update: Jul 22, 2020

Travel Agency Weekly Bookings for Future Travel to Hawai'i as of July 22, 2020
U.S.



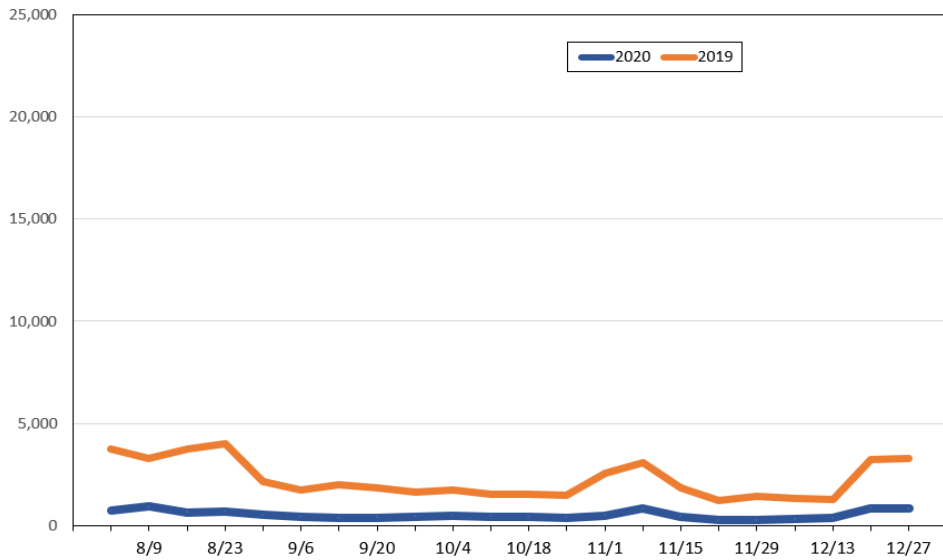
Source: Global Agency Pro, as of July 22, 2020

Travel Agency Weekly Bookings for Future Travel to Hawai'i as of July 22, 2020
Japan



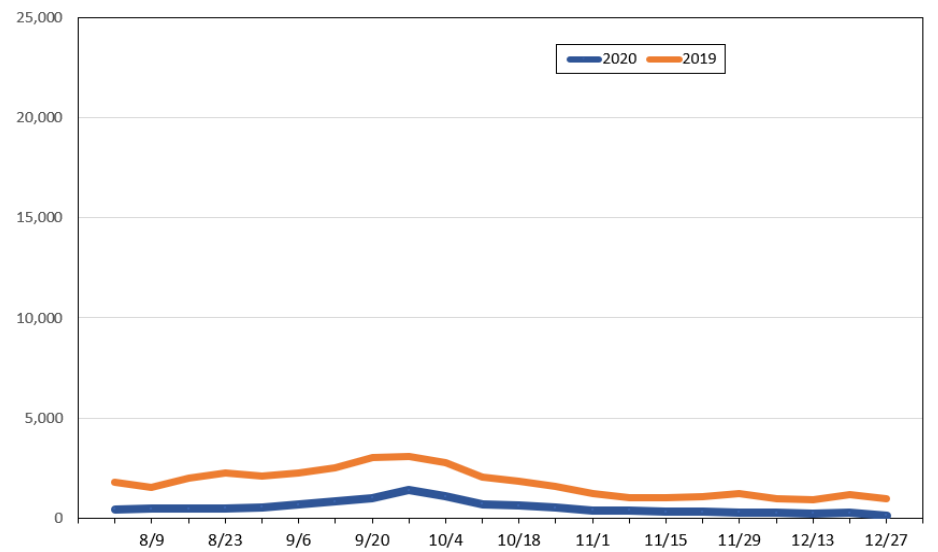
Source: Global Agency Pro, as of July 22, 2020

Travel Agency Weekly Bookings for Future Travel to Hawai'i as of July 22, 2020
Canada



Source: Global Agency Pro, as of July 22, 2020

Travel Agency Weekly Bookings for Future Travel to Hawai'i as of July 22, 2020
Australia



Source: Global Agency Pro, as of July 22, 2020