

HTA COVID-19 UPDATE

(Issued: 8/4/20 @ 4:30pm)

Novel Coronavirus in Hawaii

COVID-19 Positive* Cases

Cumulative totals as of 12:00 noon on August 4, 2020

| Statewide | Total |
|--------------------------------------|-----------------------|
| Total Cases | 2591 (144 new) |
| Released from Isolation† | 1354 |
| Required Hospitalization | 208 |
| Deaths | 27 |
| BY COUNTY | Total |
| Hawaii County | |
| Total Cases | 122 |
| Released from Isolation† | 115 |
| Required Hospitalization | 4 |
| Deaths | 0 |
| Honolulu County | |
| Total Cases | 2221 |
| Released from Isolation† | 1057 |
| Required Hospitalization | 175 |
| Deaths | 20 |
| Kauai County | |
| Total Cases | 47 |
| Released from Isolation† | 44 |
| Required Hospitalization | 1 |
| Deaths | 0 |
| Maui County | |
| Total Cases | 178 |
| Released from Isolation† | 138 |
| Required Hospitalization | 26 |
| Deaths | 6 |
| HI Residents diagnosed outside of HI | 23 |
| County Pending | 0 |

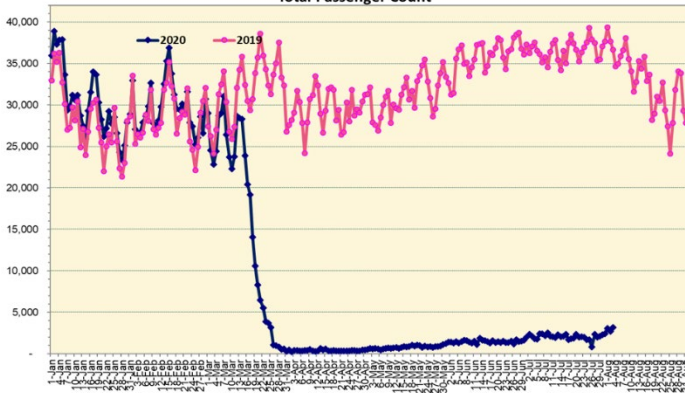
*includes presumptive and confirmed cases, data are preliminary and subject to change; note that CDC provides case counts according to states of residence.

†Isolation should be maintained until at least 3 days (72 hours) after resolution of fever and myalgia without the use of antipyretics OR at least 7 days have passed since symptom onset, whichever is longer.

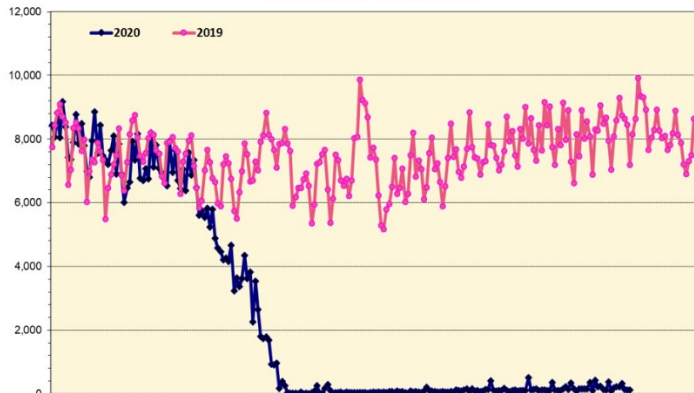
Total Passenger Count

International Passenger Count

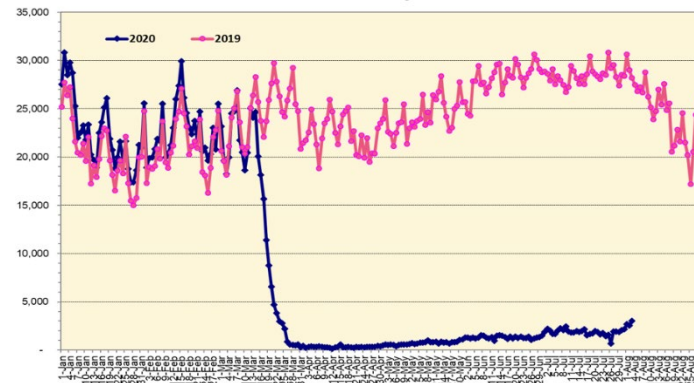
Domestic Passenger Count



Note: Excludes flights from Canada



Note: Excludes flights from Canada



Daily Passenger Count Table

| 08/03/2020 | Domestic | International | Total |
|------------------|----------|---------------|-------|
| Oahu | 2625 | 125 | 2750 |
| Maui | 241 | | 241 |
| Island of Hawaii | 97 | | 97 |
| Kauai | 51 | | 51 |
| State | 3014 | 125 | 3139 |

8/4/20 Hawaii Passenger Arrivals by Air Update

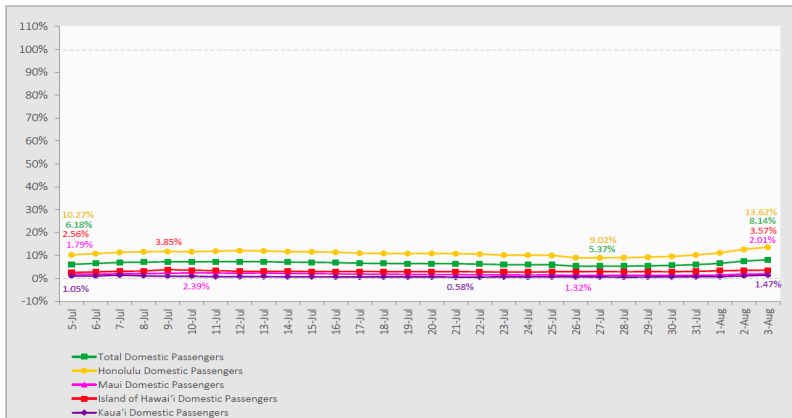
Yesterday, 3462 people arrived in Hawaii. This table shows the number of people who arrived by air from out of state yesterday and does not include interisland travel. This data was collected from the Hawaii DOT new Mandatory Travel Declaration Form.

| | Kona | Maui | Oahu | Lihue | Total |
|--------------------|------------|------------|-------------|-----------|-------------|
| Crew | 8 | 32 | 259 | 7 | 306 |
| Transit | 2 | 1 | 180 | | 183 |
| Military | | | 211 | | 211 |
| Exempt | | | 296 | | 296 |
| Relocate to Hawaii | 13 | 50 | 248 | 16 | 327 |
| Returning Resident | 51 | 124 | 987 | 19 | 1181 |
| Visitor | 44 | 70 | 828 | 16 | 958 |
| Grand Total | 118 | 277 | 3009 | 58 | 3462 |
| Flights | 4 | 4 | 26 | 1 | 35 |

Market Impact Update: <https://www.dropbox.com/08/04/20 HTA COVID19 Update>

7-Day Domestic by Island Moving Average Daily Passenger Volume

2020 Volume as Percentage of 2019 Volume
Through August 3, 2020



Source: HVCB analysis based on data from DBEDT
Note: Passenger volume figures include both visitors and residents.

Domestic by Island Month-to-Date and Year-to-Date Daily Passenger Volume

2020 Volume versus 2019 Volume
Through August 3, 2020

August 2020 (Month-to-Date through August 3)

| | 2020 | 2019 | Volume Change | Percent Change |
|-------------------|--------------|---------------|----------------|----------------|
| Honolulu | 7,079 | 44,519 | -37,440 | -84.1% |
| Maui County | 634 | 24,354 | -23,720 | -97.4% |
| Island of Hawai'i | 416 | 10,876 | -10,460 | -96.2% |
| Kaua'i | 144 | 7,790 | -7,646 | -98.2% |
| Total | 8,273 | 87,539 | -79,266 | -90.5% |

2020 (Year-to-Date through August 3)

| | 2020 | 2019 | Volume Change | Percent Change |
|-------------------|------------------|------------------|-------------------|----------------|
| Honolulu | 1,084,448 | 2,767,154 | -1,682,706 | -60.8% |
| Maui County | 449,905 | 1,354,699 | -904,794 | -66.8% |
| Island of Hawai'i | 222,618 | 622,903 | -400,285 | -64.3% |
| Kaua'i | 150,424 | 468,929 | -318,505 | -67.9% |
| Total | 1,907,395 | 5,213,685 | -3,306,290 | -63.4% |

Source: HVCB analysis based on data from DBEDT
Note: Passenger volume figures include both visitors and residents. Total includes other international passengers. 2020 includes one additional day due to Leap Year (February 29th, 2020).

News Highlights

August 4, 2020

Hawaii News Now: [Hawaii sees another single-day record of 207 new cases of COVID-19](#)

Honolulu Star-Advertiser: [Gov. David Ige highlights hurdles to welcoming back visitors to Hawaii](#)

Honolulu Star-Advertiser: [Editorial: Public needs swift help from states](#)

KHON2: [DOH director meets with Honolulu officials, beach closures could be next](#)

KHON2: [Quarantine loopholes continue as more visitors, residents enter the state](#)

KITV4: [Large weekend gatherings cause concern over enforcement of COVID-19 restrictions](#)

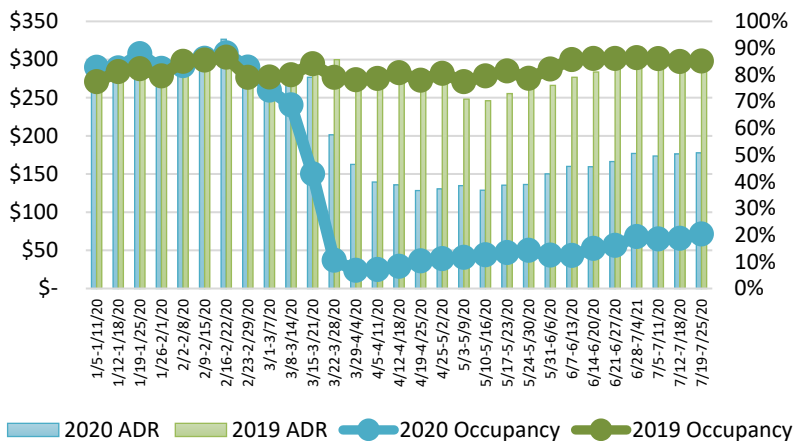
The Garden Island: [State has another record reporting day](#)

Hawaii Tribune-Herald: [Responsible tourism: County lays out five-year plan for visitors, residents](#)

Hawaii Public Radio: [Hospital CEO Warns Hawaii On Track To Exceed Health System Capacity](#)

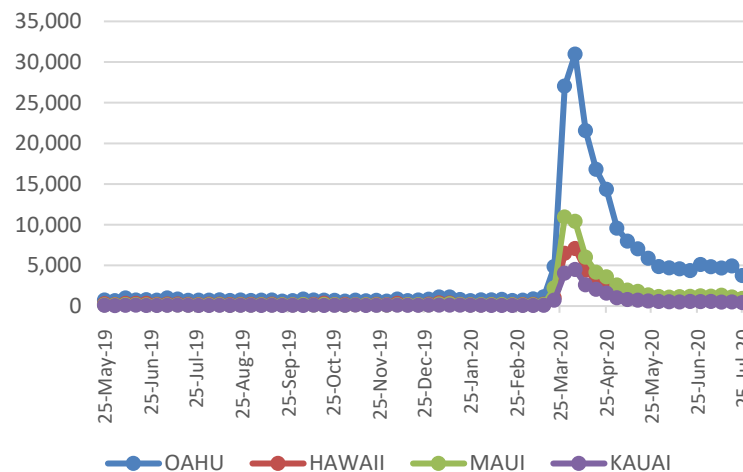
Travel Pulse: [Hawaii Governor Warns of Potential Delay of Tourism Reopening](#)

State of Hawai'i Hotel Performance by Week - 2020 vs 2019



Source: STR, Inc. © Copyright 2020 Hawai'i Tourism Authority

2020 Initial Weekly Unemployment Claims by Island



Hawaii Hotel Performance Info: For the week of July 19 – July 25, 2020

| | Occupancy | ADR | RevPAR |
|-------------------------|-----------|-----------|----------|
| State of Hawaii | 20.4% | \$ 177.72 | \$ 36.22 |
| Oahu | 22.7% | \$ 179.71 | \$ 40.85 |
| Maui County | 10.2% | \$ 210.55 | \$ 21.53 |
| Kauai County | 21.0% | \$ 192.55 | \$ 40.41 |
| Island of Hawaii | 27.9% | \$ 139.99 | \$ 39.07 |

Weekly Unemployment Initial Claims: July 25, 2020

| | |
|--|-------|
| State of Hawaii | 5,919 |
| C&C of Oahu | 3,733 |
| Hawaii County | 698 |
| Maui County | 927 |
| Kauai County | 404 |
| Agent (filed in Hawaii against another state) | 157 |

Helpful Resources
Department of Health
<https://hawaiiocovid19.com/>

Department of Health
<https://health.hawaii.gov/docd/advisories/novel-coronavirus-2019>

Dept. of Business, Economic Development & Tourism
<https://dbedt.hawaii.gov/economic/covid19/>

Department of Transportation
<https://hidot.hawaii.gov/coronavirus/>

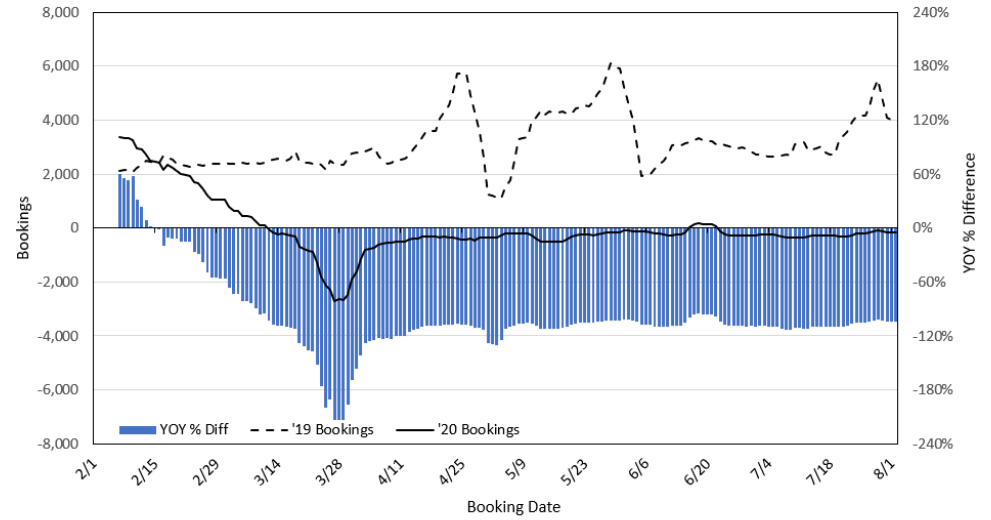
Travel Agency Bookings to Hawaii for Future Arrivals*
Based on a 7-day Moving Average, 2020 vs 2019
U.S.



*Future Arrivals refers to all arrivals that are 'future' relative to the referenced booking date.
 Source: Global Agency Pro

Update: Aug 2, 2020

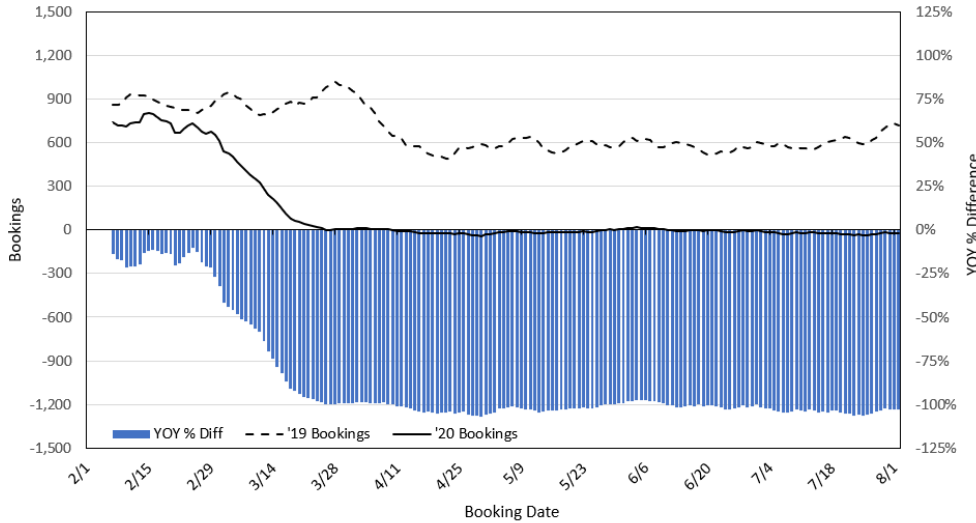
Travel Agency Bookings to Hawaii for Future Arrivals*
Based on a 7-day Moving Average, 2020 vs 2019
Japan



*Future Arrivals refers to all arrivals that are 'future' relative to the referenced booking date.
 Source: Global Agency Pro

Update: Aug 2, 2020

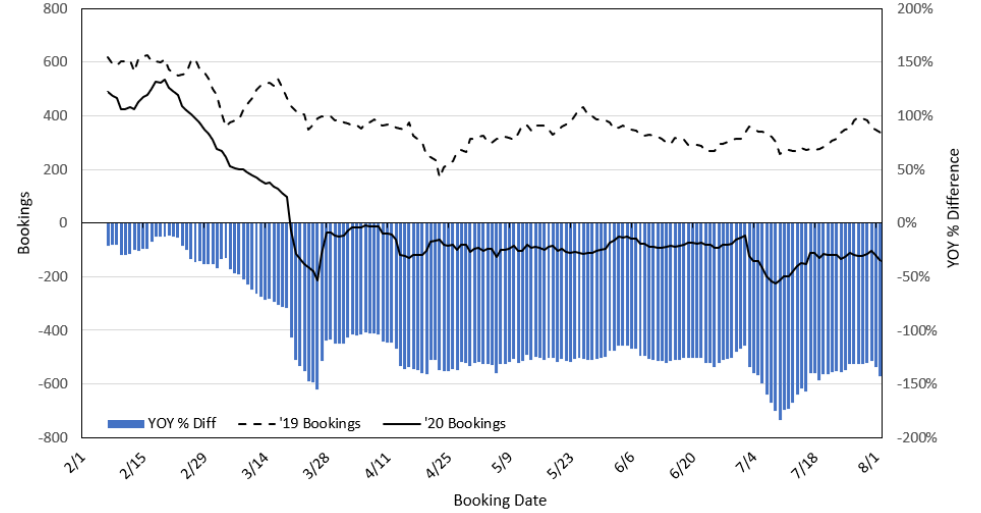
Travel Agency Bookings to Hawaii for Future Arrivals*
Based on a 7-day Moving Average, 2020 vs 2019
Canada



*Future Arrivals refers to all arrivals that are 'future' relative to the referenced booking date.
 Source: Global Agency Pro

Update: Aug 2, 2020

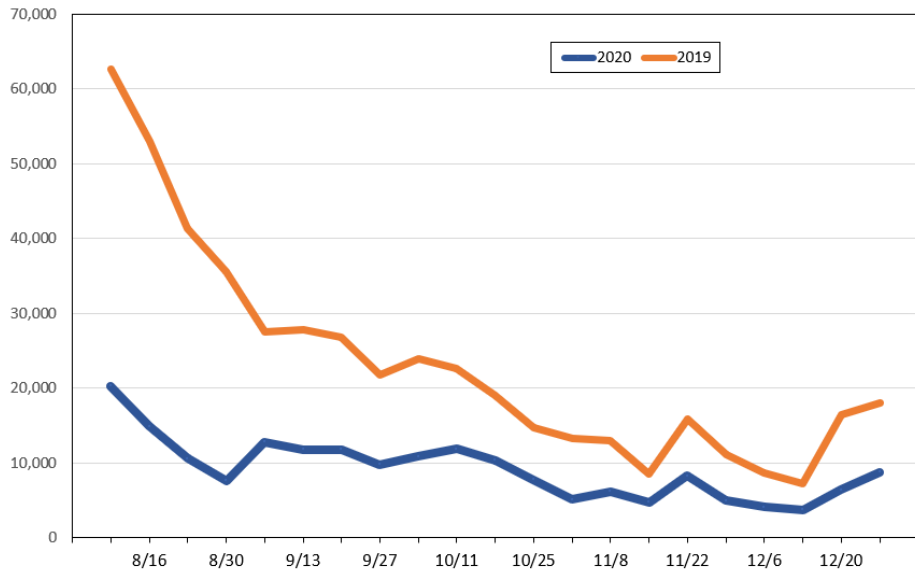
Travel Agency Bookings to Hawaii for Future Arrivals*
Based on a 7-day Moving Average, 2020 vs 2019
Australia



*Future Arrivals refers to all arrivals that are 'future' relative to the referenced booking date.
 Source: Global Agency Pro

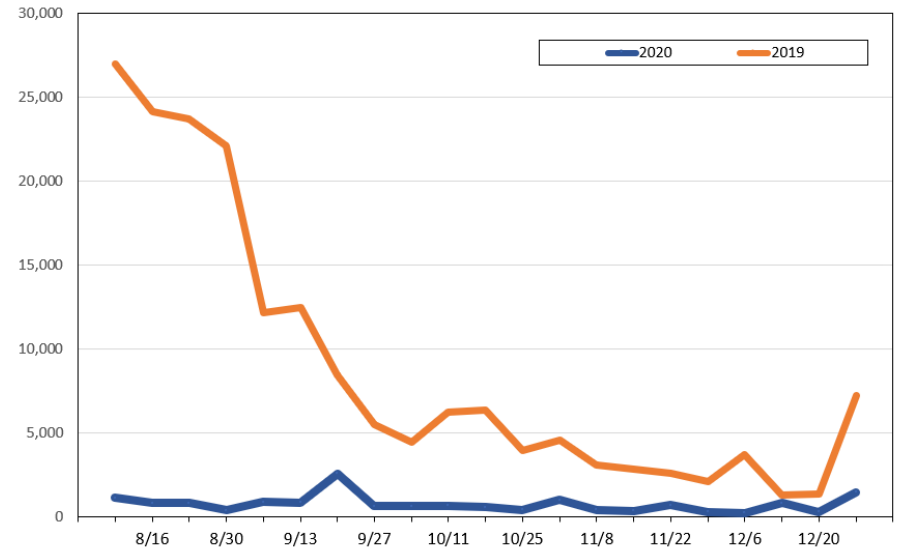
Update: Aug 2, 2020

Travel Agency Weekly Bookings for Future Travel to Hawai'i as of August 2, 2020
U.S.



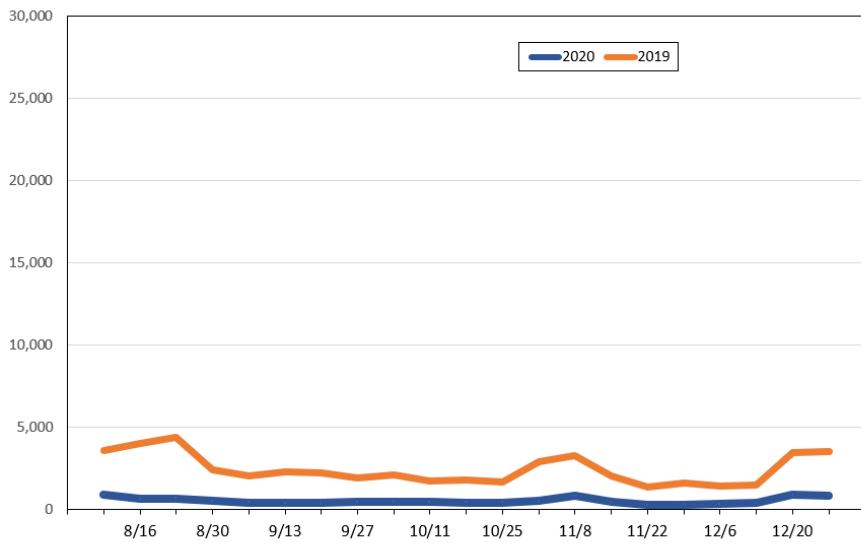
Source: Global Agency Pro, as of August 2, 2020

Travel Agency Weekly Bookings for Future Travel to Hawai'i as of August 2, 2020
Japan



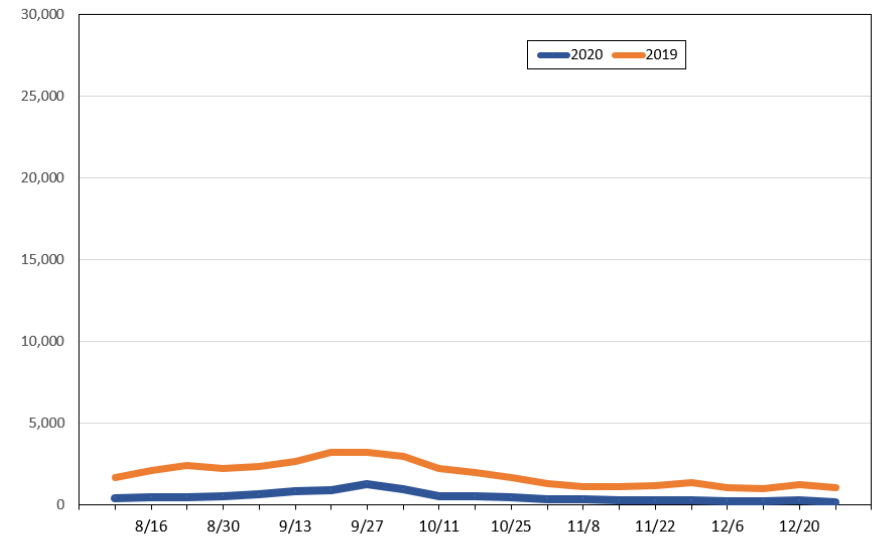
Source: Global Agency Pro, as of August 2, 2020

Travel Agency Weekly Bookings for Future Travel to Hawai'i as of August 2, 2020
Canada



Source: Global Agency Pro, as of August 2, 2020

Travel Agency Weekly Bookings for Future Travel to Hawai'i as of August 2, 2020
Australia



Source: Global Agency Pro, as of August 2, 2020