

HTA COVID-19 UPDATE

(Issued: 8/5/20 @ 4:00pm)

Novel Coronavirus in Hawaii

COVID-19 Positive* Cases

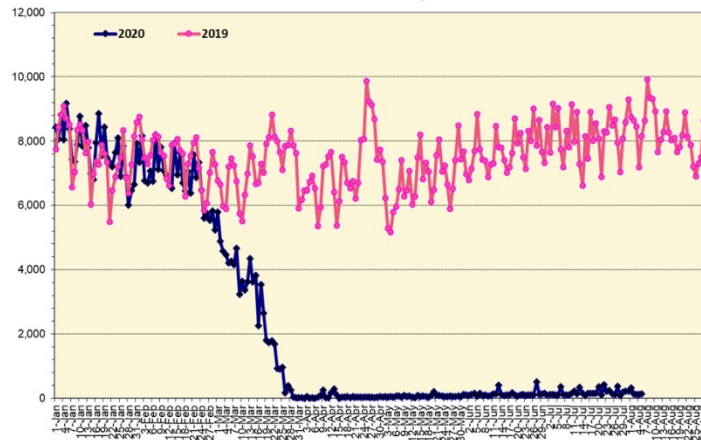
Cumulative totals as of 12:00 noon on August 5, 2020

Statewide	Total
Total Cases	2763 (173 new)
Released from Isolation†	1402
Required Hospitalization	214
Deaths	27
BY COUNTY	Total
Hawaii County	
Total Cases	122
Released from Isolation†	115
Required Hospitalization	4
Deaths	0
Honolulu County	
Total Cases	2394
Released from Isolation†	1104
Required Hospitalization	181
Deaths	20
Kauai County	
Total Cases	47
Released from Isolation†	44
Required Hospitalization	1
Deaths	0
Maui County	
Total Cases	177
Released from Isolation†	139
Required Hospitalization	26
Deaths	6
HI Residents diagnosed outside of HI	23
County Pending	0

*includes presumptive and confirmed cases, data are preliminary and subject to change; note that CDC provides case counts according to states of residence.

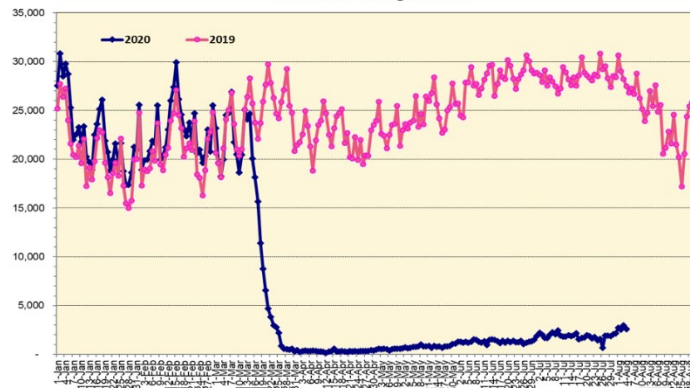
†Isolation should be maintained until at least 3 days (72 hours) after resolution of fever and myalgia without the use of antipyretics OR at least 7 days have passed since symptom onset, whichever is longer.

International Passenger Count

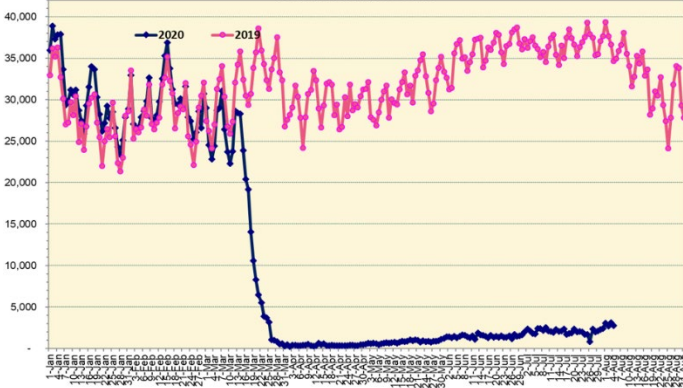


Note: Excludes flights from Canada

Domestic Passenger Count



Total Passenger Count



Note: Excludes flights from Canada

Daily Passenger Count Table

08/04/2020	Domestic	International	Total
Oahu	2148	119	2267
Maui	242		242
Island of Hawaii	226		226
Kauai	0		0
State	2616	119	2735

8/5/20 Hawaii Passenger Arrivals by Air Update

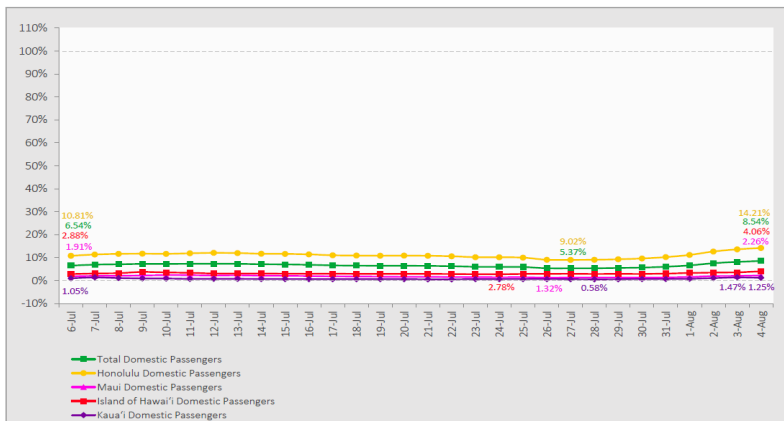
Yesterday, 3029 people arrived in Hawaii. This table shows the number of people who arrived by air from out of state yesterday and does not include interisland travel. This data was collected from the Hawaii DOT new Mandatory Travel Declaration Form.

	Kona	Maui	Oahu	Lihue	Total
Crew	13	24	246		283
Transit	3		194		197
Military			146		146
Exempt			155		155
Relocate to Hawaii	54	31	262		347
Returning Resident	94	104	781		979
Visitor	86	107	729		922
Grand Total	250	266	2513	0	3029
Flights	5	4	25	0	34

Market Impact Update: <https://www.dropbox.com/08/05/20 HTA COVID19 Update>

7-Day Domestic by Island Moving Average Daily Passenger Volume

2020 Volume as Percentage of 2019 Volume
Through August 4, 2020



Source: HVCB analysis based on data from DBEDT
Note: Passenger volume figures include both visitors and residents.

Domestic by Island Month-to-Date and Year-to-Date Daily Passenger Volume

2020 Volume versus 2019 Volume
Through August 4, 2020

August 2020 (Month-to-Date through August 4)

	2020	2019	Volume Change	Percent Change
Honolulu	9,227	60,114	-50,887	-84.7%
Maui County	897	31,929	-31,032	-97.2%
Island of Hawai'i	642	14,432	-13,790	-95.6%
Kaua'i	144	10,077	-9,933	-98.6%
Total	10,910	116,552	-105,642	-90.6%

2020 (Year-to-Date through August 4)

	2020	2019	Volume Change	Percent Change
Honolulu	1,086,596	2,782,749	-1,696,153	-61.0%
Maui County	450,179	1,362,274	-912,095	-67.0%
Island of Hawai'i	222,844	626,459	-403,615	-64.4%
Kaua'i	150,424	471,216	-320,792	-68.1%
Total	1,910,043	5,242,698	-3,332,655	-63.6%

Source: HVCB analysis based on data from DBEDT
Note: Passenger volume figures include both visitors and residents. Total includes other international passengers. 2020 includes one additional day due to Leap Year (February 29th, 2020).

News Highlights

August 5, 2020

Honolulu Star-Advertiser:

[Hawaii's vacation rentals hard hit in June by lockdowns and low travel demand](#)

KHON2: [Mayor Caldwell cracking down on open bars in Honolulu](#)

KITV4: [Lt. Governor Josh Green says another lockdown is imminent](#)

KITV4: [Kauai County creates Mahalo Green Card Placard program to differentiate between travelers and those subject to quarantine](#)

KITV4: [Less than 16% of Hawaii's hotels were occupied in June, HTA reports](#)

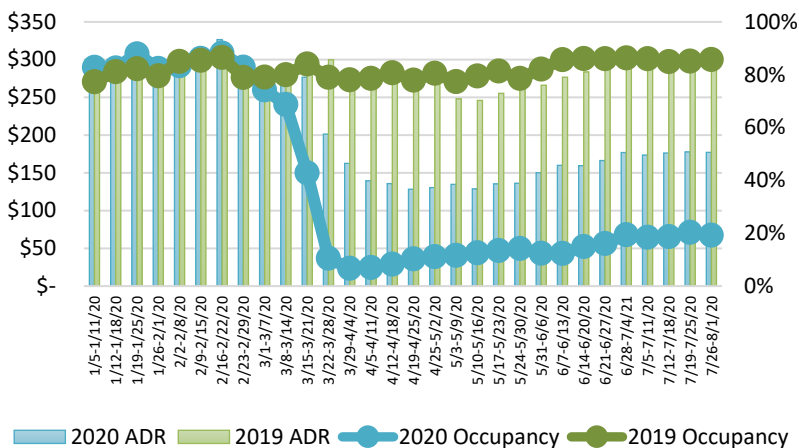
Honolulu Civil Beat: [Visitor Industry Must Step Up If They Want More Visitors](#)

The Garden Island: [State has another record reporting day](#)

The Garden Island: [Potential resort bubble idea has governor support](#)

CTV News: [Aloha! Canadians will soon be able to visit Hawaii without having to quarantine](#)

State of Hawai'i Hotel Performance by Week - 2020 vs 2019



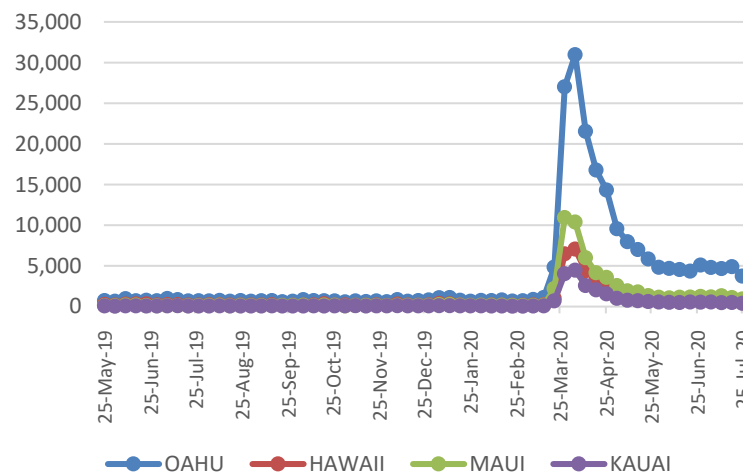
Source: STR, Inc. © Copyright 2020 Hawai'i Tourism Authority

Hawaii Hotel Performance Info:

For the week of July 26 – August 1, 2020

	Occupancy	ADR	RevPAR
State of Hawaii	19.3%	\$ 177.17	\$ 34.17
Oahu	21.4%	\$ 173.13	\$ 37.10
Maui County	9.0%	\$ 233.50	\$ 21.09
Kauai County	22.2%	\$ 197.28	\$ 43.76
Island of Hawaii	26.1%	\$ 142.36	\$ 37.22

2020 Initial Weekly Unemployment Claims by Island



Weekly Unemployment Initial Claims: July 25, 2020

State of Hawaii	5,919
C&C of Oahu	3,733
Hawaii County	698
Maui County	927
Kauai County	404
Agent (filed in Hawaii against another state)	157

Helpful Resources

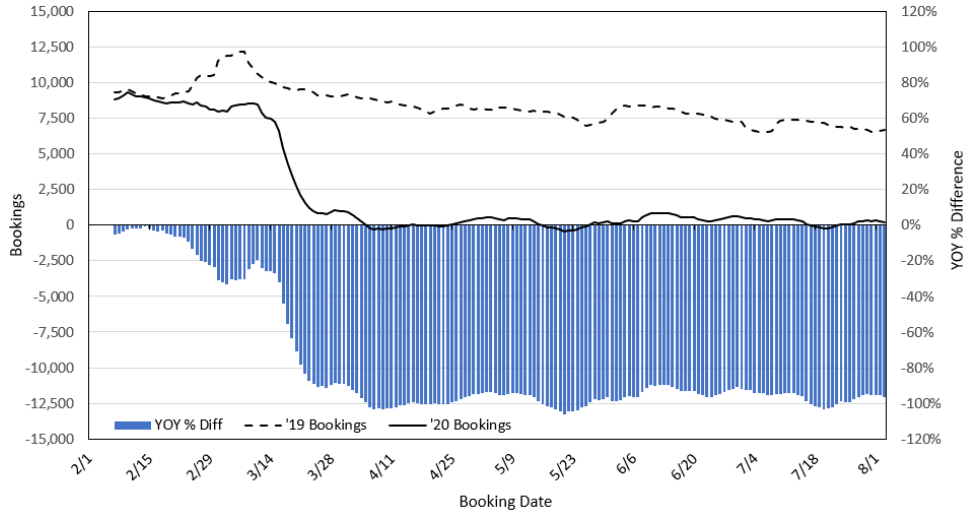
Department of Health
<https://hawaiicovid19.com/>

Department of Health
<https://health.hawaii.gov/dacd/advisories/novel-coronavirus-2019>

Dept. of Business, Economic Development & Tourism
<https://dbedt.hawaii.gov/economic/covid19/>

Department of Transportation
<https://hidot.hawaii.gov/coronavirus/>

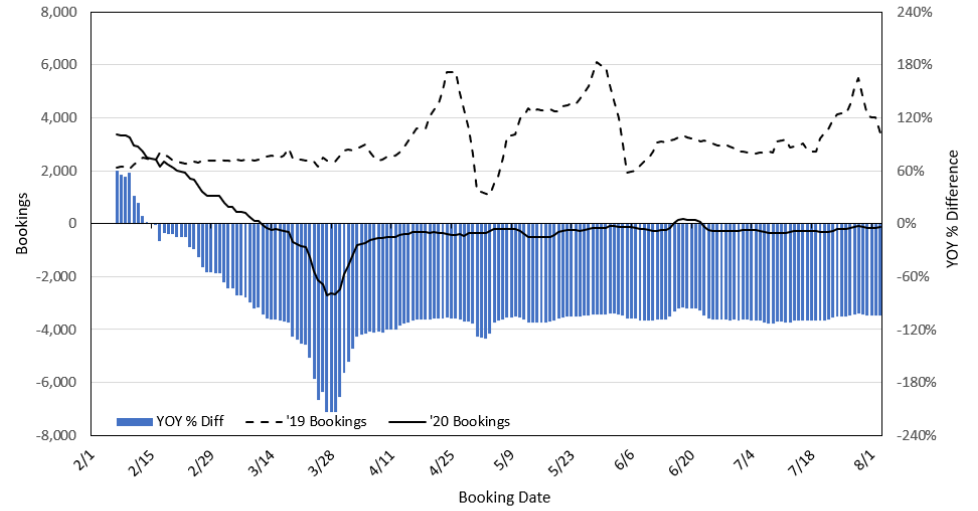
Travel Agency Bookings to Hawaii for Future Arrivals*
Based on a 7-day Moving Average, 2020 vs 2019
U.S.



*Future Arrivals refers to all arrivals that are 'future' relative to the referenced booking date.
 Source: Global Agency Pro

Update: Aug 3, 2020

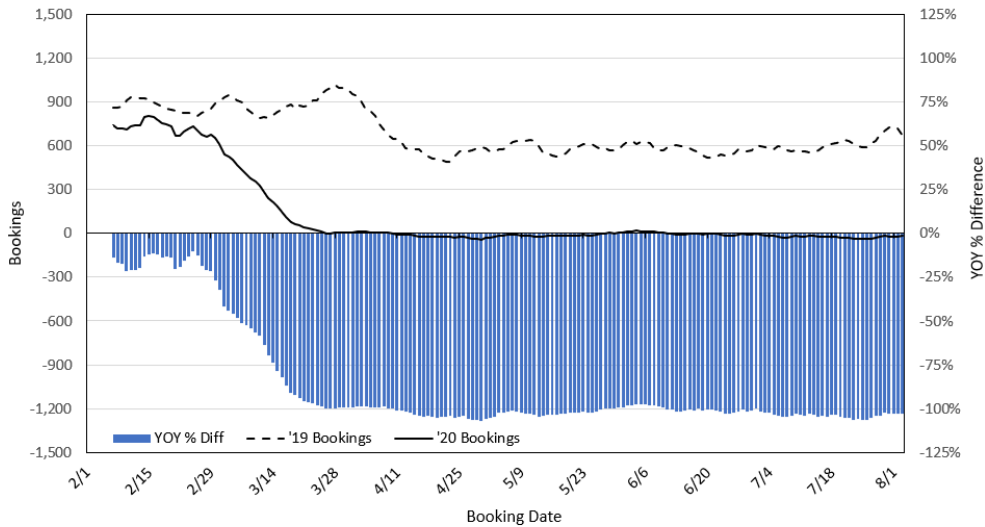
Travel Agency Bookings to Hawaii for Future Arrivals*
Based on a 7-day Moving Average, 2020 vs 2019
Japan



*Future Arrivals refers to all arrivals that are 'future' relative to the referenced booking date.
 Source: Global Agency Pro

Update: Aug 3, 2020

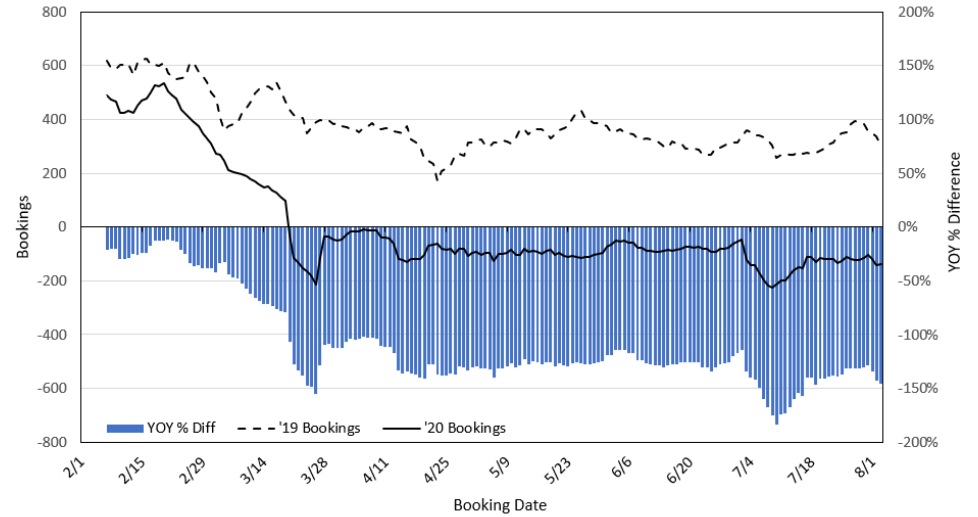
Travel Agency Bookings to Hawaii for Future Arrivals*
Based on a 7-day Moving Average, 2020 vs 2019
Canada



*Future Arrivals refers to all arrivals that are 'future' relative to the referenced booking date.
 Source: Global Agency Pro

Update: Aug 3, 2020

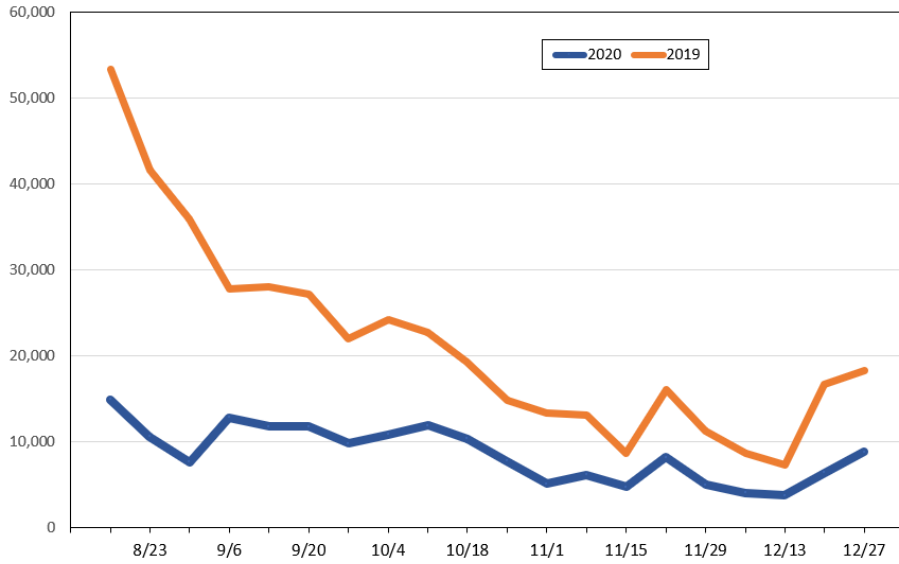
Travel Agency Bookings to Hawaii for Future Arrivals*
Based on a 7-day Moving Average, 2020 vs 2019
Australia



*Future Arrivals refers to all arrivals that are 'future' relative to the referenced booking date.
 Source: Global Agency Pro

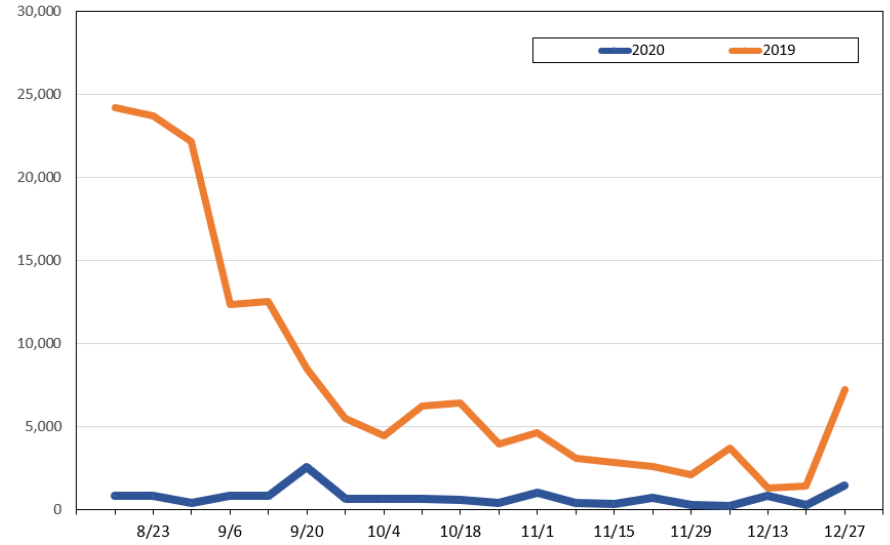
Update: Aug 3, 2020

Travel Agency Weekly Bookings for Future Travel to Hawai'i as of August 3, 2020
U.S.



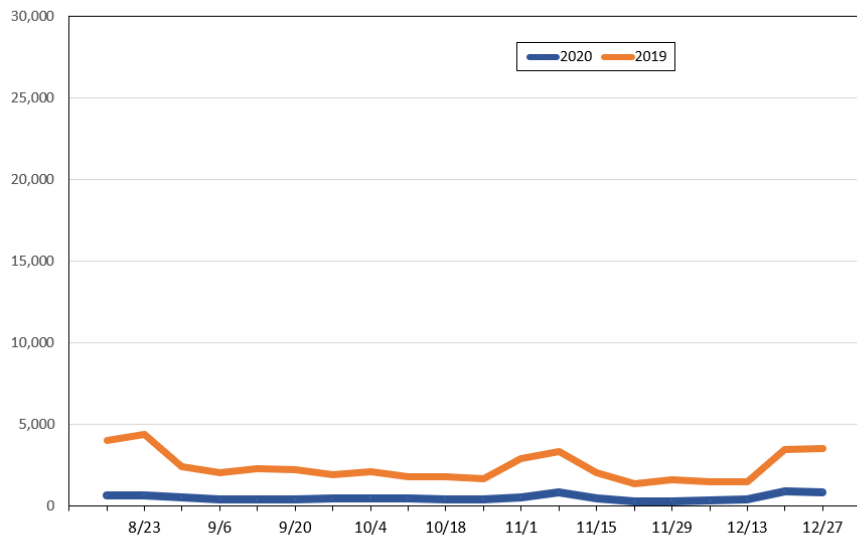
Source: Global Agency Pro, as of August 3, 2020

Travel Agency Weekly Bookings for Future Travel to Hawai'i as of August 3, 2020
Japan



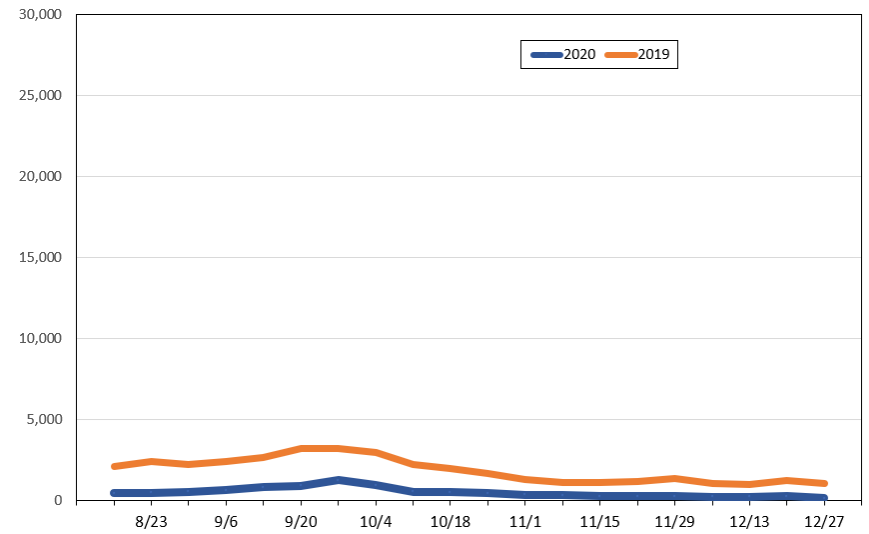
Source: Global Agency Pro, as of August 3, 2020

Travel Agency Weekly Bookings for Future Travel to Hawai'i as of August 3, 2020
Canada



Source: Global Agency Pro, as of August 3, 2020

Travel Agency Weekly Bookings for Future Travel to Hawai'i as of August 3, 2020
Australia



Source: Global Agency Pro, as of August 3, 2020