

HTA COVID-19 UPDATE

(Issued: 8/6/20 @ 4:00pm)

Novel Coronavirus in Hawaii

COVID-19 Positive* Cases

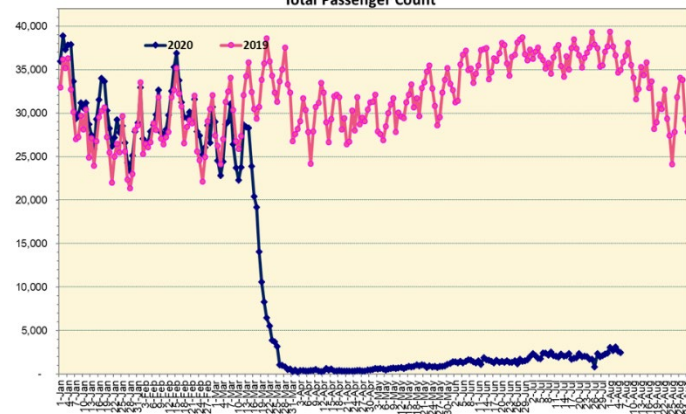
Cumulative totals as of 12:00 noon on August 6, 2020

Statewide	Total
Total Cases	2815 (53 new)
Released from Isolation†	1433
Required Hospitalization	223
Deaths	29
BY COUNTY	Total
Hawaii County	
Total Cases	122
Released from Isolation†	115
Required Hospitalization	4
Deaths	0
Honolulu County	
Total Cases	2445
Released from Isolation†	1130
Required Hospitalization	190
Deaths	22
Kauai County	
Total Cases	47
Released from Isolation†	46
Required Hospitalization	1
Deaths	0
Maui County	
Total Cases	178
Released from Isolation†	142
Required Hospitalization	26
Deaths	6
HI Residents diagnosed outside of HI	23
County Pending	0

*includes presumptive and confirmed cases, data are preliminary and subject to change; note that CDC provides case counts according to states of residence.

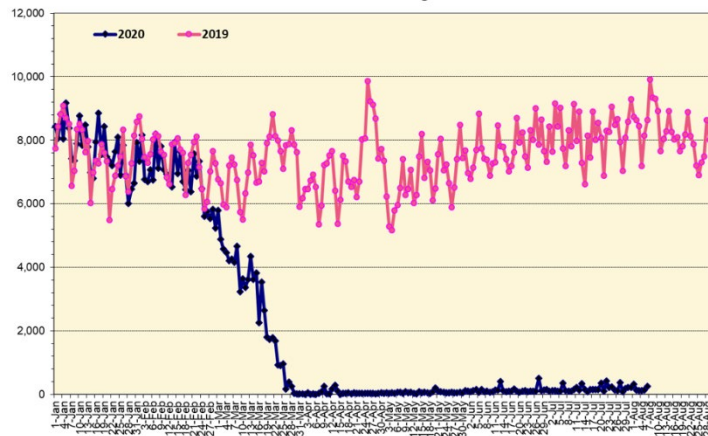
†Isolation should be maintained until at least 3 days (72 hours) after resolution of fever and myalgia without the use of antipyretics OR at least 7 days have passed since symptom onset, whichever is longer.

Total Passenger Count



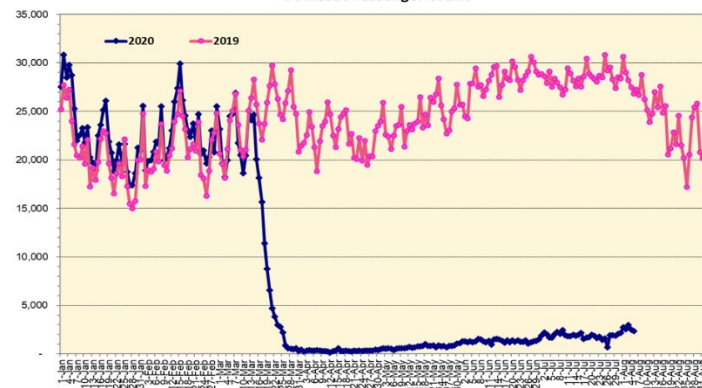
Note: Excludes flights from Canada

International Passenger Count



Note: Excludes flights from Canada

Domestic Passenger Count



Daily Passenger Count Table

08/05/2020	Domestic	International	Total
Oahu	2092	135	2227
Maui	143		143
Island of Hawaii	108		108
Kauai	0		0
State	2343	135	2478

8/6/20 Hawaii Passenger Arrivals by Air Update

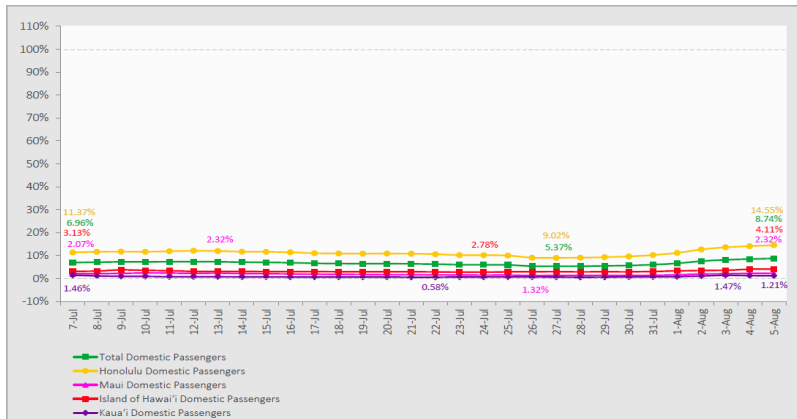
Yesterday, 2910 people arrived in Hawaii. This table shows the number of people who arrived by air from out of state yesterday and does not include interisland travel. This data was collected from the Hawaii DOT new Mandatory Travel Declaration Form.

	Kona	Maui	Oahu	Lihue	Total
Crew	12	25	250		287
Transit	3	2	202		207
Military			202		202
Exempt			239		239
Relocate to Hawaii	21	20	279		320
Returning Resident	48	79	812		939
Visitor	42	42	632		716
Grand Total	126	168	2616	0	2910
Flights	5	4	23	0	32

Market Impact Update: <https://www.dropbox.com/08/06/20 HTA COVID19 Update>

7-Day Domestic by Island Moving Average Daily Passenger Volume

2020 Volume as Percentage of 2019 Volume
Through August 5, 2020



Source: HVCB analysis based on data from DBEDT
Note: Passenger volume figures include both visitors and residents.

Domestic by Island Month-to-Date and Year-to-Date Daily Passenger Volume

2020 Volume versus 2019 Volume
Through August 5, 2020

August 2020 (Month-to-Date through August 5)

	2020	2019	Volume Change	Percent Change
Honolulu	11,222	74,649	-63,427	-85.0%
Maui County	1,040	39,831	-38,791	-97.4%
Island of Hawai'i	750	17,846	-17,096	-95.8%
Kaua'i	144	12,417	-12,273	-98.8%
Total	13,156	144,743	-131,587	-90.9%

2020 (Year-to-Date through August 5)

	2020	2019	Volume Change	Percent Change
Honolulu	1,088,591	2,797,284	-1,708,693	-61.1%
Maui County	450,322	1,370,176	-919,854	-67.1%
Island of Hawai'i	222,952	629,873	-406,921	-64.6%
Kaua'i	150,424	473,556	-323,132	-68.2%
Total	1,912,289	5,270,889	-3,358,600	-63.7%

Source: HVCB analysis based on data from DBEDT
Note: Passenger volume figures include both visitors and residents. Total includes other international passengers. 2020 includes one additional day due to Leap Year (February 29th, 2020).

News Highlights

August 6, 2020

Hawaii News Now: [Parks and beaches to close, inter-island traveler quarantine reinstated amid COVID-19 surge](#)

Hawaii News Now: [Neighbor Island mayors to governor: Reinstating inter-island quarantine, keep schools closed](#)

Hawaii News Now: [Civil Beat-HNN poll: Most voters aren't happy with state's plans to reopen schools, tourism](#)

KHON2: [Kauai man arrested for allegedly breaking quarantine at a Kauai hotel](#)

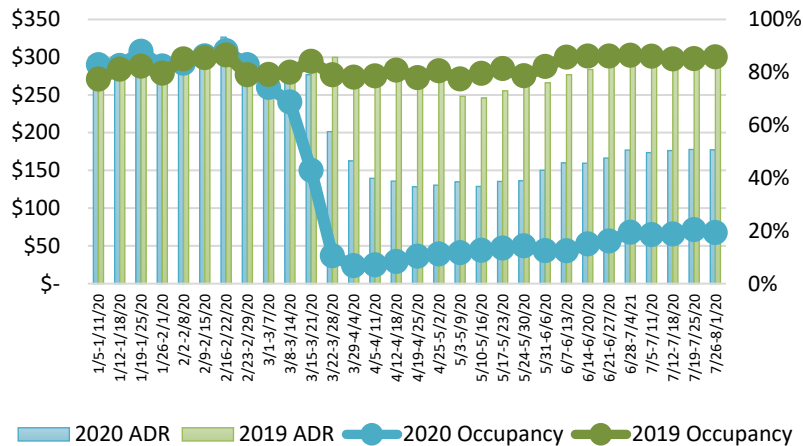
KHON2: [August 4: 3,029 passengers, 34 flights arrive in Hawaii](#)

Hawaii Public Radio: [The Latest: 173 New Cases; Mayor Warns Of 'Drastic' Actions If Trend Continues](#)

The Garden Island: [Inter-island quarantine requested](#)

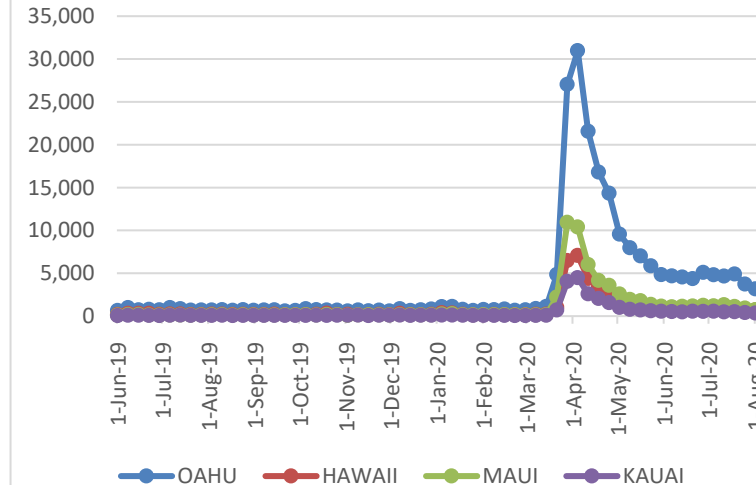
The Garden Island: [More than \\$100k released for COVID-19 relief](#)

State of Hawai'i Hotel Performance by Week - 2020 vs 2019



Source: STR, Inc. © Copyright 2020 Hawai'i Tourism Authority

2020 Initial Weekly Unemployment Claims by Island



Hawaii Hotel Performance Info: For the week of July 26 – August 1, 2020

	Occupancy	ADR	RevPAR
State of Hawaii	19.3%	\$ 177.17	\$ 34.17
Oahu	21.4%	\$ 173.13	\$ 37.10
Maui County	9.0%	\$ 233.50	\$ 21.09
Kauai County	22.2%	\$ 197.28	\$ 43.76
Island of Hawaii	26.1%	\$ 142.36	\$ 37.22

Weekly Unemployment Initial Claims: August 1, 2020

State of Hawaii	5,069
C&C of Oahu	3,166
Hawaii County	703
Maui County	734
Kauai County	339
Agent (filed in Hawaii against another state)	127

Helpful Resources

Department of Health
<https://hawaiicovid19.com/>

Department of Health
<https://health.hawaii.gov/dacd/advisories/novel-coronavirus-2019>

Dept. of Business, Economic Development & Tourism
<https://dbedt.hawaii.gov/economic/covid19/>

Department of Transportation
<https://hidot.hawaii.gov/coronavirus/>

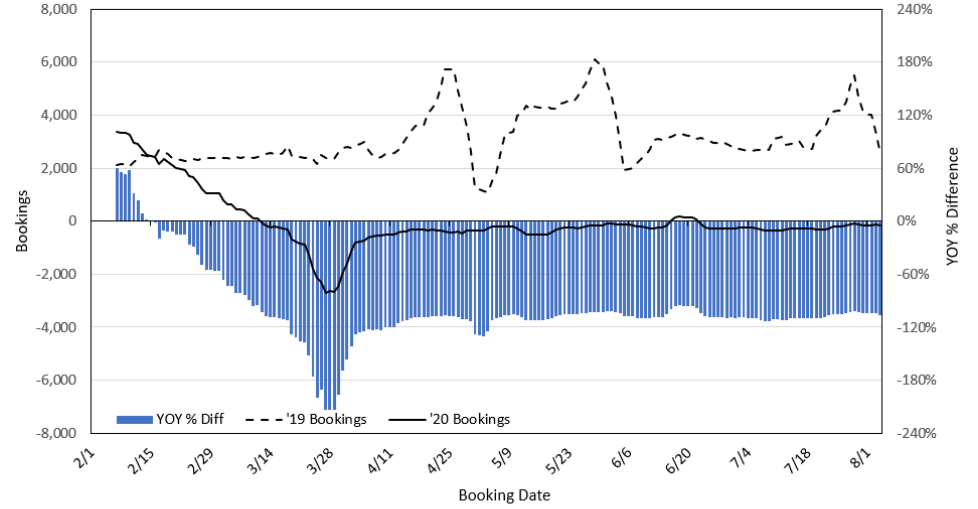
Travel Agency Bookings to Hawaii for Future Arrivals*
Based on a 7-day Moving Average, 2020 vs 2019
U.S.



*Future Arrivals refers to all arrivals that are 'future' relative to the referenced booking date.
 Source: Global Agency Pro

Update: Aug 4, 2020

Travel Agency Bookings to Hawaii for Future Arrivals*
Based on a 7-day Moving Average, 2020 vs 2019
Japan



*Future Arrivals refers to all arrivals that are 'future' relative to the referenced booking date.
 Source: Global Agency Pro

Update: Aug 4, 2020

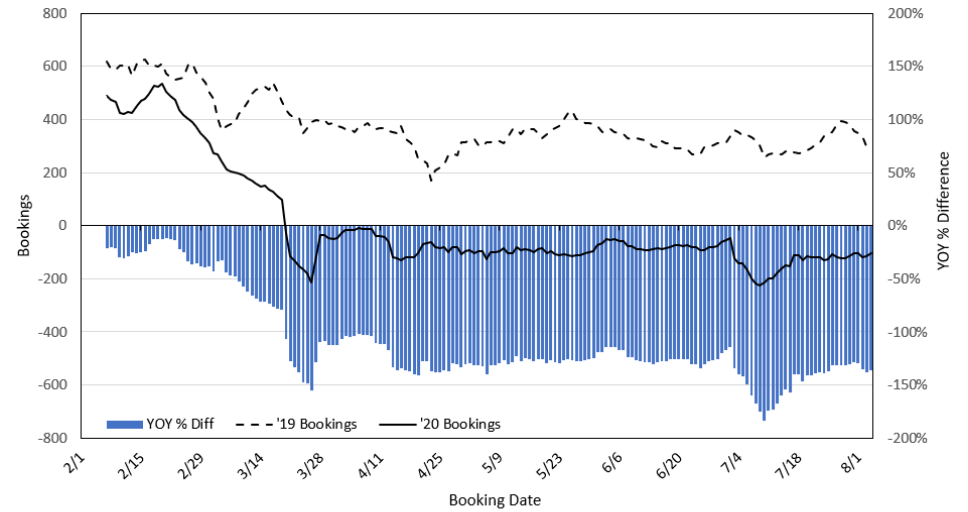
Travel Agency Bookings to Hawaii for Future Arrivals*
Based on a 7-day Moving Average, 2020 vs 2019
Canada



*Future Arrivals refers to all arrivals that are 'future' relative to the referenced booking date.
 Source: Global Agency Pro

Update: Aug 4, 2020

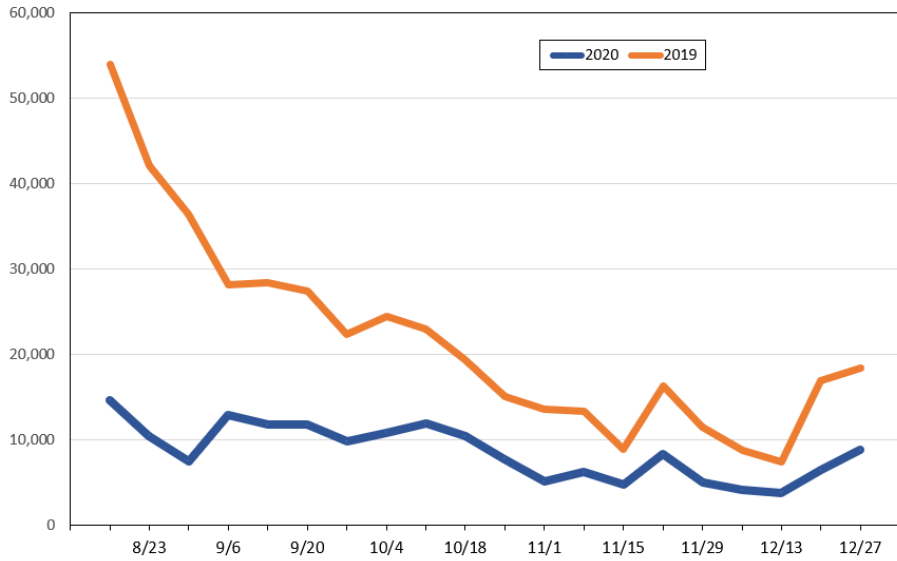
Travel Agency Bookings to Hawaii for Future Arrivals*
Based on a 7-day Moving Average, 2020 vs 2019
Australia



*Future Arrivals refers to all arrivals that are 'future' relative to the referenced booking date.
 Source: Global Agency Pro

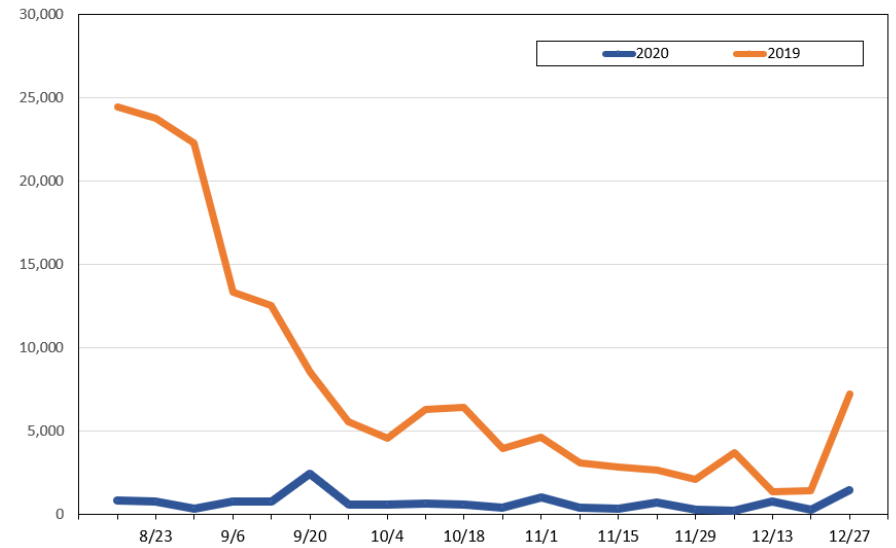
Update: Aug 4, 2020

**Travel Agency Weekly Bookings for Future Travel to Hawai'i as of August 4, 2020
U.S.**



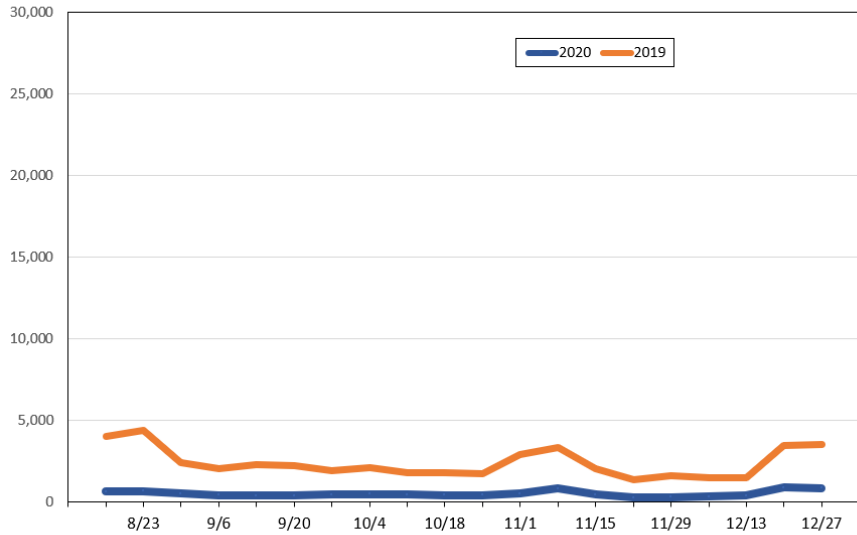
Source: Global Agency Pro, as of August 4, 2020

**Travel Agency Weekly Bookings for Future Travel to Hawai'i as of August 4, 2020
Japan**



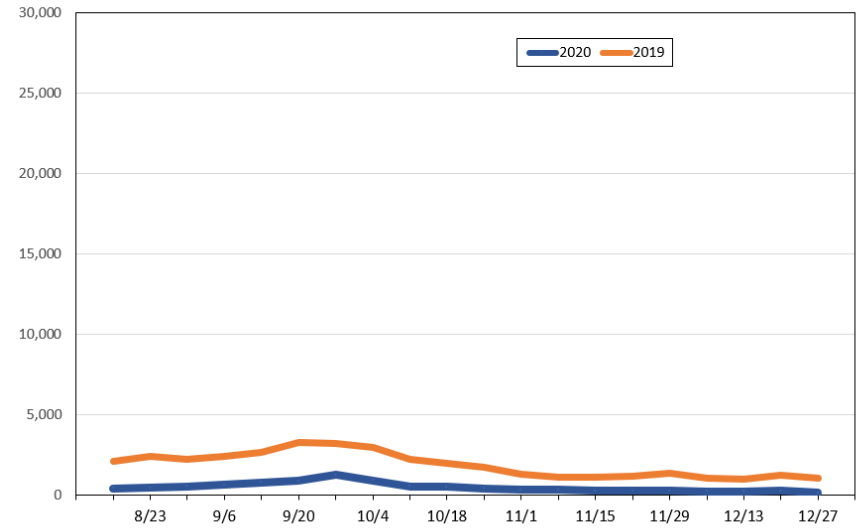
Source: Global Agency Pro, as of August 4, 2020

**Travel Agency Weekly Bookings for Future Travel to Hawai'i as of August 4, 2020
Canada**



Source: Global Agency Pro, as of August 4, 2020

**Travel Agency Weekly Bookings for Future Travel to Hawai'i as of August 4, 2020
Australia**



Source: Global Agency Pro, as of August 4, 2020