

# HTA COVID-19 UPDATE

(Issued: 8/7/20 @ 4:00pm)

## Novel Coronavirus in Hawaii

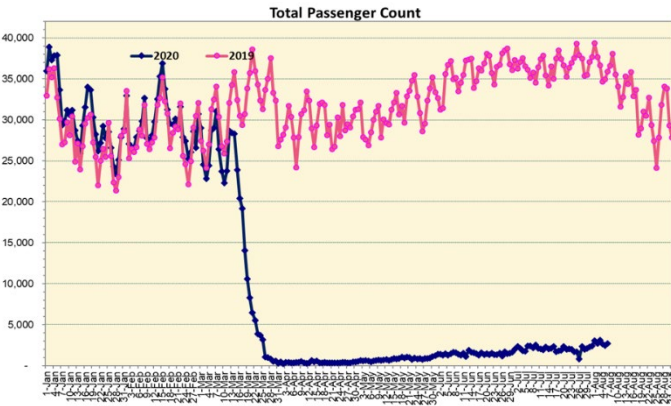
COVID-19 Positive\* Cases

Cumulative totals as of 12:00 noon on August 7, 2020

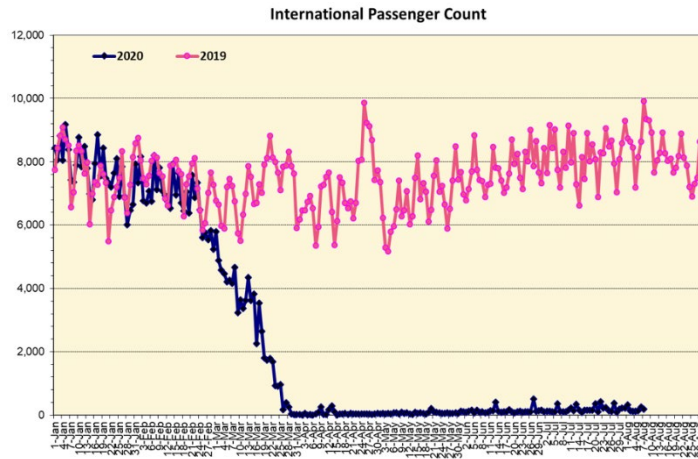
Statewide	Total
Total Cases	<b>3115</b> (201 new)
Released from Isolation†	1467
Required Hospitalization	231
Deaths	31
BY COUNTY	Total
Hawaii County	
Total Cases	123
Released from Isolation†	115
Required Hospitalization	4
Deaths	0
Honolulu County	
Total Cases	2741
Released from Isolation†	1161
Required Hospitalization	198
Deaths	24
Kauai County	
Total Cases	47
Released from Isolation†	46
Required Hospitalization	1
Deaths	0
Maui County	
Total Cases	181
Released from Isolation†	145
Required Hospitalization	26
Deaths	6
HI Residents diagnosed outside of HI	23
County Pending	0

\*includes presumptive and confirmed cases, data are preliminary and subject to change; note that CDC provides case counts according to states of residence.

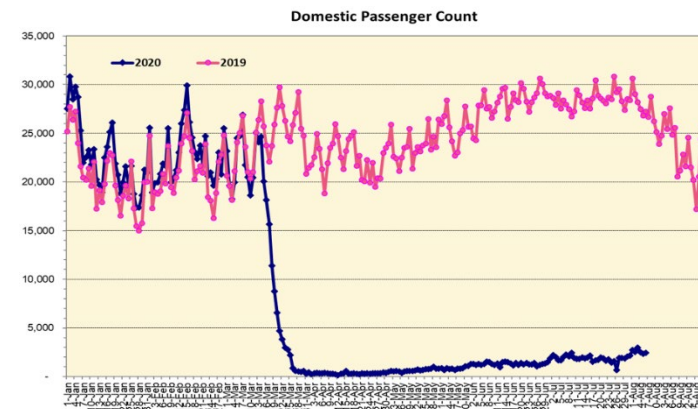
†Isolation should be maintained until at least 3 days (72 hours) after resolution of fever and myalgia without the use of antipyretics OR at least 7 days have passed since symptom onset, whichever is longer.



Note: Excludes flights from Canada



Note: Excludes flights from Canada



### Daily Passenger Count Table

08/06/2020	Domestic	International	Total
Oahu	2014	250	2264
Maui	165		165
Island of Hawaii	209		209
Kauai	65		65
State	2453	250	2703

### 8/7/20 Hawaii Passenger Arrivals by Air Update

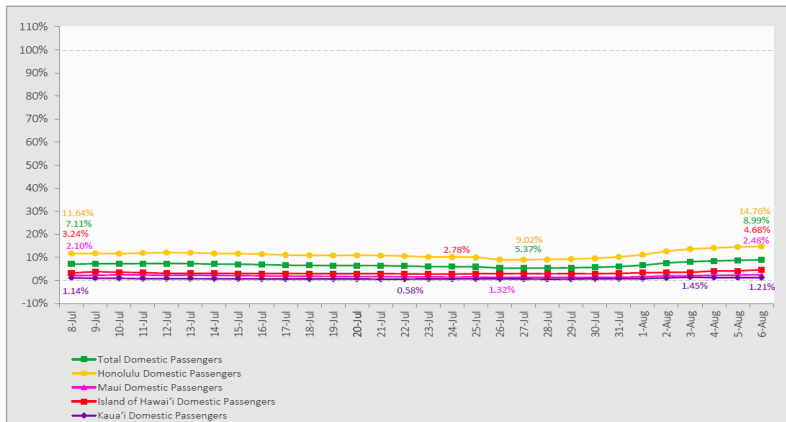
Yesterday, 3064 people arrived in Hawaii. This table shows the number of people who arrived by air from out of state yesterday and does not include interisland travel. This data was collected from the Hawaii DOT new Mandatory Travel Declaration Form.

	Kona	Maui	Oahu	Lihue	Total
Crew	21	26	332	10	389
Transit		1	208		209
Military			239		239
Exempt			143		143
Relocate to Hawaii	38	14	206	20	278
Returning Resident	83	87	731	12	913
Visitor	89	63	714	27	893
<b>Grand Total</b>	<b>231</b>	<b>191</b>	<b>2573</b>	<b>69</b>	<b>3064</b>
<b>Flights</b>	<b>5</b>	<b>4</b>	<b>30</b>	<b>2</b>	<b>41</b>

Market Impact Update: <https://www.dropbox.com/08/07/20 HTA COVID19 Update>

### 7-Day Domestic by Island Moving Average Daily Passenger Volume

2020 Volume as Percentage of 2019 Volume  
Through August 6, 2020



Source: HVCB analysis based on data from DBEDT  
Note: Passenger volume figures include both visitors and residents.

### Domestic by Island Month-to-Date and Year-to-Date Daily Passenger Volume

2020 Volume versus 2019 Volume  
Through August 6, 2020

August 2020 (Month-to-Date through August 6)

	2020	2019	Volume Change	Percent Change
Honolulu	13,236	88,660	-75,424	-85.1%
Maui County	1,205	47,566	-46,361	-97.5%
Island of Hawai'i	961	21,124	-20,163	-95.5%
Kaua'i	205	14,880	-14,675	-98.6%
<b>Total</b>	<b>15,607</b>	<b>172,230</b>	<b>-156,623</b>	<b>-90.9%</b>

2020 (Year-to-Date through August 6)

	2020	2019	Volume Change	Percent Change
Honolulu	1,090,605	2,811,295	-1,720,690	-61.2%
Maui County	450,487	1,377,911	-927,424	-67.3%
Island of Hawai'i	223,163	633,151	-409,988	-64.8%
Kaua'i	150,485	476,019	-325,534	-68.4%
<b>Total</b>	<b>1,914,740</b>	<b>5,298,376</b>	<b>-3,383,636</b>	<b>-63.9%</b>

Source: HVCB analysis based on data from DBEDT  
Note: Passenger volume figures include both visitors and residents. Total includes other international passengers. 2020 includes one additional day due to Leap Year (February 29th, 2020).

## News Highlights

August 7, 2020

**Honolulu Star-Advertiser:** [14-day interisland quarantine returns](#)

**Hawaii News Now:** [The new inter-island quarantine rules, explained](#)

**KHON2:** [State Parks on Oahu to Close at Midnight on Friday](#)

**KHON2:** [August 5: 2,910 passengers, 32 flights arrive in Hawaii](#)

**KHON2:** [‘Doesn’t seem fair’: Bowling alleys, mini-golf and arcades to close for a month on Oahu under mayor’s order](#)

**KHON2:** [Hawaii wedding industry struggling during the pandemic](#)

**The Garden Island:** [Interisland quarantine coming back](#)

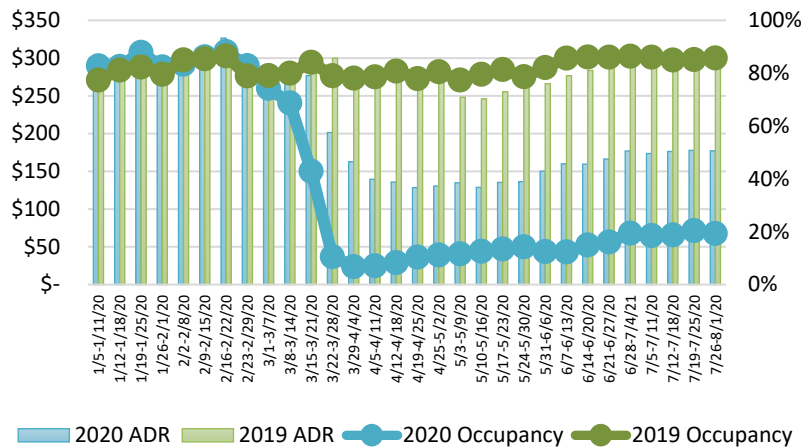
**The Garden Island:** [State has paid \\$2.6B in jobless claims](#)

**The New York Times:** [Should I Quarantine After Traveling Outside California?](#)

**Travel Weekly:** [State Department lifts one-size-fits-all Covid warning on foreign travel](#)

**CNN:** [Hawaii reinstates inter-island travel quarantine and other restrictions as Covid-19 cases surge](#)

### State of Hawai'i Hotel Performance by Week - 2020 vs 2019



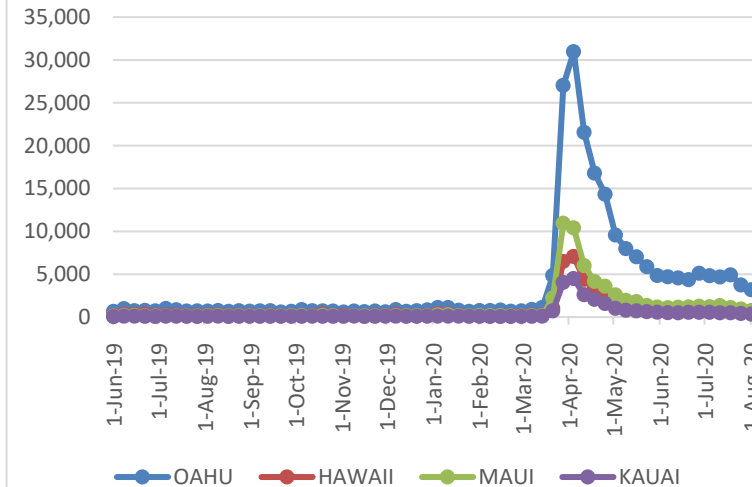
Source: STR, Inc. © Copyright 2020 Hawai'i Tourism Authority

### Hawaii Hotel Performance Info:

For the week of July 26 – August 1, 2020

	Occupancy	ADR	RevPAR
<b>State of Hawaii</b>	19.3%	\$ 177.17	\$ 34.17
<b>Oahu</b>	21.4%	\$ 173.13	\$ 37.10
<b>Maui County</b>	9.0%	\$ 233.50	\$ 21.09
<b>Kauai County</b>	22.2%	\$ 197.28	\$ 43.76
<b>Island of Hawaii</b>	26.1%	\$ 142.36	\$ 37.22

### 2020 Initial Weekly Unemployment Claims by Island



### Weekly Unemployment Initial Claims: August 1, 2020

<b>State of Hawaii</b>	5,069
<b>C&amp;C of Oahu</b>	3,166
<b>Hawaii County</b>	703
<b>Maui County</b>	734
<b>Kauai County</b>	339
<b>Agent (filed in Hawaii against another state)</b>	127

#### Helpful Resources

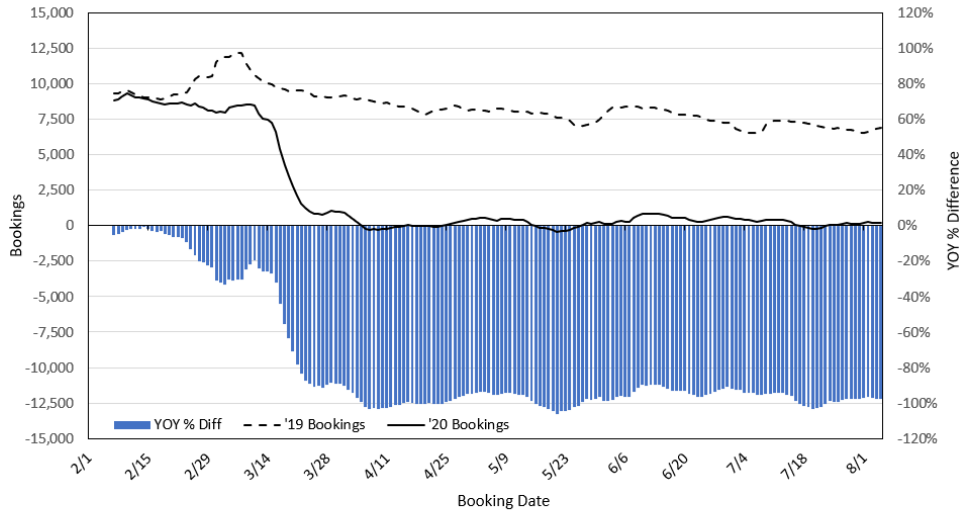
**Department of Health**  
<https://hawaiicovid19.com/>

**Department of Health**  
<https://health.hawaii.gov/dacd/advisories/novel-coronavirus-2019>

**Dept. of Business, Economic Development & Tourism**  
<https://dbedt.hawaii.gov/economic/covid19/>

**Department of Transportation**  
<https://hidot.hawaii.gov/coronavirus/>

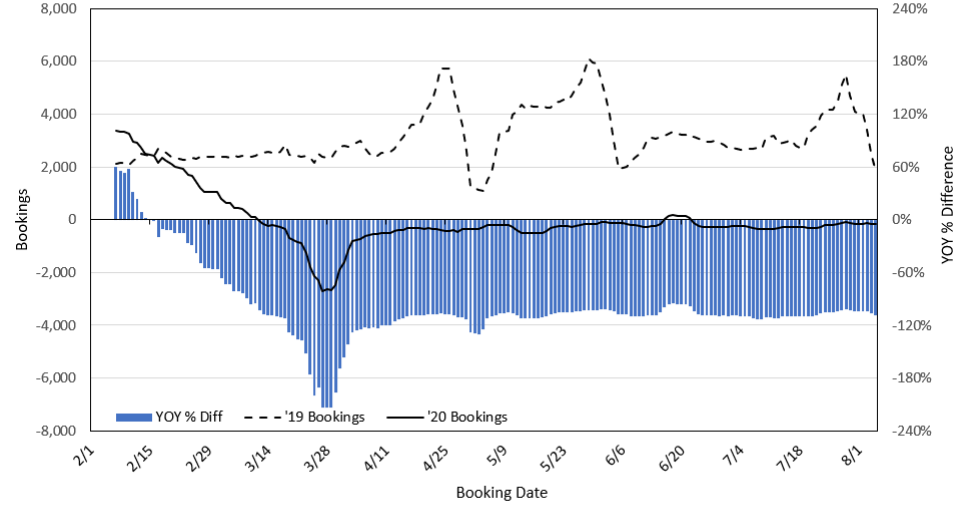
**Travel Agency Bookings to Hawaii for Future Arrivals\***  
**Based on a 7-day Moving Average, 2020 vs 2019**  
**U.S.**



\*Future Arrivals refers to all arrivals that are 'future' relative to the referenced booking date.  
 Source: Global Agency Pro

Update: Aug 5, 2020

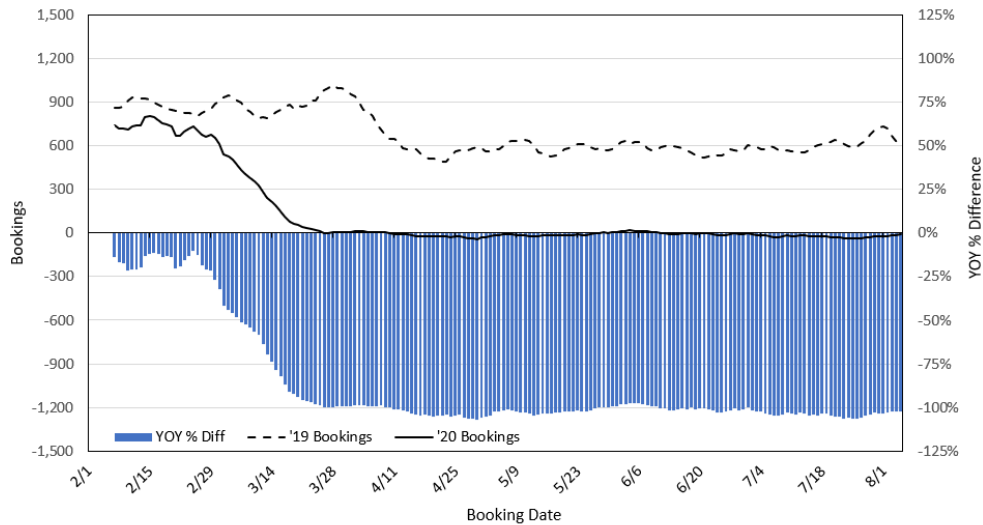
**Travel Agency Bookings to Hawaii for Future Arrivals\***  
**Based on a 7-day Moving Average, 2020 vs 2019**  
**Japan**



\*Future Arrivals refers to all arrivals that are 'future' relative to the referenced booking date.  
 Source: Global Agency Pro

Update: Aug 5, 2020

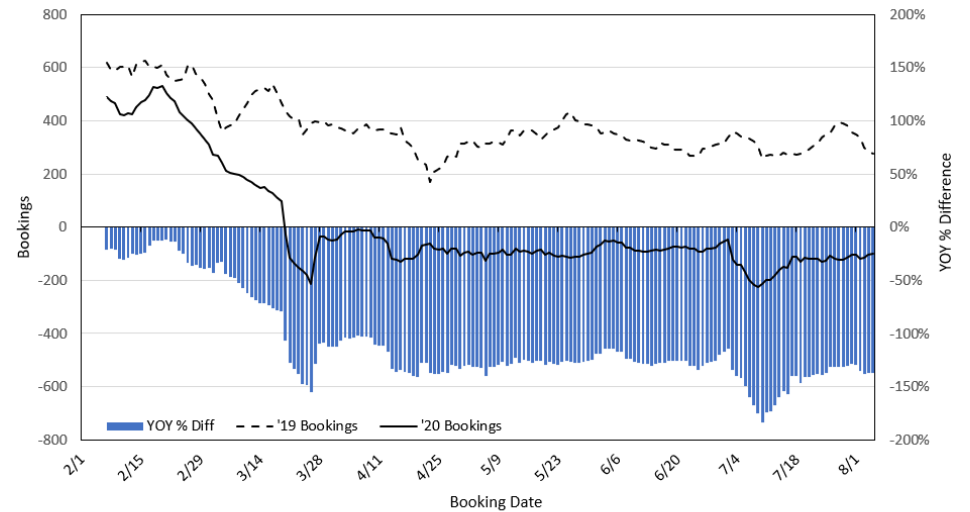
**Travel Agency Bookings to Hawaii for Future Arrivals\***  
**Based on a 7-day Moving Average, 2020 vs 2019**  
**Canada**



\*Future Arrivals refers to all arrivals that are 'future' relative to the referenced booking date.  
 Source: Global Agency Pro

Update: Aug 5, 2020

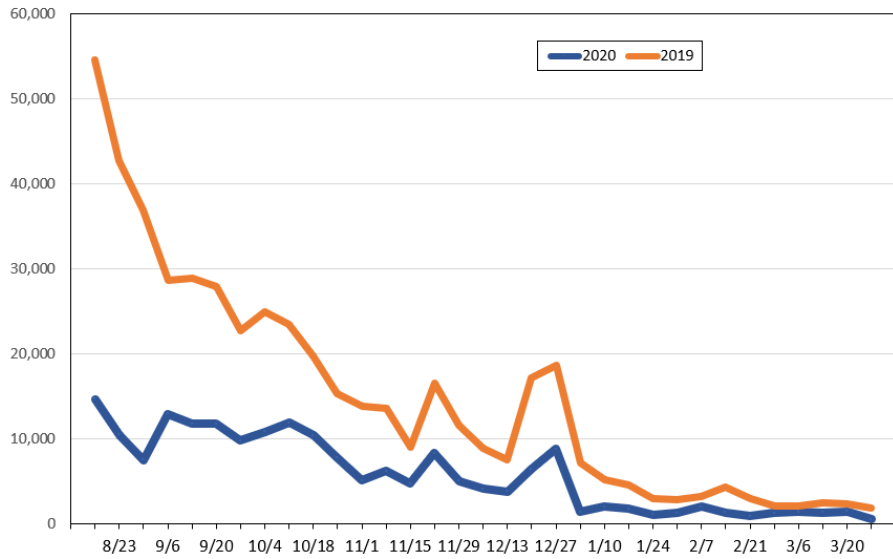
**Travel Agency Bookings to Hawaii for Future Arrivals\***  
**Based on a 7-day Moving Average, 2020 vs 2019**  
**Australia**



\*Future Arrivals refers to all arrivals that are 'future' relative to the referenced booking date.  
 Source: Global Agency Pro

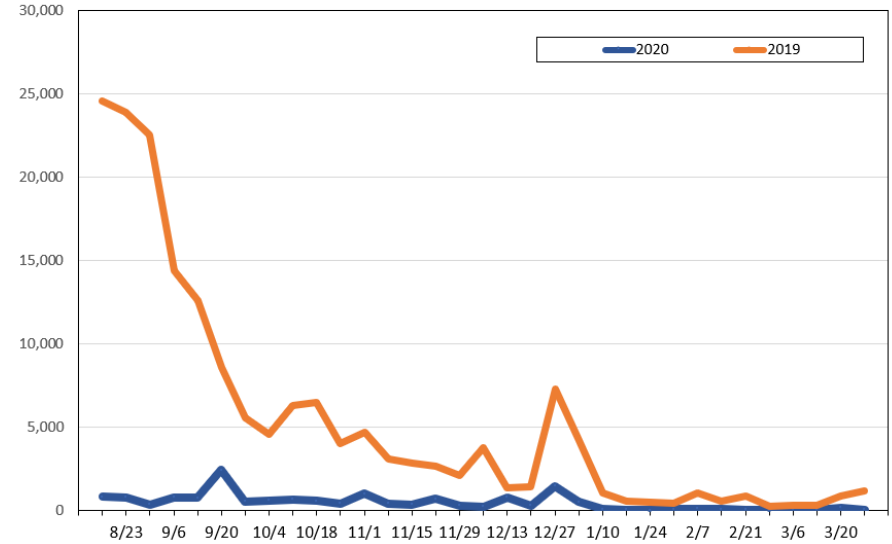
Update: Aug 5, 2020

**Travel Agency Weekly Bookings for Future Travel to Hawai'i as of August 5, 2020**  
U.S.



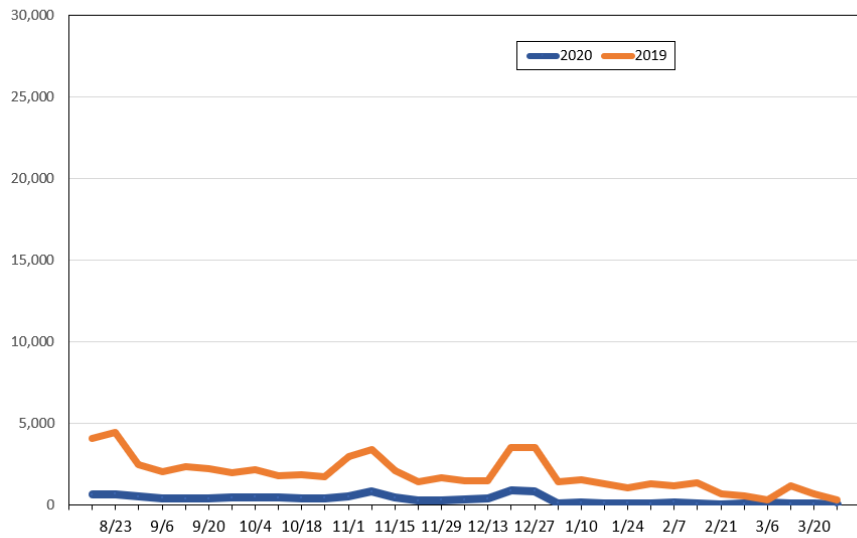
Source: Global Agency Pro, as of August 5, 2020

**Travel Agency Weekly Bookings for Future Travel to Hawai'i as of August 5, 2020**  
Japan



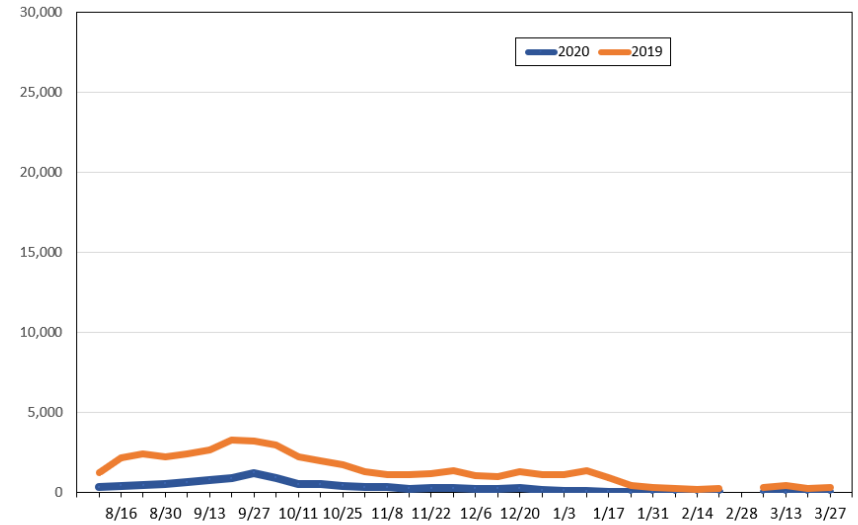
Source: Global Agency Pro, as of August 5, 2020

**Travel Agency Weekly Bookings for Future Travel to Hawai'i as of August 5, 2020**  
Canada



Source: Global Agency Pro, as of August 5, 2020

**Travel Agency Weekly Bookings for Future Travel to Hawai'i as of August 5, 2020**  
Australia



Source: Global Agency Pro, as of August 5, 2020