

# HTA COVID-19 UPDATE

(Issued: 8/18/20 @ 4:00pm)

## Novel Coronavirus in Hawaii

COVID-19 Positive\* Cases

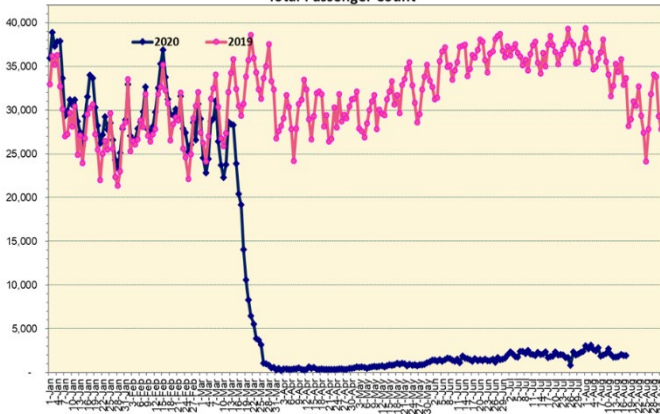
Cumulative totals as of 12:00 noon on August 18, 2020

Statewide	Total
Total Cases	<b>5349</b> (134 new)
Released from Isolation†	1921
Required Hospitalization	300
Deaths	41
BY COUNTY	Total
Hawaii County	
Total Cases	152
Released from Isolation†	130
Required Hospitalization	6
Deaths	0
Honolulu County	
Total Cases	4878
Released from Isolation†	1580
Required Hospitalization	261
Deaths	34
Kauai County	
Total Cases	54
Released from Isolation†	48
Required Hospitalization	1
Deaths	0
Maui County	
Total Cases	242
Released from Isolation†	163
Required Hospitalization	30
Deaths	6
HI Residents diagnosed outside of HI	23
County Pending	0

\*includes presumptive and confirmed cases, data are preliminary and subject to change; note that CDC provides case counts according to states of residence.

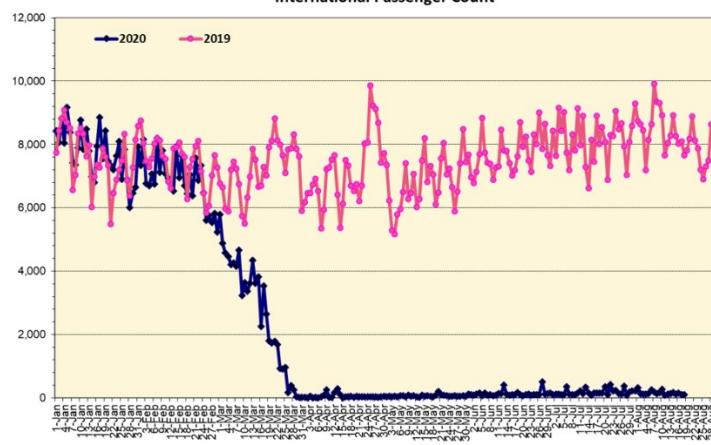
†Isolation should be maintained until at least 3 days (72 hours) after resolution of fever and myalgia without the use of antipyretics OR at least 7 days have passed since symptom onset, whichever is longer.

Total Passenger Count



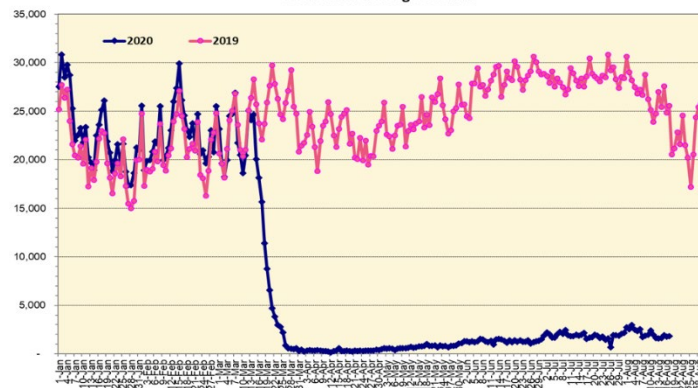
Note: Excludes flights from Canada

International Passenger Count



Note: Excludes flights from Canada

Domestic Passenger Count



### Daily Passenger Count Table

08/17/2020	Domestic	International	Total
Oahu	1538	109	1647
Maui	143		143
Island of Hawaii	110		110
Kauai	35		35
State	1826	109	1935

### 8/18/20 Hawaii Passenger Arrivals by Air Update

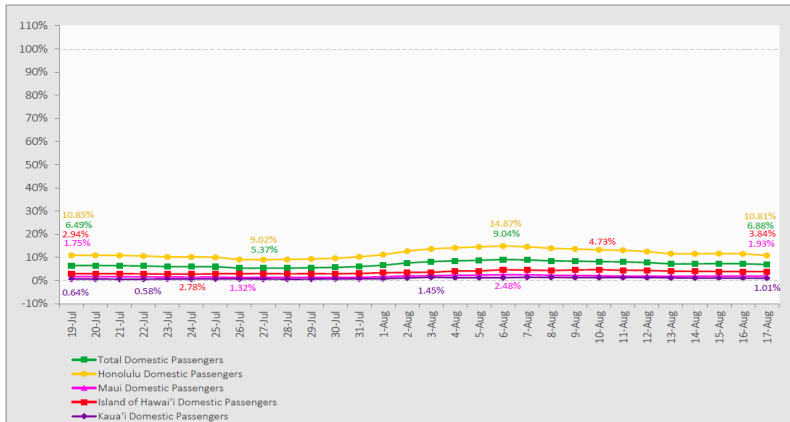
Yesterday, 2305 people arrived in Hawaii. This table shows the number of people who arrived by air from out of state yesterday and does not include interisland travel. This data was collected from the Hawaii DOT new Mandatory Travel Declaration Form.

	Kona	Maui	Oahu	Lihue	Total
Crew	14	24	195	6	239
Transit	1		121		122
Military		11	126		137
Exempt			179		179
Relocate to Hawaii	17	20	297	3	337
Returning Resident	49	71	612	16	748
Visitor	49	41	424	29	543
<b>Grand Total</b>	<b>130</b>	<b>167</b>	<b>1954</b>	<b>54</b>	<b>2305</b>
<b>Flights</b>	<b>4</b>	<b>3</b>	<b>23</b>	<b>1</b>	<b>31</b>

Market Impact Update: <https://www.dropbox.com/8/18/20 HTA COVID19 Update>

### 7-Day Domestic by Island Moving Average Daily Passenger Volume

2020 Volume as Percentage of 2019 Volume  
Through August 17, 2020



Source: HVCB analysis based on data from DBEDT  
Note: Passenger volume figures include both visitors and residents.

### Domestic by Island Month-to-Date and Year-to-Date Daily Passenger Volume

2020 Volume versus 2019 Volume  
Through August 17, 2020

August 2020 (Month-to-Date through August 17)

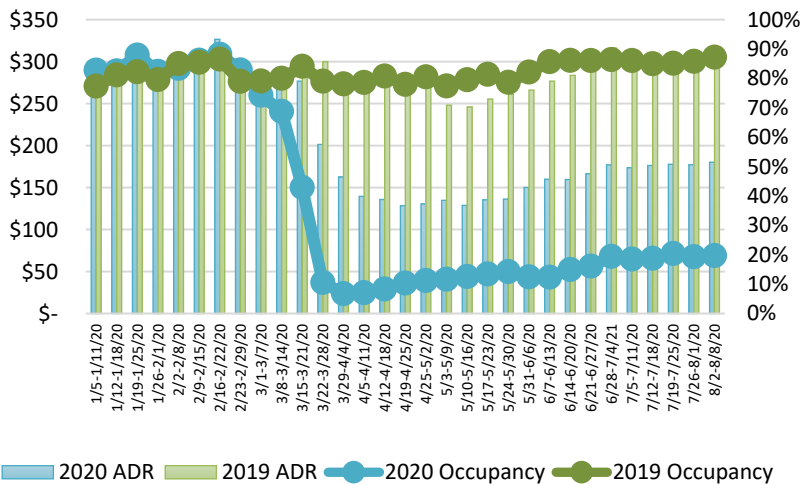
	2020	2019	Volume Change	Percent Change
Honolulu	30,694	242,553	-211,859	-87.3%
Maui County	2,588	123,709	-121,121	-97.9%
Island of Hawai'i	2,240	54,746	-52,506	-95.9%
Kaua'i	509	40,731	-40,222	-98.8%
<b>Total</b>	<b>36,031</b>	<b>461,739</b>	<b>-425,708</b>	<b>-92.2%</b>

2020 (Year-to-Date through August 17)

	2020	2019	Volume Change	Percent Change
Honolulu	1,108,063	2,965,188	-1,857,125	-62.6%
Maui County	451,870	1,454,054	-1,002,184	-68.9%
Island of Hawai'i	224,442	666,773	-442,331	-66.3%
Kaua'i	150,789	501,870	-351,081	-70.0%
<b>Total</b>	<b>1,935,164</b>	<b>5,587,885</b>	<b>-3,652,722</b>	<b>-65.4%</b>

Source: HVCB analysis based on data from DBEDT  
Note: Passenger volume figures include both visitors and residents. Total includes other international passengers. 2020 includes one additional day due to Leap Year (February 29th, 2020).

### State of Hawai'i Hotel Performance by Week - 2020 vs 2019



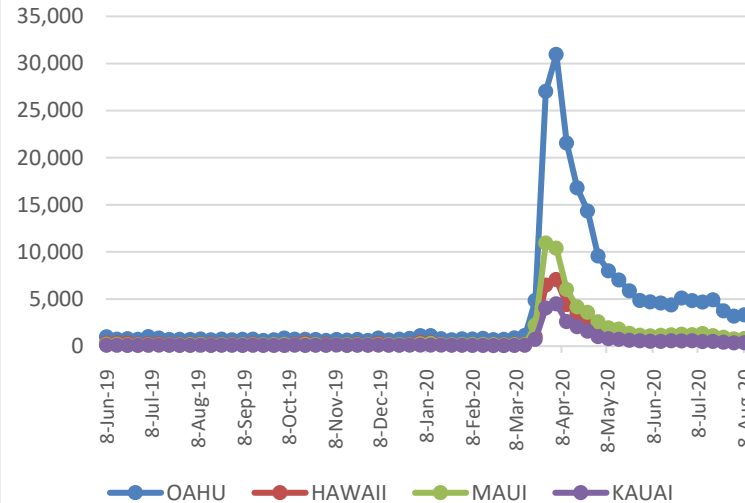
Source: STR, Inc. © Copyright 2020 Hawai'i Tourism Authority

### Hawaii Hotel Performance Info:

For the week of August 2 – August 8, 2020

	Occupancy	ADR	RevPAR
<b>State of Hawaii</b>	19.7%	\$ 180.17	\$ 35.43
<b>Oahu</b>	20.2%	\$ 173.15	\$ 34.97
<b>Maui County</b>	13.7%	\$ 217.53	\$ 29.73
<b>Kauai County</b>	19.5%	\$ 186.62	\$ 36.40
<b>Island of Hawaii</b>	26.7%	\$ 169.26	\$ 45.27

### 2020 Initial Weekly Unemployment Claims by Island



### Weekly Unemployment Initial Claims: August 8, 2020

State of Hawaii	5,314
C&C of Oahu	3,310
Hawaii County	738
Maui County	770
Kauai County	350
Agent (filed in Hawaii against another state)	146

## News Highlights

August 18, 2020

**Hawaii News Now:** [Ige opts not to institute shutdown as infections surge, OKs new rules on gatherings instead](#)

**KHON2:** [Local companies updating new mask policies, some masks off limits](#)

**KHON2:** [Gov. Ige plans to announce more restrictions this week](#)

**KHON2:** [Over 2,000 passengers arrive in Hawaii during ongoing coronavirus pandemic](#)

**The Garden Island:** [Woman arrested for breaking quarantine](#)

**Hawaii Tribune-Herald:** [Pandemic suppresses Big Island film industry](#)

**New York Post:** [Woman ambushes Hawaii beach wedding over COVID-19 regulations](#)

**CNBC:** [Here's what happened when the world's most popular islands let tourists back in](#)

**Travel Pulse:** [Airline Industry Sets Global Standards for Health and Safety Amid COVID-19](#)

**FOX:** [Hawaiian Airlines bans masks with vents or valves, institutes medical screenings for those claiming exemptions](#)

#### Helpful Resources

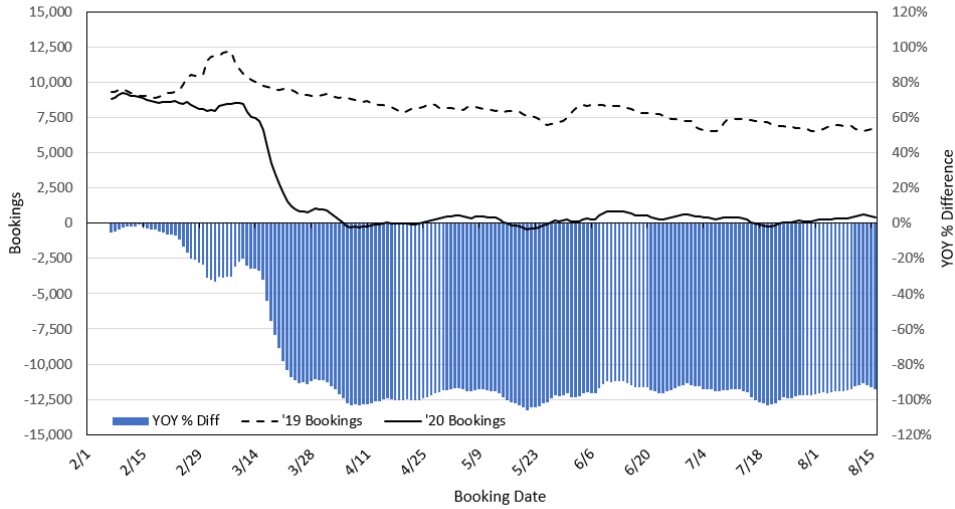
Department of Health  
<https://hawaiiocovid19.com/>

Department of Health  
<https://health.hawaii.gov/docd/advisories/novel-coronavirus-2019>

Dept. of Business, Economic Development & Tourism  
<https://dbedt.hawaii.gov/economic/covid19/>

Department of Transportation  
<https://hidot.hawaii.gov/coronavirus/>

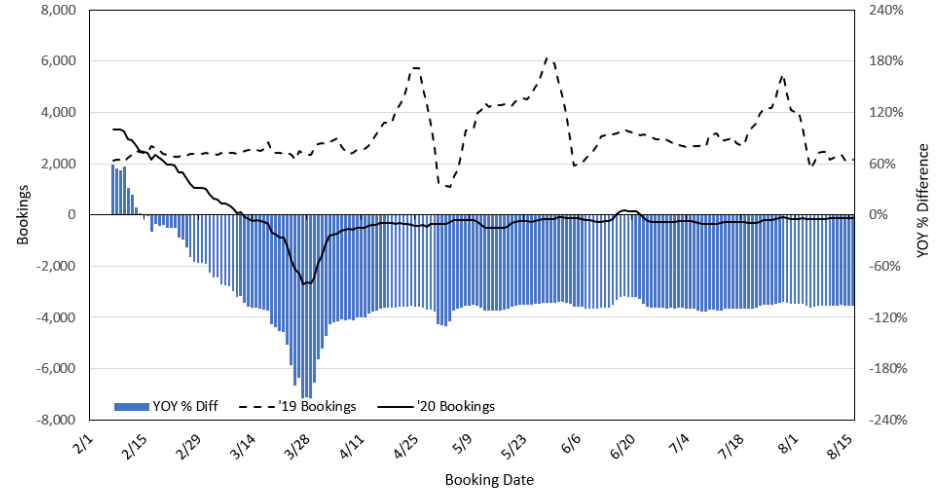
**Travel Agency Bookings to Hawaii for Future Arrivals\*  
Based on a 7-day Moving Average, 2020 vs 2019  
U.S.**



\*Future Arrivals refers to all arrivals that are 'future' relative to the referenced booking date.  
Source: Global Agency Pro

Update: Aug 16, 2020

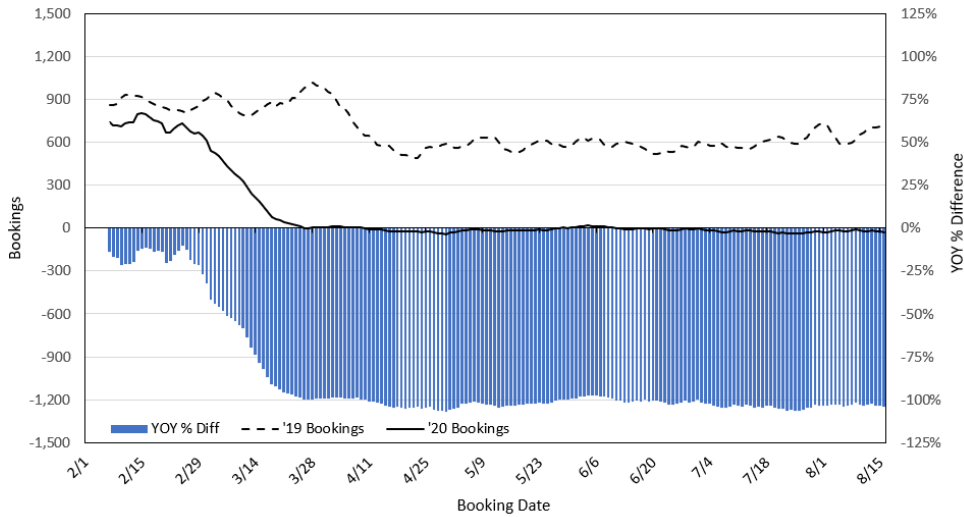
**Travel Agency Bookings to Hawaii for Future Arrivals\*  
Based on a 7-day Moving Average, 2020 vs 2019  
Japan**



\*Future Arrivals refers to all arrivals that are 'future' relative to the referenced booking date.  
Source: Global Agency Pro

Update: Aug 16, 2020

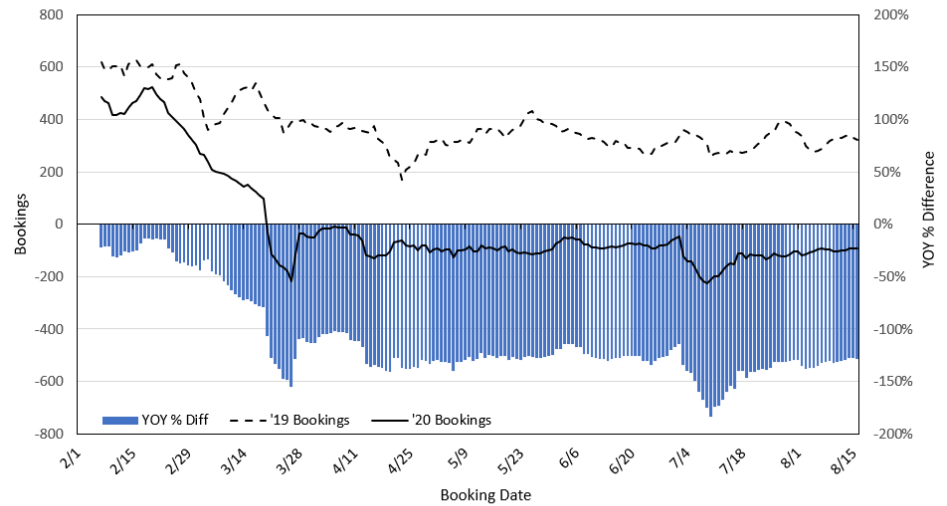
**Travel Agency Bookings to Hawaii for Future Arrivals\*  
Based on a 7-day Moving Average, 2020 vs 2019  
Canada**



\*Future Arrivals refers to all arrivals that are 'future' relative to the referenced booking date.  
Source: Global Agency Pro

Update: Aug 16, 2020

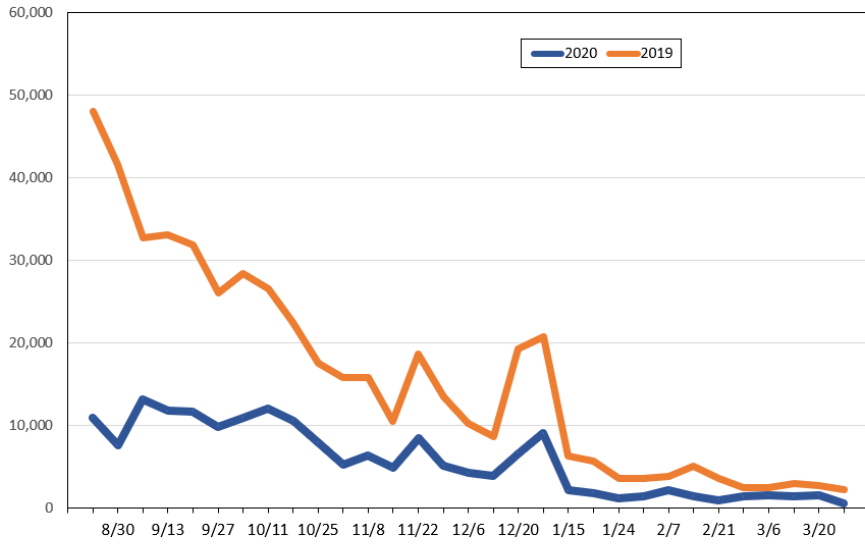
**Travel Agency Bookings to Hawaii for Future Arrivals\*  
Based on a 7-day Moving Average, 2020 vs 2019  
Australia**



\*Future Arrivals refers to all arrivals that are 'future' relative to the referenced booking date.  
Source: Global Agency Pro

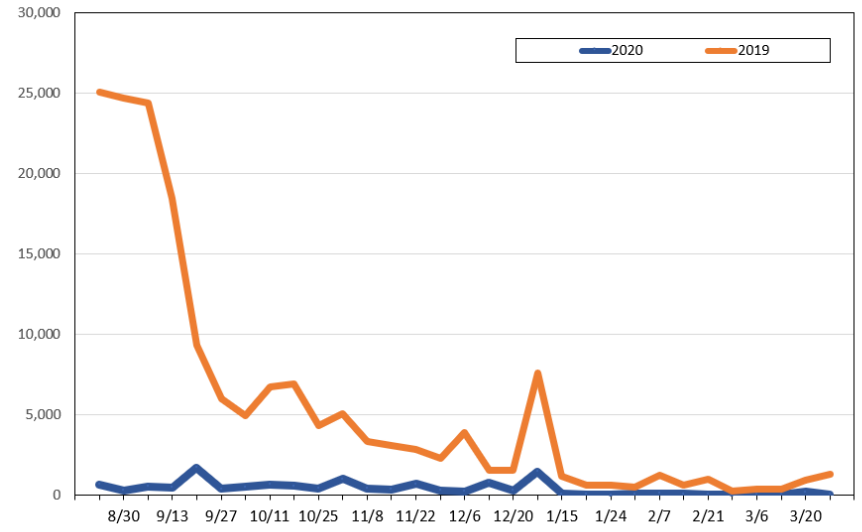
Update: Aug 16, 2020

**Travel Agency Weekly Bookings for Future Travel to Hawai'i as of August 16, 2020**  
U.S.



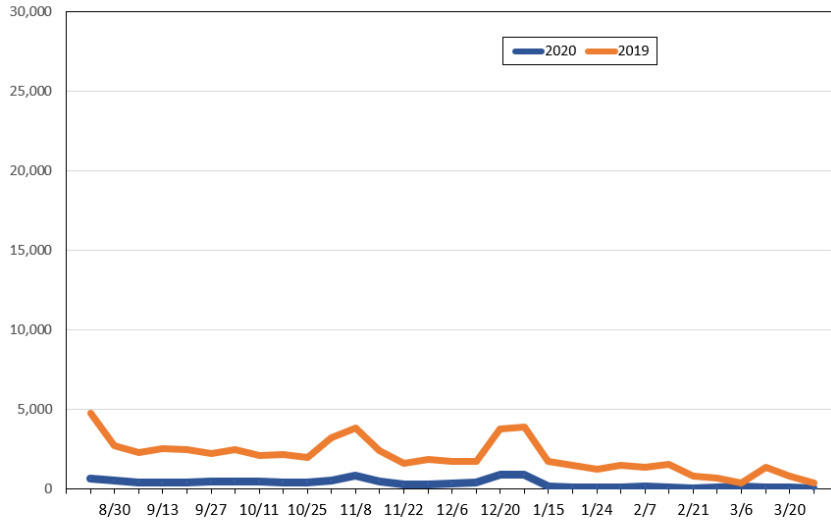
Source: Global Agency Pro, as of August 16, 2020

**Travel Agency Weekly Bookings for Future Travel to Hawai'i as of August 16, 2020**  
Japan



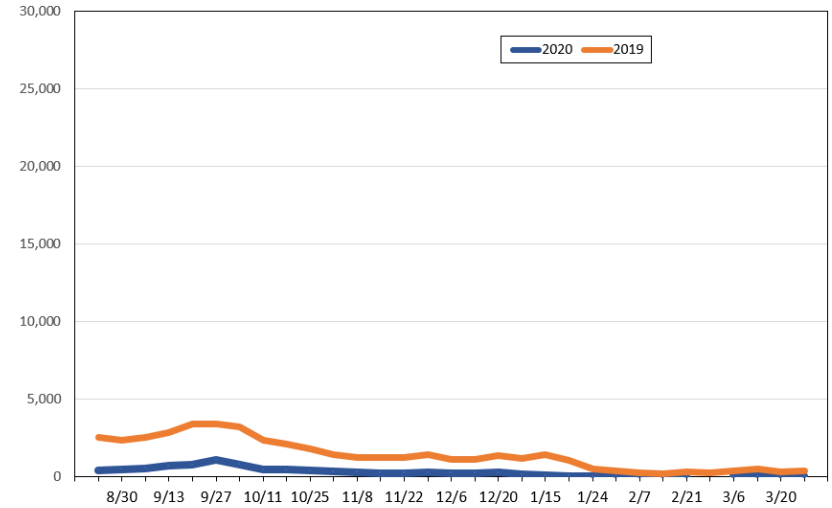
Source: Global Agency Pro, as of August 16, 2020

**Travel Agency Weekly Bookings for Future Travel to Hawai'i as of August 16, 2020**  
Canada



Source: Global Agency Pro, as of August 16, 2020

**Travel Agency Weekly Bookings for Future Travel to Hawai'i as of August 16, 2020**  
Australia



Source: Global Agency Pro, as of August 16, 2020