

HTA COVID-19 UPDATE

(Issued: 8/19/20 @ 4:30pm)

Novel Coronavirus in Hawaii

COVID-19 Positive* Cases

Cumulative totals as of 12:00 noon on August 19, 2020

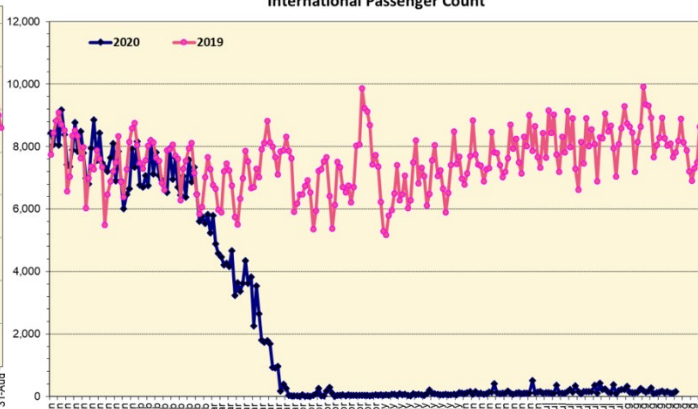
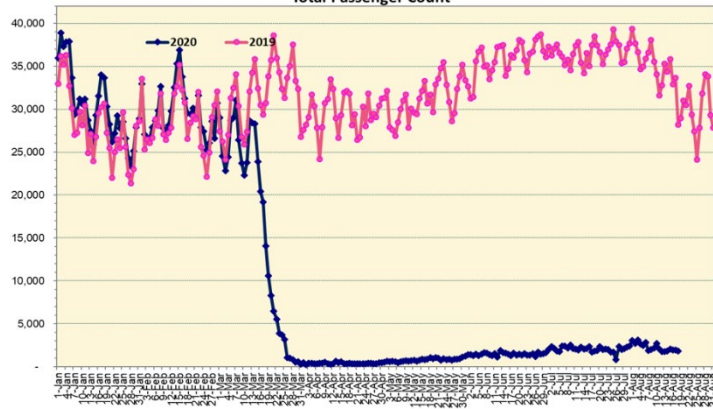
Statewide	Total
Total Cases	5609 (261 new)
Released from Isolation†	1977
Required Hospitalization	303
Deaths	42
BY COUNTY	Total
Hawaii County	
Total Cases	159
Released from Isolation†	133
Required Hospitalization	6
Deaths	0
Honolulu County	
Total Cases	5111
Released from Isolation†	1631
Required Hospitalization	263
Deaths	35
Kauai County	
Total Cases	54
Released from Isolation†	48
Required Hospitalization	1
Deaths	0
Maui County	
Total Cases	262
Released from Isolation†	165
Required Hospitalization	31
Deaths	6
HI Residents diagnosed outside of HI	23
County Pending	0

*includes presumptive and confirmed cases, data are preliminary and subject to change; note that CDC provides case counts according to states of residence.

†Isolation should be maintained until at least 3 days (72 hours) after resolution of fever and myalgia without the use of antipyretics OR at least 7 days have passed since symptom onset, whichever is longer.

Total Passenger Count

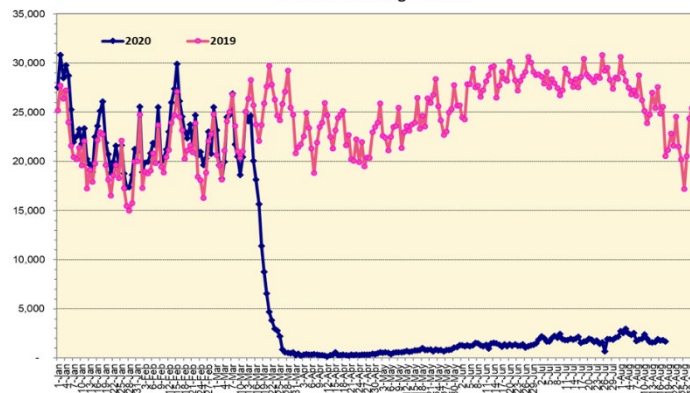
International Passenger Count



Note: Excludes flights from Canada

Note: Excludes flights from Canada

Domestic Passenger Count



Daily Passenger Count Table

08/18/2020	Domestic	International	Total
Oahu	1442	102	1544
Maui	93		93
Island of Hawaii	152		152
Kauai	0		0
State	1687	102	1789

8/19/20 Hawaii Passenger Arrivals by Air Update

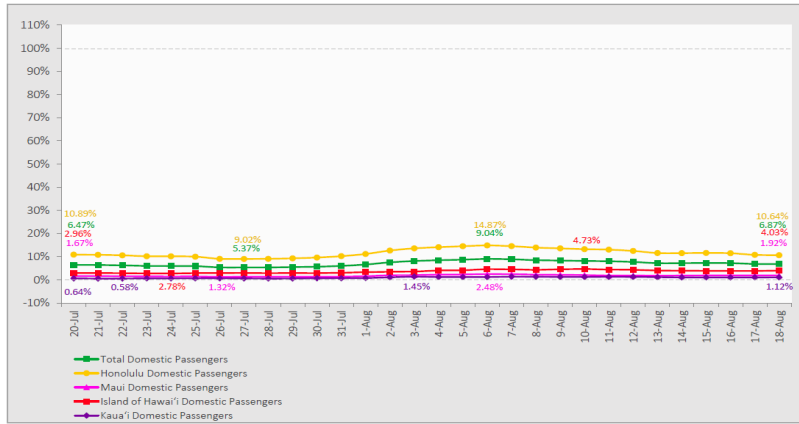
Yesterday, 2080 people arrived in Hawaii. This table shows the number of people who arrived by air from out of state yesterday and does not include interisland travel. This data was collected from the Hawaii DOT new Mandatory Travel Declaration Form.

	Kona	Maui	Oahu	Lihue	Total
Crew	15	24	105		144
Transit	1		120		121
Military		11	103		114
Exempt			205		205
Relocate to Hawaii	7	20	237		264
Returning Resident	96	71	549		716
Visitor	49	41	426		516
Grand Total	168	167	1745	0	2080
Flights	3	3	21	0	27

Market Impact Update: <https://www.dropbox.com/8/19/20 HTA COVID19 Update>

7-Day Domestic by Island Moving Average Daily Passenger Volume

2020 Volume as Percentage of 2019 Volume
Through August 18, 2020



Source: HVCB analysis based on data from DBEDT
Note: Passenger volume figures include both visitors and residents.

Domestic by Island Month-to-Date and Year-to-Date Daily Passenger Volume

2020 Volume versus 2019 Volume
Through August 18, 2020

August 2020 (Month-to-Date through August 18)

	2020	2019	Volume Change	Percent Change
Honolulu	32,136	256,599	-224,463	-87.5%
Maui County	2,681	130,027	-127,346	-97.9%
Island of Hawai'i	2,392	57,248	-54,856	-95.8%
Kaua'i	522	42,734	-42,212	-98.8%
Total	37,731	486,608	-448,877	-92.2%

2020 (Year-to-Date through August 18)

	2020	2019	Volume Change	Percent Change
Honolulu	1,109,505	2,979,234	-1,869,729	-62.8%
Maui County	451,963	1,460,372	-1,008,409	-69.1%
Island of Hawai'i	224,594	669,275	-444,681	-66.4%
Kaua'i	150,802	503,873	-353,071	-70.1%
Total	1,936,864	5,612,754	-3,675,891	-65.5%

Source: HVCB analysis based on data from DBEDT
Note: Passenger volume figures include both visitors and residents. Total includes other international passengers. 2020 includes one additional day due to Leap Year (February 29th, 2020).

News Highlights

August 19, 2020

KHON2: [Chicago visitors arrested for violating Hawaii's mandatory 14-day quarantine](#)

Honolulu Civil Beat: [Oahu Crackdown: 5 People Max At Any Social Gathering](#)

Maui Now: [Maui and Oahu COVID-19 Clusters Detailed](#)

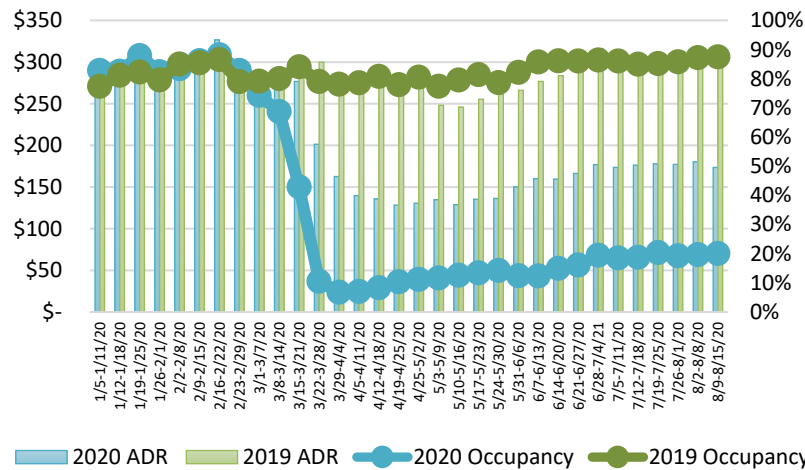
Travel Pulse: [Hawaii Pushes Back Tourism Reopening Until At Least October 1](#)

FOX: [Hawaii governor delays program that would allow tourists to visit without quarantining](#)

Washington Post: [Hawaii won't allow tourist until at least October because of coronavirus stage](#)

Forbes: [Hawaii Travel Update: Mandatory Quarantine Extended Until October, Pre-Arrival Testing Program Delayed](#)

State of Hawai'i Hotel Performance by Week - 2020 vs 2019



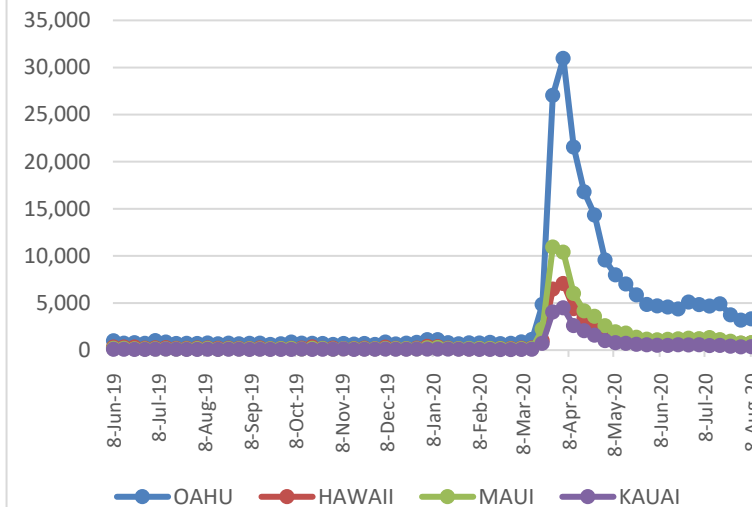
Source: STR, Inc. © Copyright 2020 Hawai'i Tourism Authority

Hawaii Hotel Performance Info:

For the week of August 9 – August 15, 2020

	Occupancy	ADR	RevPAR
State of Hawaii	20.0%	\$ 173.50	\$ 34.74
Oahu	22.8%	\$ 165.53	\$ 37.72
Maui County	11.1%	\$ 225.73	\$ 25.12
Kauai County	15.4%	\$ 182.91	\$ 28.21
Island of Hawaii	25.3%	\$ 164.04	\$ 41.57

2020 Initial Weekly Unemployment Claims by Island



Weekly Unemployment Initial Claims: August 8, 2020

State of Hawaii	5,314
C&C of Oahu	3,310
Hawaii County	738
Maui County	770
Kauai County	350
Agent (filed in Hawaii against another state)	146

Helpful Resources

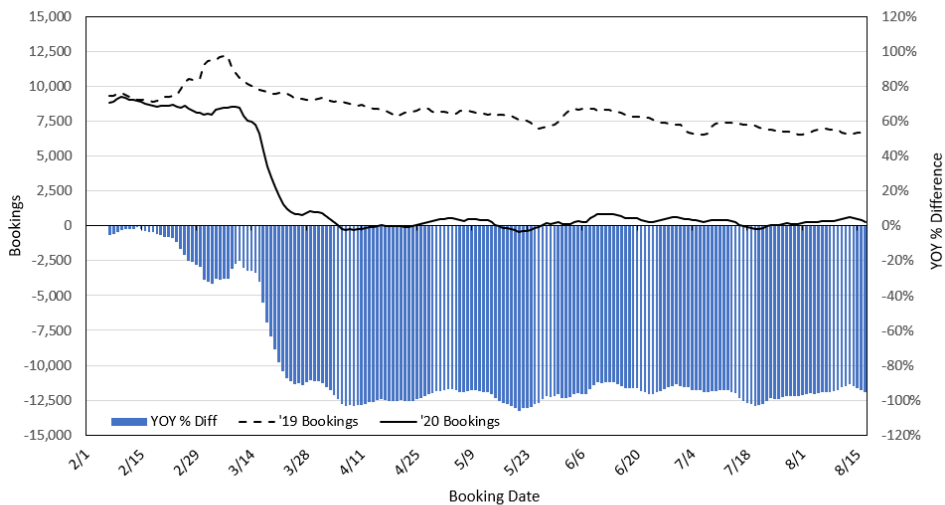
Department of Health
<https://hawaiiocovid19.com/>

Department of Health
<https://health.hawaii.gov/docd/advisories/novel-coronavirus-2019>

Dept. of Business, Economic Development & Tourism
<https://dbedt.hawaii.gov/economic/covid19/>

Department of Transportation
<https://hidot.hawaii.gov/coronavirus/>

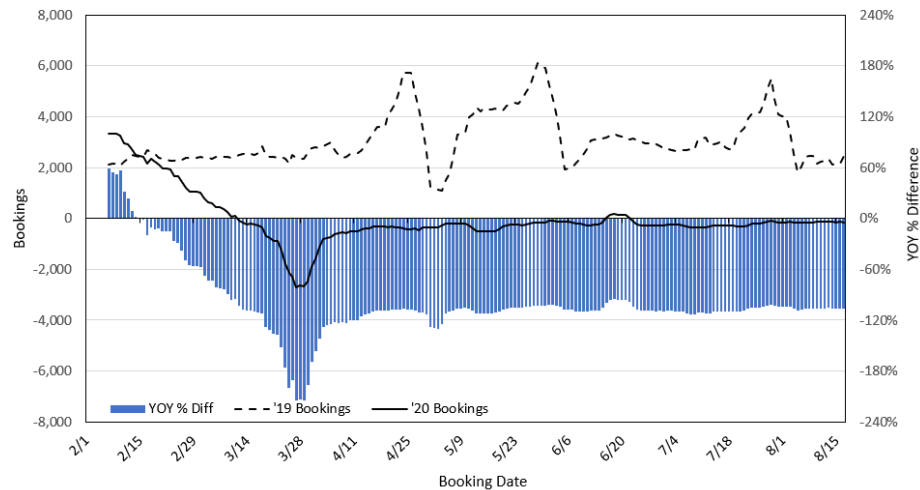
Travel Agency Bookings to Hawaii for Future Arrivals*
Based on a 7-day Moving Average, 2020 vs 2019
U.S.



*Future Arrivals refers to all arrivals that are 'future' relative to the referenced booking date.
 Source: Global Agency Pro

Update: Aug 17, 2020

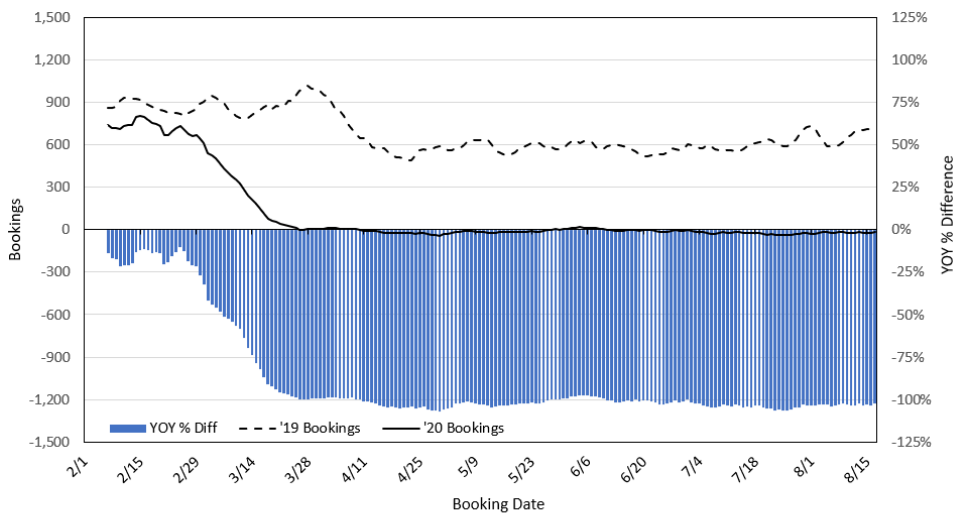
Travel Agency Bookings to Hawaii for Future Arrivals*
Based on a 7-day Moving Average, 2020 vs 2019
Japan



*Future Arrivals refers to all arrivals that are 'future' relative to the referenced booking date.
 Source: Global Agency Pro

Update: Aug 17, 2020

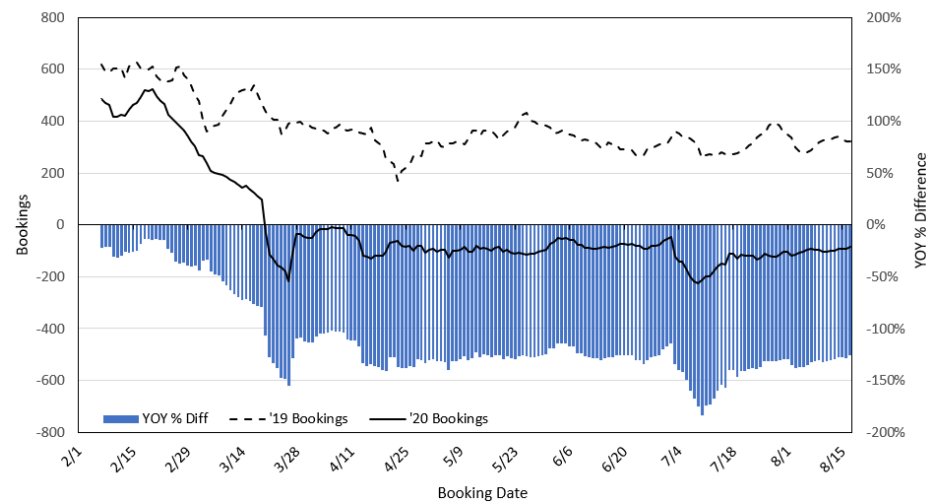
Travel Agency Bookings to Hawaii for Future Arrivals*
Based on a 7-day Moving Average, 2020 vs 2019
Canada



*Future Arrivals refers to all arrivals that are 'future' relative to the referenced booking date.
 Source: Global Agency Pro

Update: Aug 17, 2020

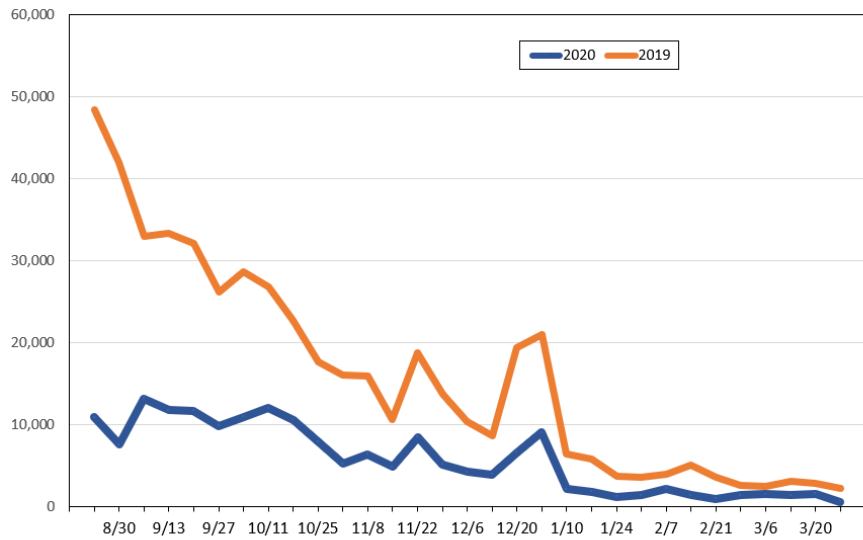
Travel Agency Bookings to Hawaii for Future Arrivals*
Based on a 7-day Moving Average, 2020 vs 2019
Australia



*Future Arrivals refers to all arrivals that are 'future' relative to the referenced booking date.
 Source: Global Agency Pro

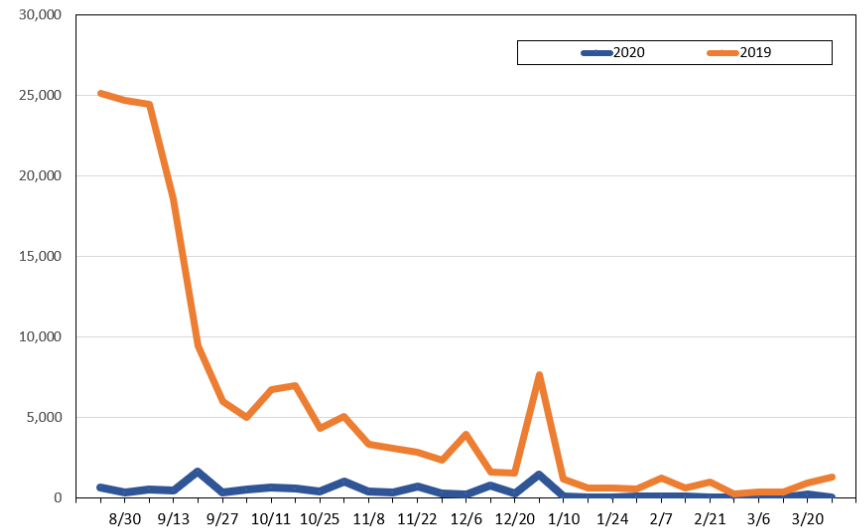
Update: Aug 17, 2020

Travel Agency Weekly Bookings for Future Travel to Hawai'i as of August 17, 2020
U.S.



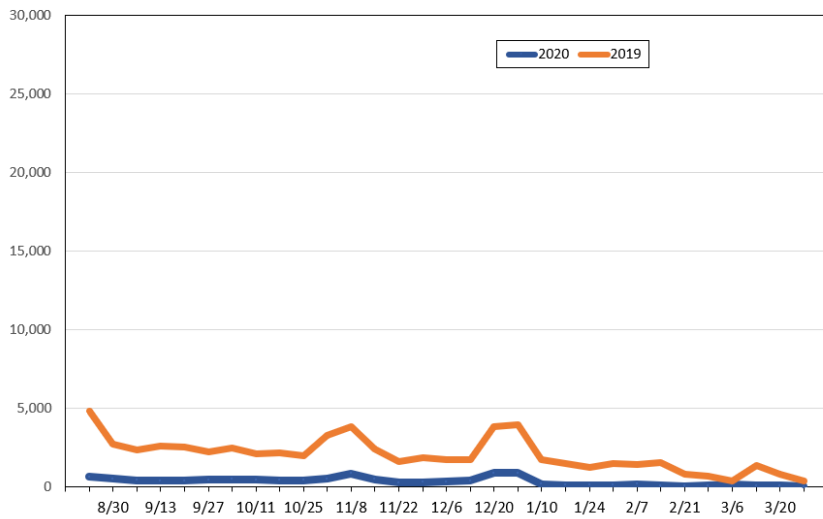
Source: Global Agency Pro, as of August 17, 2020

Travel Agency Weekly Bookings for Future Travel to Hawai'i as of August 17, 2020
Japan



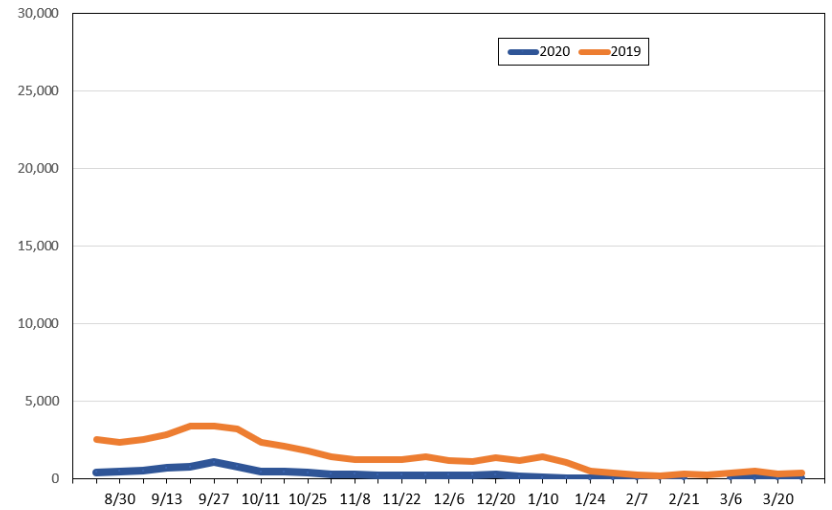
Source: Global Agency Pro, as of August 17, 2020

Travel Agency Weekly Bookings for Future Travel to Hawai'i as of August 17, 2020
Canada



Source: Global Agency Pro, as of August 17, 2020

Travel Agency Weekly Bookings for Future Travel to Hawai'i as of August 17, 2020
Australia



Source: Global Agency Pro, as of August 17, 2020