

HTA COVID-19 UPDATE

(Issued: 7/22/20 @ 4:00pm)

Novel Coronavirus in Hawaii

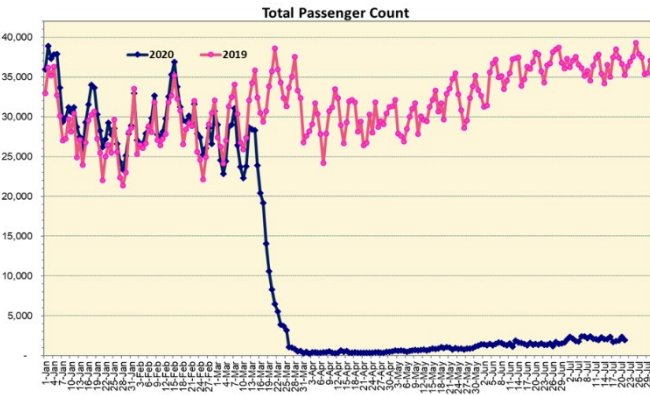
COVID-19 Positive* Cases

Cumulative totals as of 12:00 noon on July 22, 2020

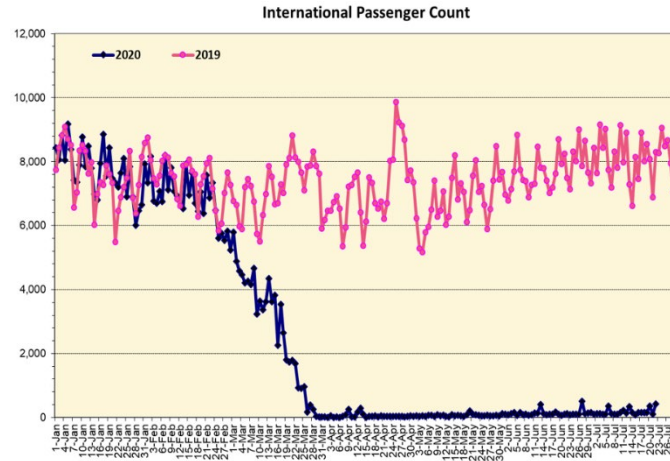
Statewide	Total
Total Cases	1435 (17 new)
Released from Isolation†	1113
Required Hospitalization	154
Deaths	25
BY COUNTY	Total
Hawaii County	
Total Cases	114
Released from Isolation†	107
Required Hospitalization	4
Deaths	0
Honolulu County	
Total Cases	1117
Released from Isolation†	842
Required Hospitalization	121
Deaths	18
Kauai County	
Total Cases	43
Released from Isolation†	42
Required Hospitalization	1
Deaths	0
Maui County	
Total Cases	139
Released from Isolation†	122
Required Hospitalization	26
Deaths	6
HI Residents diagnosed outside of HI	22
County Pending	0

*includes presumptive and confirmed cases, data are preliminary and subject to change; note that CDC provides case counts according to states of residence.

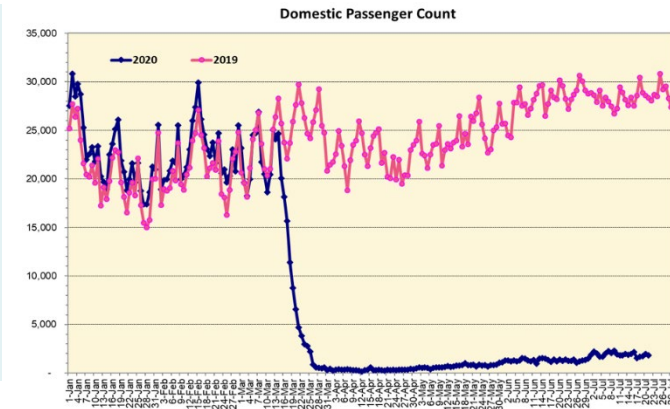
†Isolation should be maintained until at least 3 days (72 hours) after resolution of fever and myalgia without the use of antipyretics OR at least 7 days have passed since symptom onset, whichever is longer.



Note: Excludes flights from Canada



Note: Excludes flights from Canada



Daily Passenger Count Table

07/21/2020	Domestic	International	Total
Oahu	1543	111	1654
Maui	126		126
Island of Hawaii	130		130
Kauai	25		25
State	1824	111	1935

7/22/20 Hawaii Passenger Arrivals by Air Update

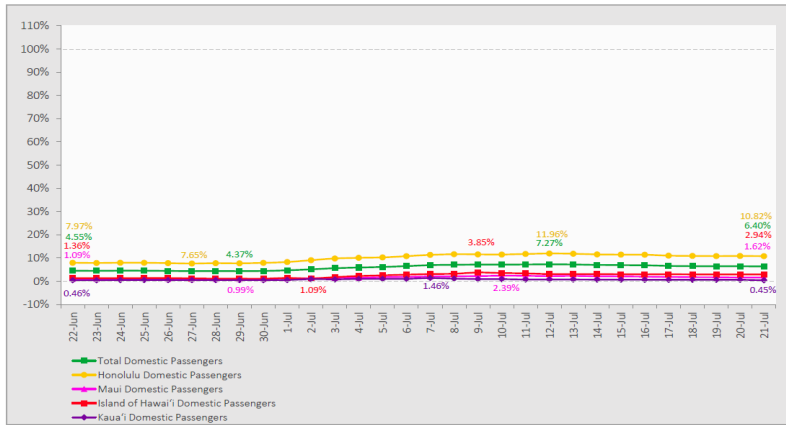
Yesterday, 2208 people arrived in Hawaii. This table shows the number of people who arrived by air from out of state yesterday and does not include interisland travel. This data was collected from the Hawaii DOT new Mandatory Travel Declaration Form.

	Kona	Maui	Oahu	Lihue	Total
Crew	6	19	238	12	275
Transit		1	154		155
Military			186		186
Exempt			113		113
Relocate to Hawaii	10	14	71	1	96
Returning Resident	78	76	724	12	890
Visitor	51	35	395	12	493
Grand Total	145	145	1881	37	2208
Flights	2	3	21	1	27

Market Impact Update: <https://www.dropbox.com/07/22/20 HTA COVID19 Update>

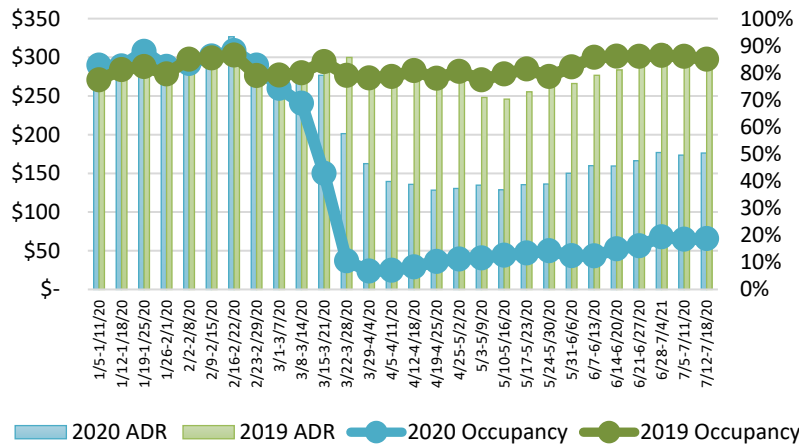
7-Day Domestic by Island Moving Average Daily Passenger Volume

2020 Volume as Percentage of 2019 Volume
Through July 21, 2020



Source: HVCB analysis based on data from DBEDT
Note: Passenger volume figures include both visitors and residents.

State of Hawai'i Hotel Performance by Week - 2020 vs 2019



Source: STR, Inc. © Copyright 2020 Hawai'i Tourism Authority

Hawaii Hotel Performance Info:

For the week of July 12 – July 18, 2020

	Occupancy	ADR	RevPAR
State of Hawaii	18.7%	\$ 176.30	\$ 33.05
Oahu	22.0%	\$ 178.81	\$ 39.33
Maui County	9.3%	\$ 207.85	\$ 19.33
Kauai County	17.0%	\$ 190.39	\$ 32.29
Island of Hawaii	22.7%	\$ 133.58	\$ 30.28

Domestic by Island Month-to-Date and Year-to-Date Daily Passenger Volume

2020 Volume versus 2019 Volume
Through July 21, 2020

July 2120 (Month-to-Date through July 21)

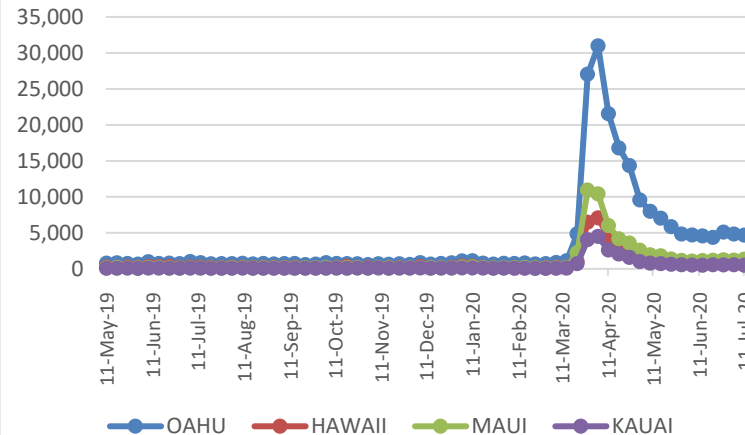
	2020	2019	Volume Change	Percent Change
Honolulu	34,677	308,288	-273,611	-88.8%
Maui County	3,132	160,487	-157,355	-98.0%
Island of Hawai'i	2,187	71,641	-69,454	-96.9%
Kaua'i	474	55,148	-54,674	-99.1%
Total	40,470	595,564	-555,094	-93.2%

2020 (Year-to-Date through July 21)

	2020	2019	Volume Change	Percent Change
Honolulu	1,062,466	2,576,163	-1,513,697	-58.8%
Maui County	448,132	1,249,948	-801,816	-64.1%
Island of Hawai'i	221,154	577,829	-356,675	-61.7%
Kaua'i	150,077	434,776	-284,699	-65.5%
Total	1,881,829	4,838,716	-2,956,887	-61.1%

Source: HVCB analysis based on data from DBEDT
Note: Passenger volume figures include both visitors and residents. Total includes other international passengers. 2020 includes one additional day due to Leap Year (February 29th, 2020).

2020 Initial Weekly Unemployment Claims by Island



Weekly Unemployment Initial Claims: July 11, 2020

State of Hawaii	7,696
C&C of Oahu	4,667
Hawaii County	1,060
Maui County	1,323
Kauai County	475
Agent (filed in Hawaii against another state)	171

News Highlights

July 22, 2020

Hawaii News Now: [In search for hidden COVID-19 cases, state program tracks surge of virus in Hawaii](#)

Honolulu Star-Advertiser: [More than 600 visitors landed in Hawaii on Monday](#)

Hawaii News Now: [Another well-known eatery in Honolulu closes amid pandemic](#)

KITV4: [Airlines appeal for coronavirus testing to restore transatlantic flights](#)

The Garden Island: [Hawaii mayor: State will not be ready to reopen by Sept. 1](#)

West Hawaii Today: ['Geofence' could help tourists roam: County explores allowing 'resort bubbles' to allow quarantiners out of hotel rooms](#)

West Hawaii Today: [Ironman World Championship canceled for first time in race history](#)

Hawaii Tribune-Herald: [Out-of-state students coming to UH-Hilo next month required to quarantine for 14 days](#)

Forbes: [Hawaii Travel Update: Some Visitor And Resident Behavior 'Pathetic,' Official Says](#)

Helpful Resources

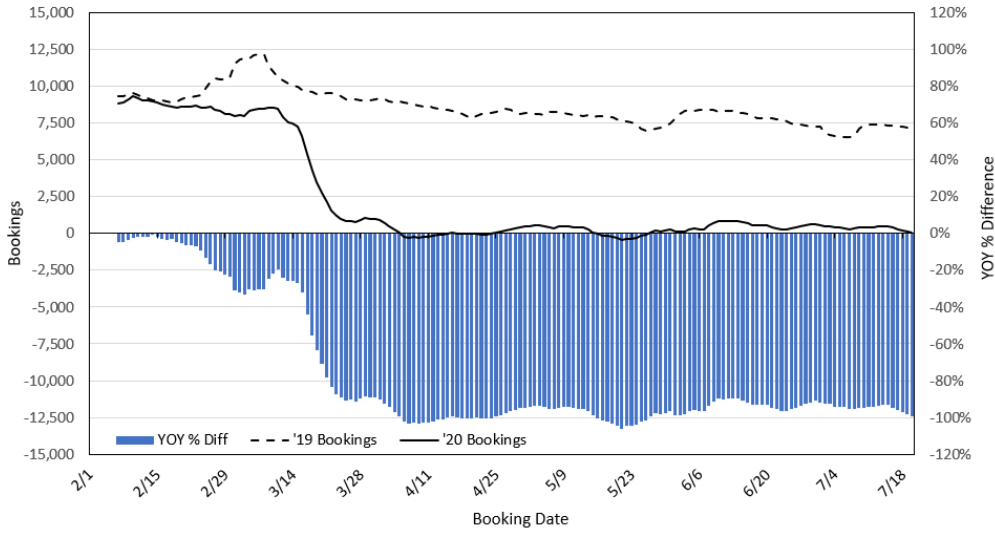
Department of Health
<https://hawaiiocovid19.com/>

Department of Health
<https://health.hawaii.gov/docd/advisories/novel-coronavirus-2019>

Dept. of Business, Economic Development & Tourism
<https://dbedt.hawaii.gov/economic/covid19/>

Department of Transportation
<https://hidot.hawaii.gov/coronavirus/>

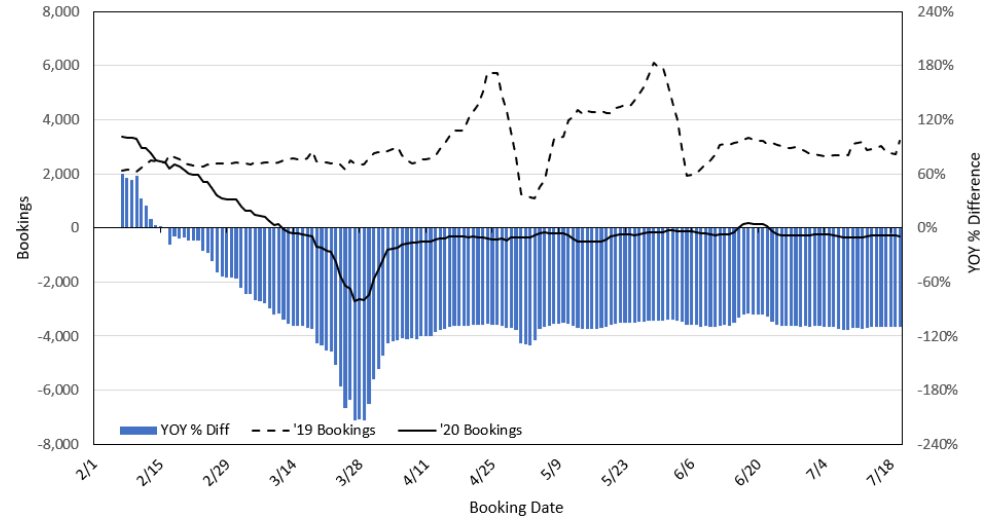
**Travel Agency Bookings to Hawaii for Future Arrivals*
Based on a 7-day Moving Average, 2020 vs 2019
U.S.**



*Future Arrivals refers to all arrivals that are 'future' relative to the referenced booking date.
Source: Global Agency Pro

Update: Jul 20, 2020

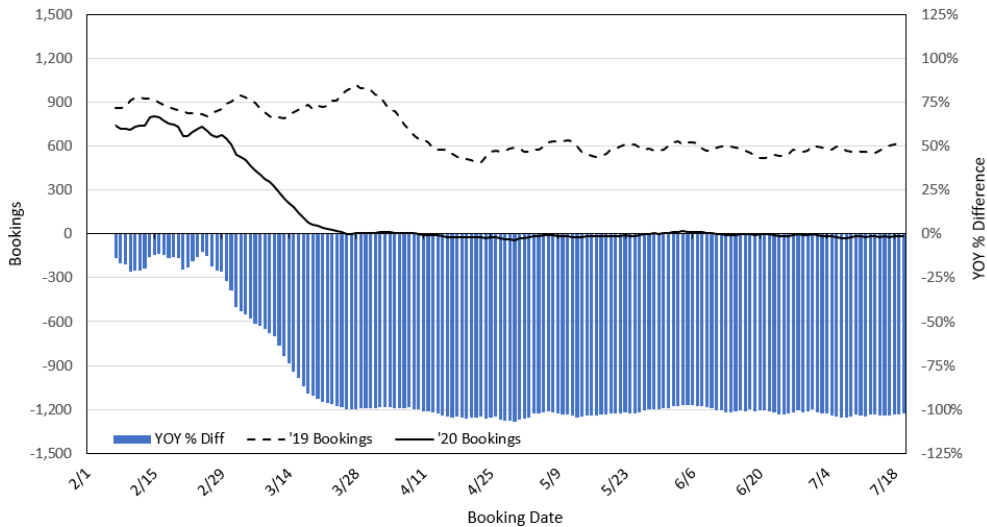
**Travel Agency Bookings to Hawaii for Future Arrivals*
Based on a 7-day Moving Average, 2020 vs 2019
Japan**



*Future Arrivals refers to all arrivals that are 'future' relative to the referenced booking date.
Source: Global Agency Pro

Update: Jul 20, 2020

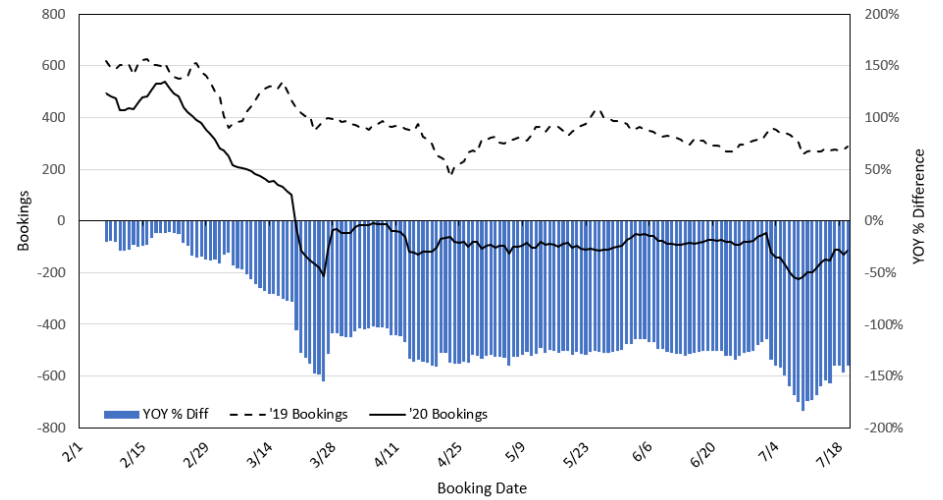
**Travel Agency Bookings to Hawaii for Future Arrivals*
Based on a 7-day Moving Average, 2020 vs 2019
Canada**



*Future Arrivals refers to all arrivals that are 'future' relative to the referenced booking date.
Source: Global Agency Pro

Update: Jul 20, 2020

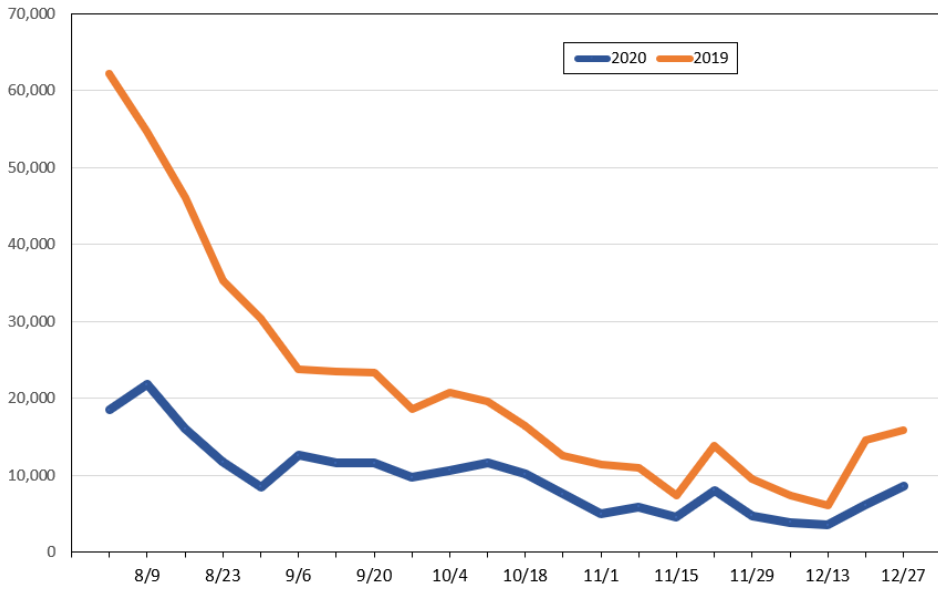
**Travel Agency Bookings to Hawaii for Future Arrivals*
Based on a 7-day Moving Average, 2020 vs 2019
Australia**



*Future Arrivals refers to all arrivals that are 'future' relative to the referenced booking date.
Source: Global Agency Pro

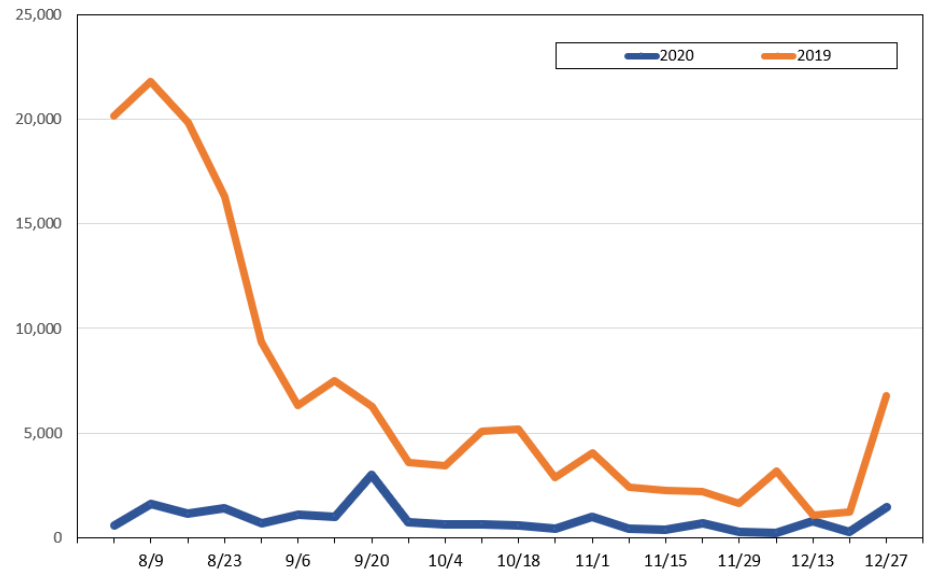
Update: Jul 20, 2020

Travel Agency Weekly Bookings for Future Travel to Hawai'i as of July 20, 2020
U.S.



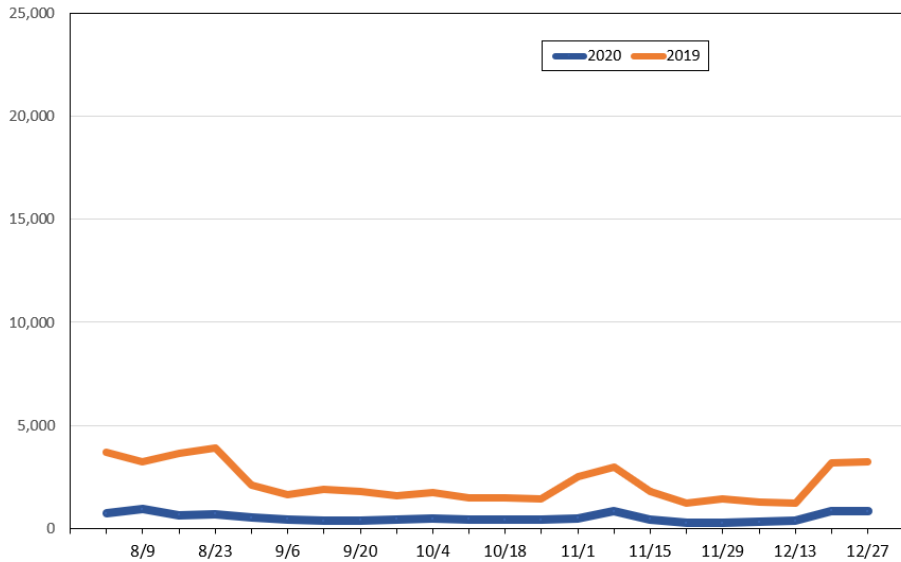
Source: Global Agency Pro, as of July 20, 2020

Travel Agency Weekly Bookings for Future Travel to Hawai'i as of July 20, 2020
Japan



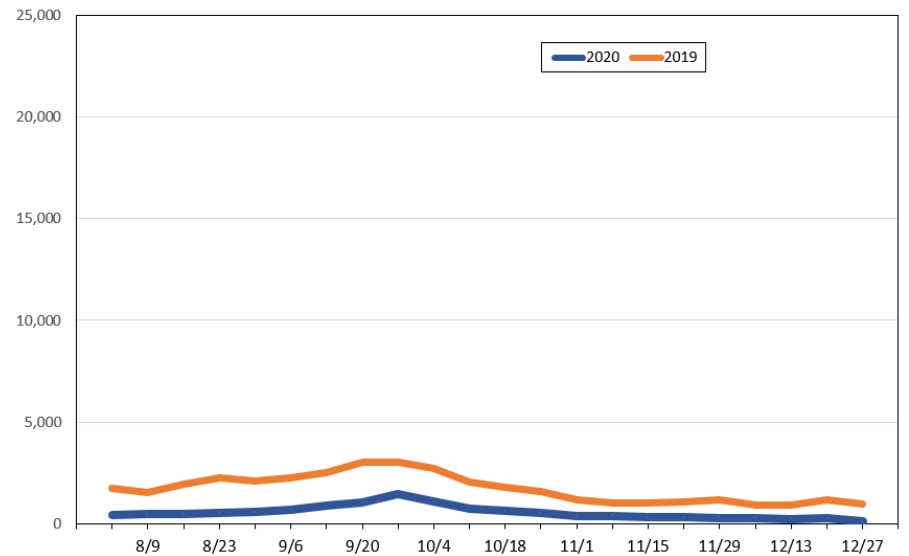
Source: Global Agency Pro, as of July 20, 2020

Travel Agency Weekly Bookings for Future Travel to Hawai'i as of July 20, 2020
Canada



Source: Global Agency Pro, as of July 20, 2020

Travel Agency Weekly Bookings for Future Travel to Hawai'i as of July 20, 2020
Australia



Source: Global Agency Pro, as of July 20, 2020