

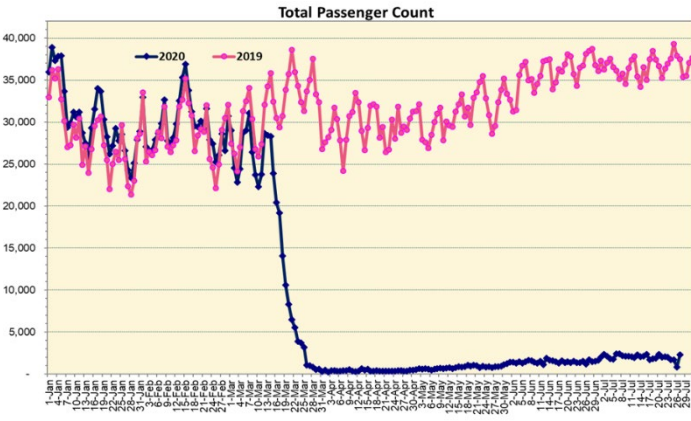
HTA COVID-19 UPDATE

(Issued: 7/28/20 @ 4:00pm)

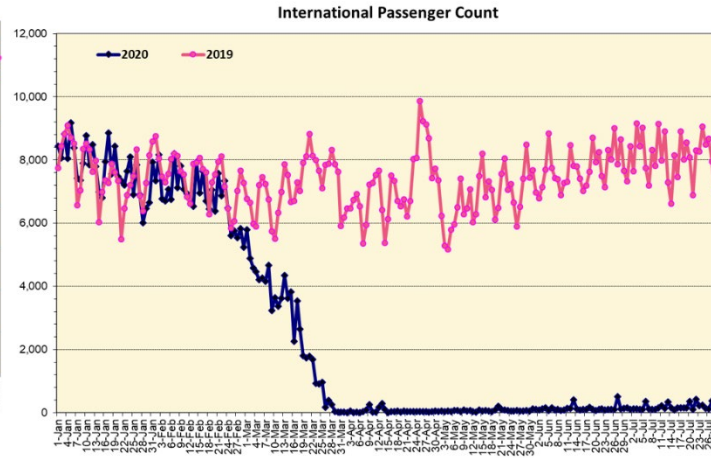
Novel Coronavirus in Hawaii

COVID-19 Positive* Cases

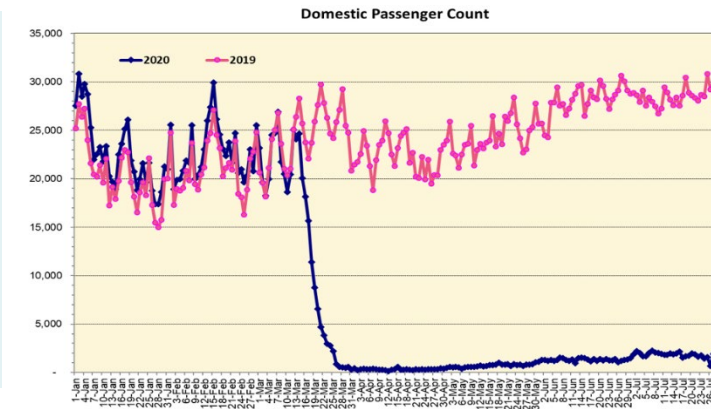
Cumulative totals as of 12:00 noon on July 28, 2020



Note: Excludes flights from Canada



Note: Excludes flights from Canada



Daily Passenger Count Table

07/27/2020	Domestic	International	Total
Oahu	1674	380	2054
Maui	176		176
Island of Hawaii	81		81
Kauai	0		0
State	1931	380	2311

7/28/20 Hawaii Passenger Arrivals by Air Update

Yesterday, 2671 people arrived in Hawaii. This table shows the number of people who arrived by air from out of state yesterday and does not include interisland travel. This data was collected from the Hawaii DOT new Mandatory Travel Declaration Form.

	Kona	Maui	Oahu	Lihue	Total
Crew	12	34	334		380
Transit		1	163		164
Military			176		176
Exempt			225		225
Relocate to Hawaii	21	9	118		148
Returning Resident	46	99	908		1053
Visitor	20	67	438		525
Grand Total	99	210	2362	0	2671
Flights	3	4	29	0	36

Statewide	Total
Total Cases	1757 (47 new)
Released from Isolation†	1205
Required Hospitalization	167
Deaths	26
BY COUNTY	Total
Hawaii County	
Total Cases	116
Released from Isolation†	114
Required Hospitalization	4
Deaths	0
Honolulu County	
Total Cases	1419
Released from Isolation†	924
Required Hospitalization	134
Deaths	19
Kauai County	
Total Cases	45
Released from Isolation†	42
Required Hospitalization	1
Deaths	0
Maui County	
Total Cases	154
Released from Isolation†	125
Required Hospitalization	26
Deaths	6
HI Residents diagnosed outside of HI	23
County Pending	0

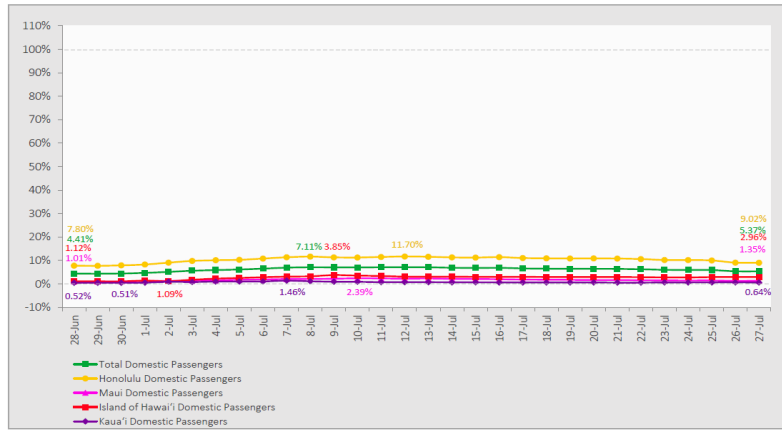
*includes presumptive and confirmed cases, data are preliminary and subject to change; note that CDC provides case counts according to states of residence.

†Isolation should be maintained until at least 3 days (72 hours) after resolution of fever and myalgia without the use of antipyretics OR at least 7 days have passed since symptom onset, whichever is longer.

Market Impact Update: <https://www.dropbox.com/07/28/20 HTA COVID19 Update>

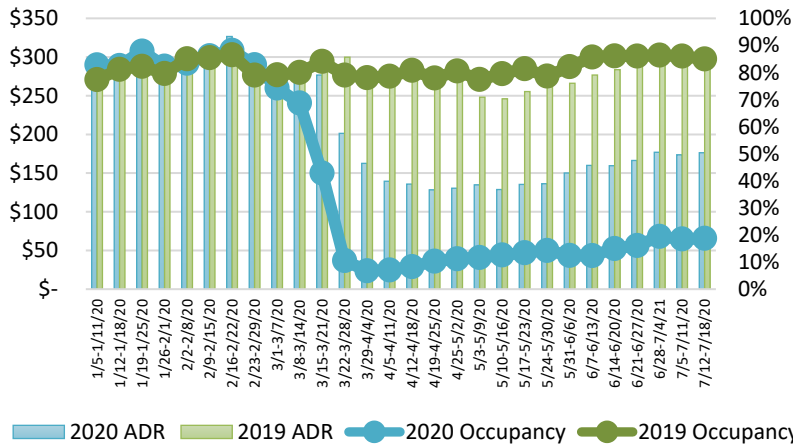
7-Day Domestic by Island Moving Average Daily Passenger Volume

2020 Volume as Percentage of 2019 Volume
Through July 27, 2020



Source: HVCB analysis based on data from DBEDT
Note: Passenger volume figures include both visitors and residents.

State of Hawai'i Hotel Performance by Week - 2020 vs 2019



Source: STR, Inc. © Copyright 2020 Hawai'i Tourism Authority

Hawaii Hotel Performance Info: For the week of July 12 – July 18, 2020

	Occupancy	ADR	RevPAR
State of Hawaii	18.7%	\$ 176.30	\$ 33.05
Oahu	22.0%	\$ 178.81	\$ 39.33
Maui County	9.3%	\$ 207.85	\$ 19.33
Kauai County	17.0%	\$ 190.39	\$ 32.29
Island of Hawaii	22.7%	\$ 133.58	\$ 30.28

Helpful Resources
Department of Health
<https://hawaiiocovid19.com/>

Department of Health
<https://health.hawaii.gov/docd/advisories/novel-coronavirus-2019>

Domestic by Island Month-to-Date and Year-to-Date Daily Passenger Volume

2020 Volume versus 2019 Volume
Through July 27, 2020

July 2020 (Month-to-Date through July 27)

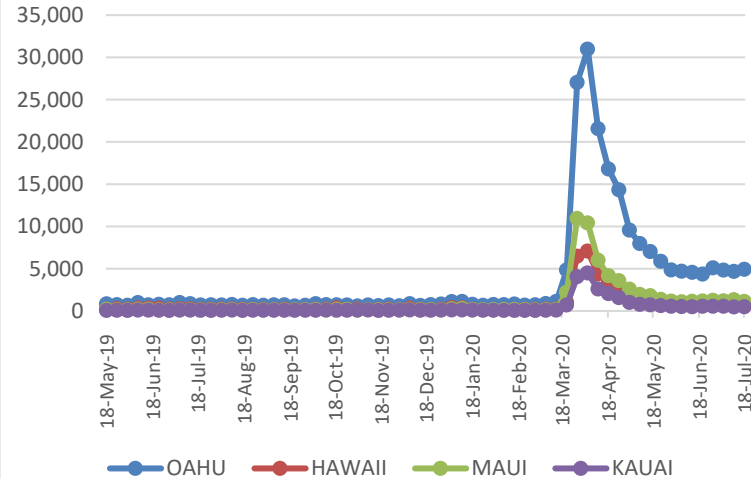
	2020	2019	Volume Change	Percent Change
Honolulu	42,179	395,980	-353,801	-89.3%
Maui County	3,782	209,111	-205,329	-98.2%
Island of Hawai'i	2,768	92,335	-89,567	-97.0%
Kaua'i	574	71,102	-70,528	-99.2%
Total	49,303	768,528	-719,225	-93.6%

2020 (Year-to-Date through July 27)

	2020	2019	Volume Change	Percent Change
Honolulu	1,069,968	2,663,855	-1,593,887	-59.8%
Maui County	448,782	1,298,572	-849,790	-65.4%
Island of Hawai'i	221,735	598,523	-376,788	-63.0%
Kaua'i	150,177	450,730	-300,553	-66.7%
Total	1,890,662	5,011,680	-3,121,018	-62.3%

Source: HVCB analysis based on data from DBEDT
Note: Passenger volume figures include both visitors and residents. Total includes other international passengers. 2020 includes one additional day due to Leap Year (February 29th, 2020).

2020 Initial Weekly Unemployment Claims by Island



Weekly Unemployment Initial Claims: July 18, 2020

State of Hawaii	7,627
C&C of Oahu	4,908
Hawaii County	996
Maui County	1,102
Kauai County	489
Agent (filed in Hawaii against another state)	132

Dept. of Business, Economic Development & Tourism
<https://dbedt.hawaii.gov/economic/covid19/>

News Highlights

July 28, 2020

Hawaii News Now: [Victorino: 'Forget the citations,' arrest quarantine violators instead](#)

Honolulu Star-Advertiser: [Hawaii is included on Japan's list of travel sites](#)

Honolulu Star-Advertiser: [Column: Physical distancing, masks must apply to tourists and locals](#)

Honolulu Star-Advertiser: [State and employers blindsided by jobless surge in Hawaii](#)

West Hawaii Today: [Quarantine quandary: enforcement of state's traveler quarantine becoming strained as passenger counts increase](#)

Honolulu Magazine: [We Tried It: What It's Like at These 6 Popular Oahu Hikes and Gardens During the Pandemic](#)

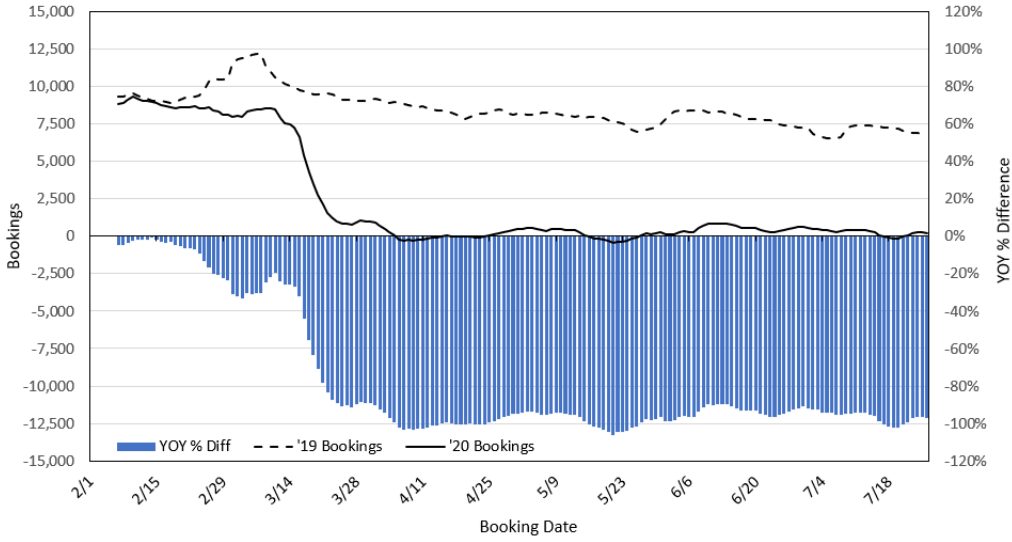
Travel Market Report: [Travel CEOs Lobby for Federal COVID-19 Testing Plan](#)

The Guardian: [Hawaii avoided a coronavirus spike – but its tourist economy is shattered](#)

SF Gate: [In-store dancing leads to Hawaii visitor quarantine arrest](#)

Department of Transportation
<https://hidot.hawaii.gov/coronavirus/>

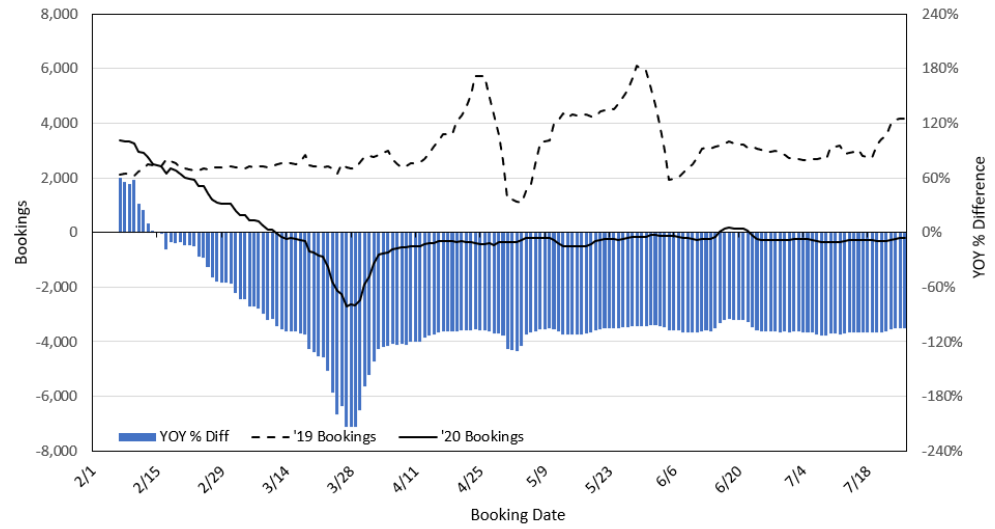
**Travel Agency Bookings to Hawaii for Future Arrivals*
Based on a 7-day Moving Average, 2020 vs 2019
U.S.**



*Future Arrivals refers to all arrivals that are 'future' relative to the referenced booking date.
Source: Global Agency Pro

Update: Jul 26, 2020

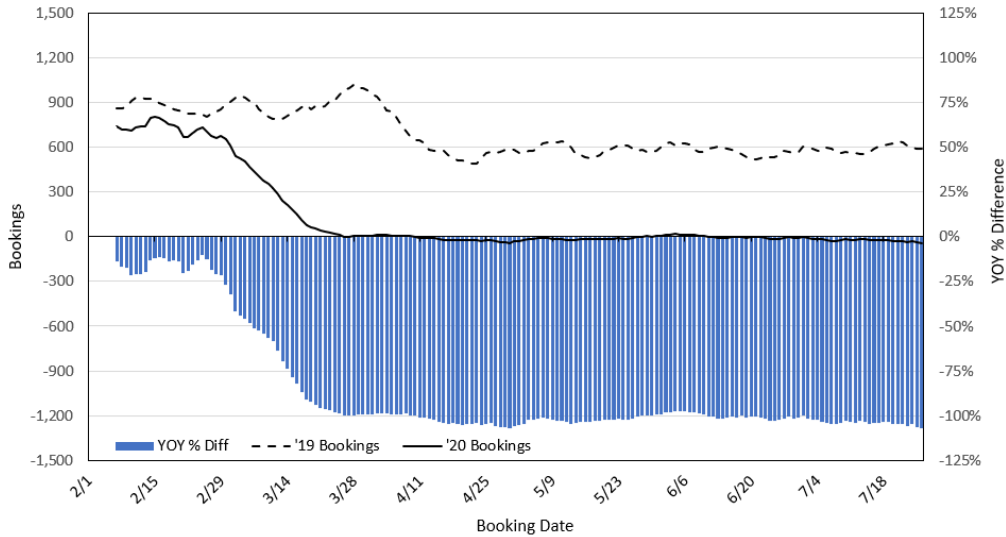
**Travel Agency Bookings to Hawaii for Future Arrivals*
Based on a 7-day Moving Average, 2020 vs 2019
Japan**



*Future Arrivals refers to all arrivals that are 'future' relative to the referenced booking date.
Source: Global Agency Pro

Update: Jul 26, 2020

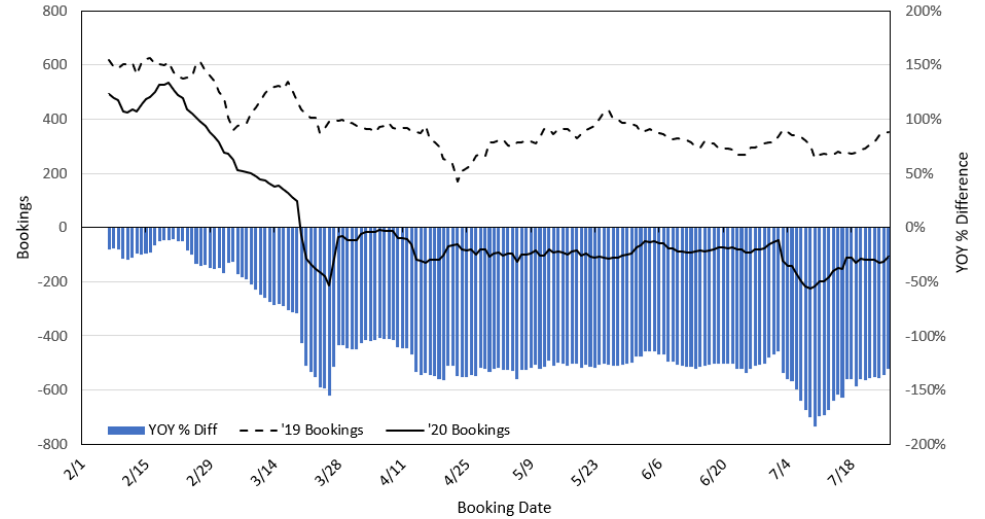
**Travel Agency Bookings to Hawaii for Future Arrivals*
Based on a 7-day Moving Average, 2020 vs 2019
Canada**



*Future Arrivals refers to all arrivals that are 'future' relative to the referenced booking date.
Source: Global Agency Pro

Update: Jul 26, 2020

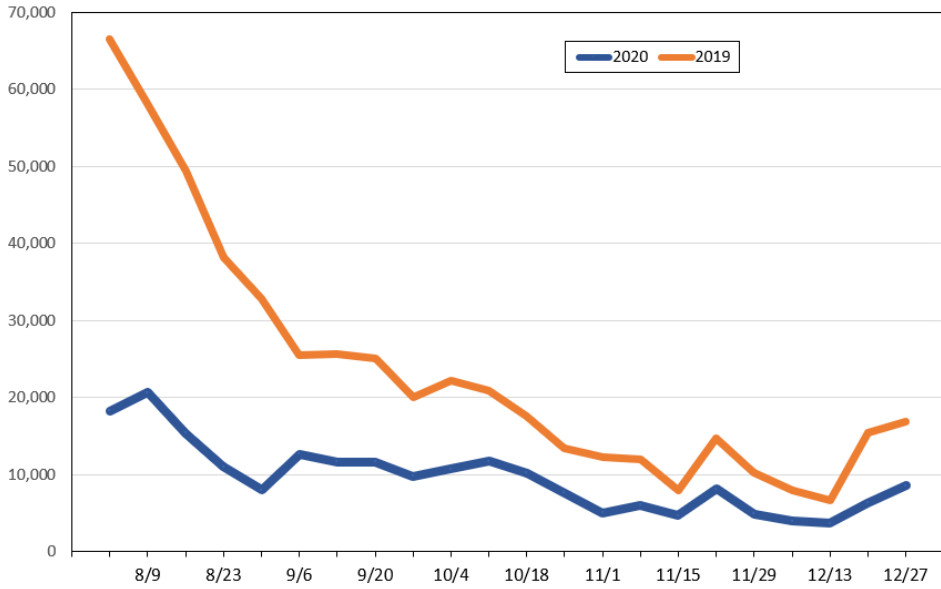
**Travel Agency Bookings to Hawaii for Future Arrivals*
Based on a 7-day Moving Average, 2020 vs 2019
Australia**



*Future Arrivals refers to all arrivals that are 'future' relative to the referenced booking date.
Source: Global Agency Pro

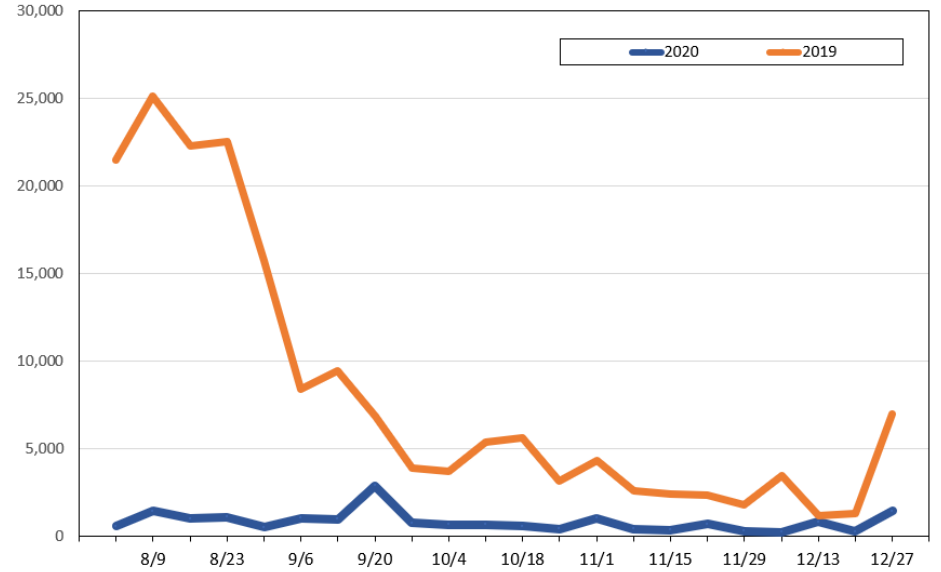
Update: Jul 26, 2020

Travel Agency Weekly Bookings for Future Travel to Hawai'i as of July 26, 2020
U.S.



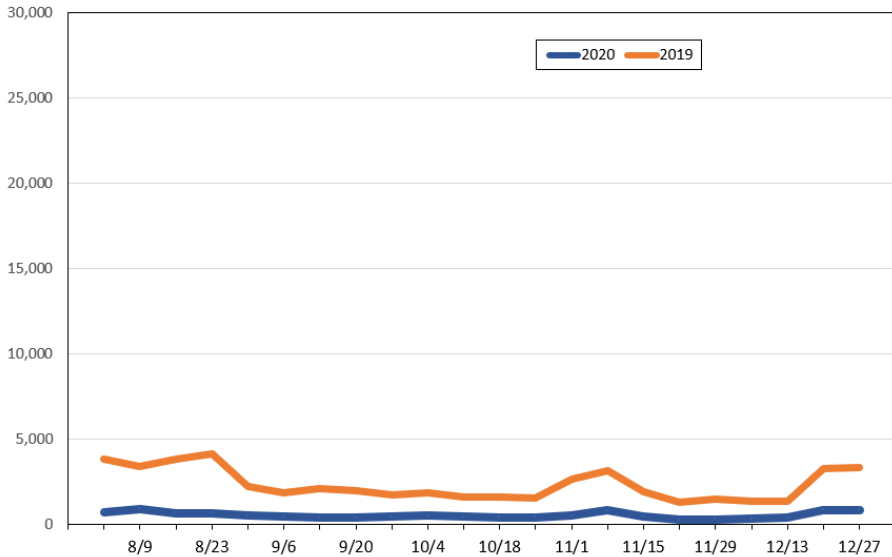
Source: Global Agency Pro, as of July 26, 2020

Travel Agency Weekly Bookings for Future Travel to Hawai'i as of July 26, 2020
Japan



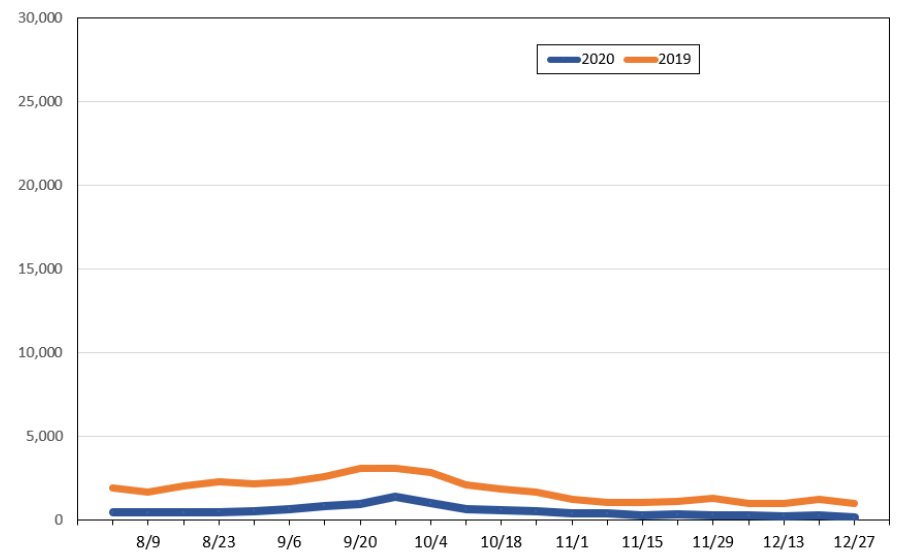
Source: Global Agency Pro, as of July 26, 2020

Travel Agency Weekly Bookings for Future Travel to Hawai'i as of July 26, 2020
Canada



Source: Global Agency Pro, as of July 26, 2020

Travel Agency Weekly Bookings for Future Travel to Hawai'i as of July 26, 2020
Australia



Source: Global Agency Pro, as of July 26, 2020