

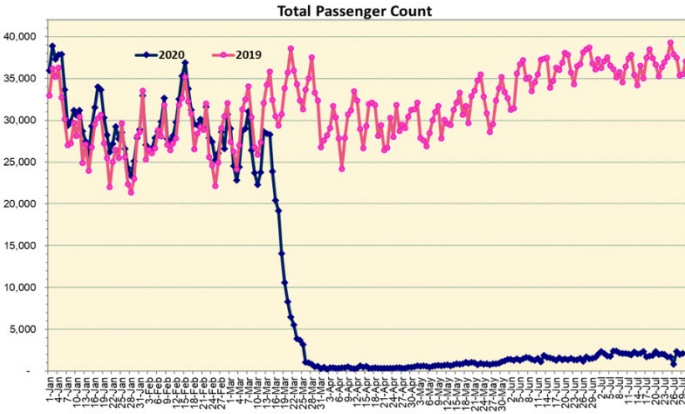
# HTA COVID-19 UPDATE

(Issued: 7/30/20 @ 4:00pm)

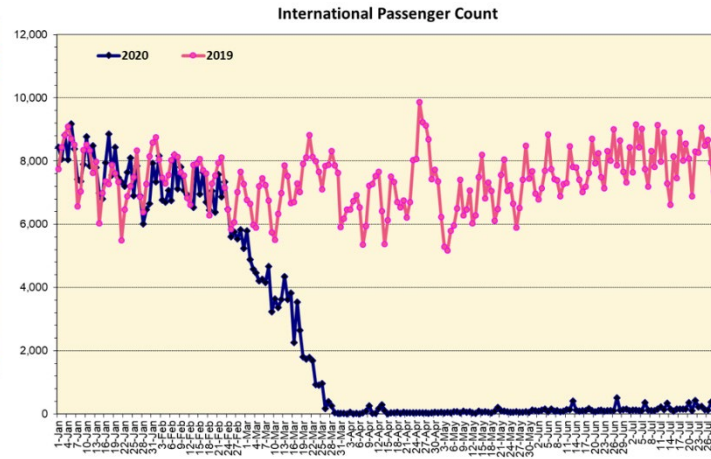
## Novel Coronavirus in Hawaii

COVID-19 Positive\* Cases

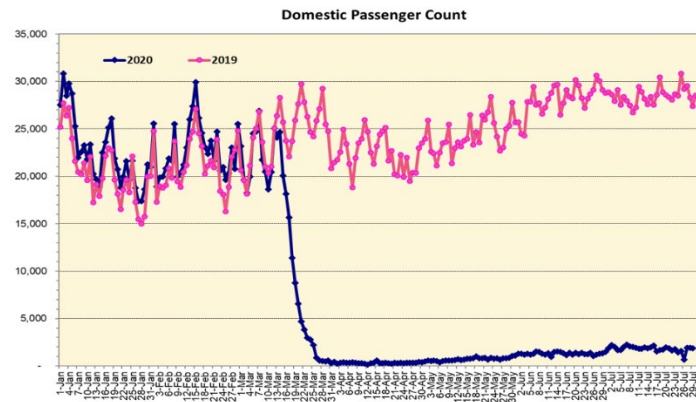
Cumulative totals as of 12:00 noon on July 30, 2020



Note: Excludes flights from Canada



Note: Excludes flights from Canada



### Daily Passenger Count Table

07/29/2020	Domestic	International	Total
Oahu	1665	189	1854
Maui	126		126
Island of Hawaii	105		105
Kauai	0		0
State	1896	189	2085

### 7/30/20 Hawaii Passenger Arrivals by Air Update

Yesterday, 2380 people arrived in Hawaii. This table shows the number of people who arrived by air from out of state yesterday and does not include interisland travel. This data was collected from the Hawaii DOT new Mandatory Travel Declaration Form.

	Kona	Maui	Oahu	Lihue	Total
Crew	6	17	257		280
Transit			204		204
Military			213		213
Exempt			130		130
Relocate to Hawaii	5	8	100		113
Returning Resident	57	81	732		870
Visitor	35	37	498		570
<b>Grand Total</b>	<b>103</b>	<b>143</b>	<b>2134</b>	<b>0</b>	<b>2380</b>
<b>Flights</b>	<b>1</b>	<b>3</b>	<b>22</b>	<b>0</b>	<b>26</b>

Statewide	Total
Total Cases	1989 (124 new)
Released from Isolation†	1226
Required Hospitalization	177
Deaths	26
BY COUNTY	Total
Hawaii County	
Total Cases	115
Released from Isolation†	114
Required Hospitalization	4
Deaths	0
Honolulu County	
Total Cases	1637
Released from Isolation†	944
Required Hospitalization	144
Deaths	19
Kauai County	
Total Cases	47
Released from Isolation†	42
Required Hospitalization	1
Deaths	0
Maui County	
Total Cases	167
Released from Isolation†	126
Required Hospitalization	26
Deaths	6
HI Residents diagnosed outside of HI	23
County Pending	0

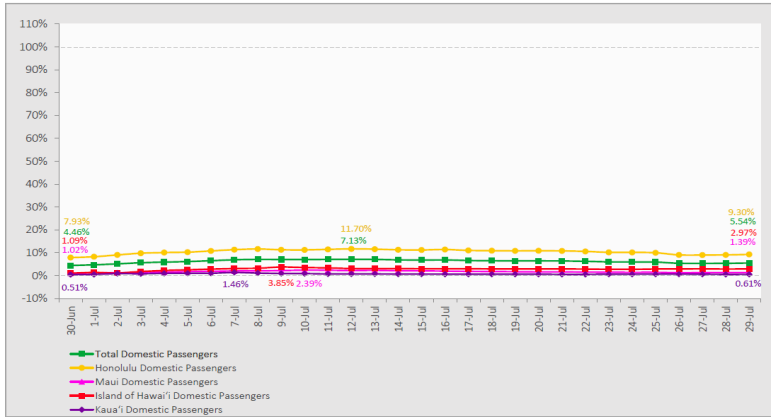
\*includes presumptive and confirmed cases, data are preliminary and subject to change; note that CDC provides case counts according to states of residence.

†Isolation should be maintained until at least 3 days (72 hours) after resolution of fever and myalgia without the use of antipyretics OR at least 7 days have passed since symptom onset, whichever is longer.

Market Impact Update: <https://www.dropbox.com/07/30/20 HTA COVID19 Update>

### 7-Day Domestic by Island Moving Average Daily Passenger Volume

2020 Volume as Percentage of 2019 Volume  
Through July 29, 2020



Source: HVCB analysis based on data from DBEDT  
Note: Passenger volume figures include both visitors and residents.

### Domestic by Island Month-to-Date and Year-to-Date Daily Passenger Volume

2020 Volume versus 2019 Volume  
Through July 29, 2020

July 2020 (Month-to-Date through July 29)

	2020	2019	Volume Change	Percent Change
Honolulu	45,469	426,141	-380,672	-89.3%
Maui County	4,047	224,965	-220,918	-98.2%
Island of Hawai'i	2,981	99,043	-96,062	-97.0%
Kaua'i	613	77,153	-76,540	-99.2%
<b>Total</b>	<b>53,110</b>	<b>827,302</b>	<b>-774,192</b>	<b>-93.6%</b>

2020 (Year-to-Date through July 29)

	2020	2019	Volume Change	Percent Change
Honolulu	1,073,258	2,694,016	-1,620,758	-60.2%
Maui County	449,047	1,314,426	-865,379	-65.8%
Island of Hawai'i	221,948	605,231	-383,283	-63.3%
Kaua'i	150,216	456,781	-306,565	-67.1%
<b>Total</b>	<b>1,894,469</b>	<b>5,070,454</b>	<b>-3,175,985</b>	<b>-62.6%</b>

Source: HVCB analysis based on data from DBEDT  
Note: Passenger volume figures include both visitors and residents. Total includes other international passengers. 2020 includes one additional day due to Leap Year (February 29th, 2020).

## News Highlights

July 30, 2020

**Hawaii News Now:** [After jaw-dropping 109 new coronavirus cases, state considers reinstating mandates](#)

**Hawaii News Now:** [Hotel industry says it's ready for visitors to return to the islands](#)

**KHON2:** [Counties ask residents to rethink leisure travel as conversations continue on reinstating inter-island quarantine](#)

**KITV4:** [Mokulele Airlines adjusts to COVID-19 changes by being flexible with flight schedule](#)

**KITV4:** [Honolulu looks to outlaw large tents at beaches and parks](#)

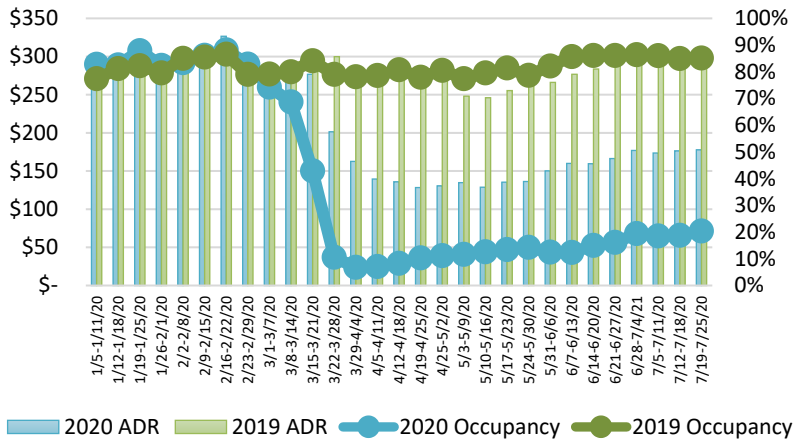
**Maui Now:** [Four Seasons Resort Maui's Monthly Act of Care Supports Employees and Local Business](#)

**Hawaii Public Radio:** [The Latest: 109 New Cases; Teachers Want More DOH Guidance Before Reopening](#)

**The Garden Island:** [Kauai confirms two more COVID-19 cases](#)

**NBC:** [Father, son with COVID-19 forced to quarantine in Hawaii](#)

### State of Hawai'i Hotel Performance by Week - 2020 vs 2019



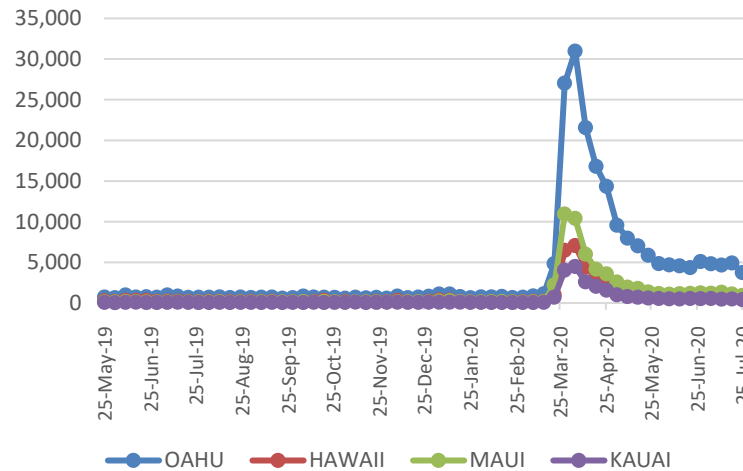
Source: STR, Inc. © Copyright 2020 Hawai'i Tourism Authority

### Hawaii Hotel Performance Info:

For the week of July 19 – July 25, 2020

	Occupancy	ADR	RevPAR
<b>State of Hawaii</b>	20.4%	\$ 177.72	\$ 36.22
<b>Oahu</b>	22.7%	\$ 179.71	\$ 40.85
<b>Maui County</b>	10.2%	\$ 210.55	\$ 21.53
<b>Kauai County</b>	21.0%	\$ 192.55	\$ 40.41
<b>Island of Hawaii</b>	27.9%	\$ 139.99	\$ 39.07

### 2020 Initial Weekly Unemployment Claims by Island



### Weekly Unemployment Initial Claims: July 25, 2020

<b>State of Hawaii</b>	5,919
<b>C&amp;C of Oahu</b>	3,733
<b>Hawaii County</b>	698
<b>Maui County</b>	927
<b>Kauai County</b>	404
<b>Agent (filed in Hawaii against another state)</b>	157

#### Helpful Resources

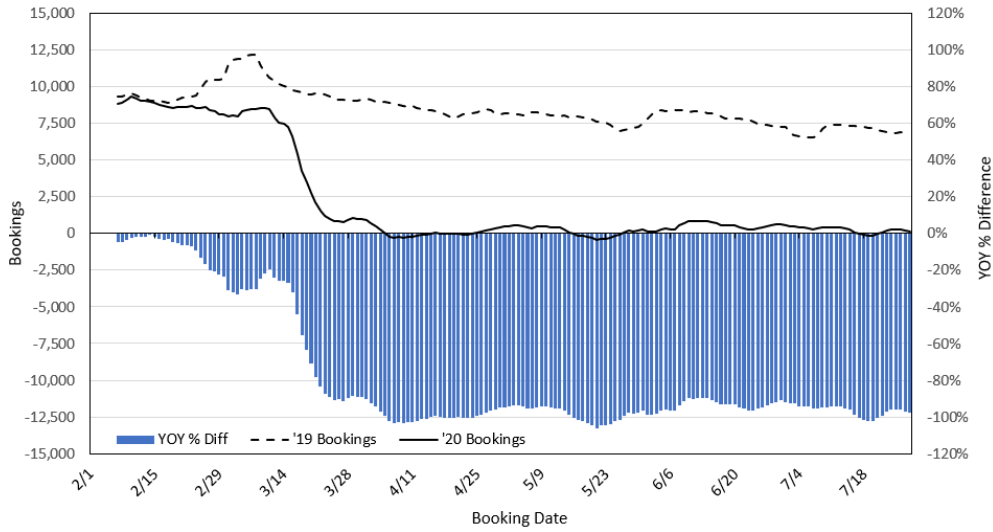
**Department of Health**  
<https://hawaiiocovid19.com/>

**Department of Health**  
<https://health.hawaii.gov/dacd/advisories/novel-coronavirus-2019>

**Dept. of Business, Economic Development & Tourism**  
<https://dbedt.hawaii.gov/economic/covid19/>

**Department of Transportation**  
<https://hidot.hawaii.gov/coronavirus/>

### Travel Agency Bookings to Hawaii for Future Arrivals\* Based on a 7-day Moving Average, 2020 vs 2019 U.S.



\*Future Arrivals refers to all arrivals that are 'future' relative to the referenced booking date.  
Source: Global Agency Pro

Update: Jul 28, 2020

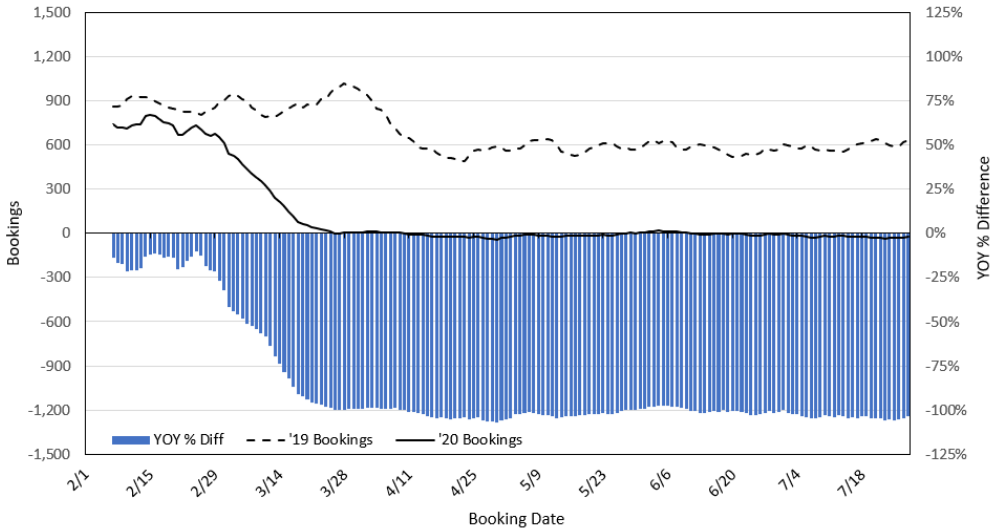
### Travel Agency Bookings to Hawaii for Future Arrivals\* Based on a 7-day Moving Average, 2020 vs 2019 Japan



\*Future Arrivals refers to all arrivals that are 'future' relative to the referenced booking date.  
Source: Global Agency Pro

Update: Jul 28, 2020

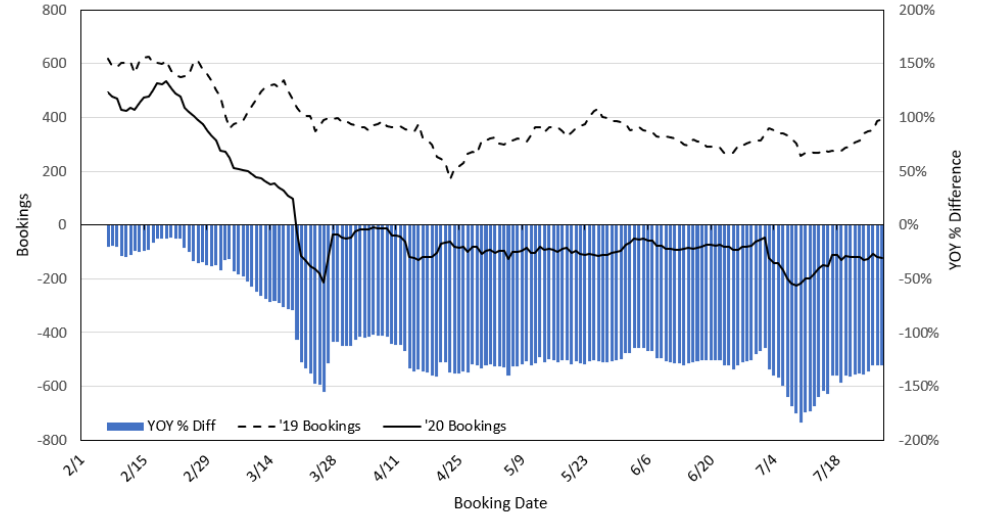
### Travel Agency Bookings to Hawaii for Future Arrivals\* Based on a 7-day Moving Average, 2020 vs 2019 Canada



\*Future Arrivals refers to all arrivals that are 'future' relative to the referenced booking date.  
Source: Global Agency Pro

Update: Jul 28, 2020

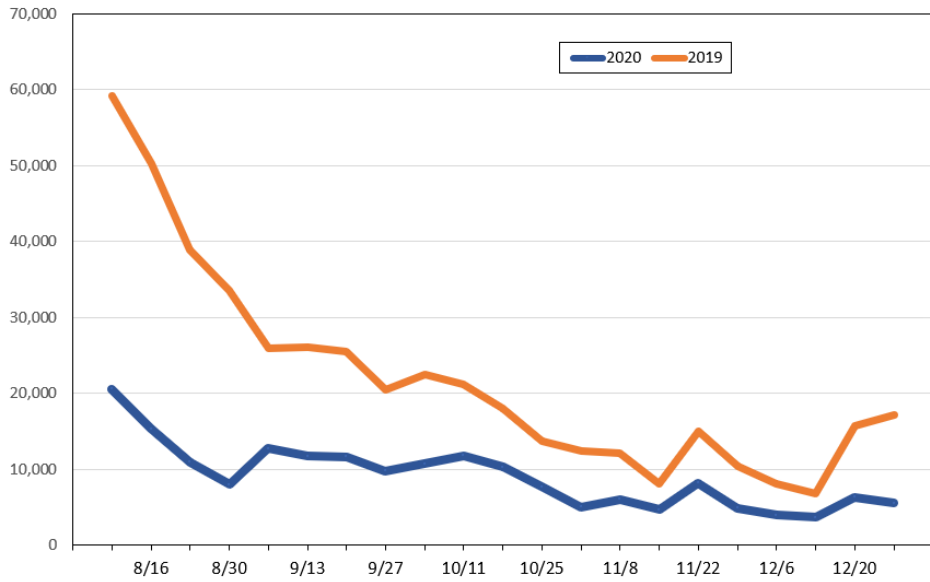
### Travel Agency Bookings to Hawaii for Future Arrivals\* Based on a 7-day Moving Average, 2020 vs 2019 Australia



\*Future Arrivals refers to all arrivals that are 'future' relative to the referenced booking date.  
Source: Global Agency Pro

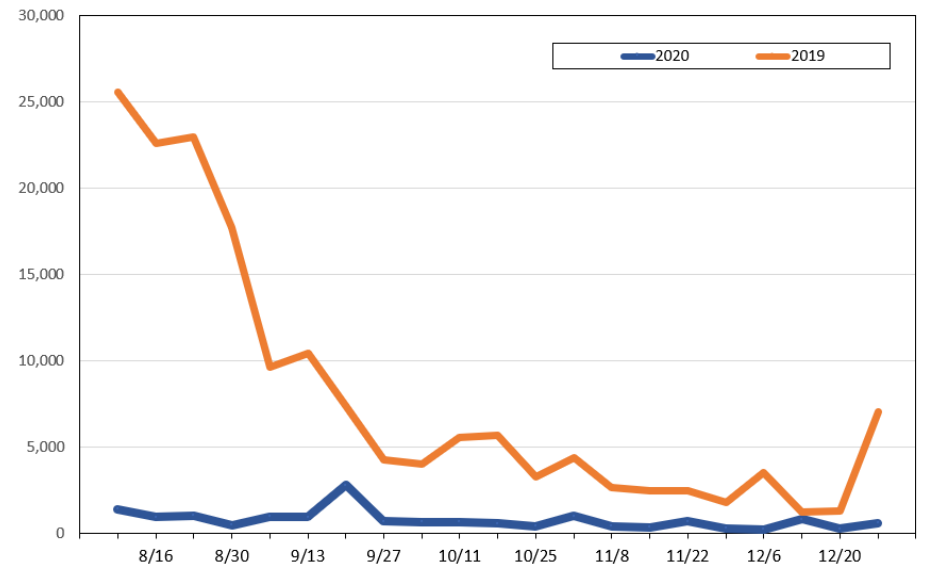
Update: Jul 28, 2020

**Travel Agency Weekly Bookings for Future Travel to Hawai'i as of July 28, 2020**  
U.S.



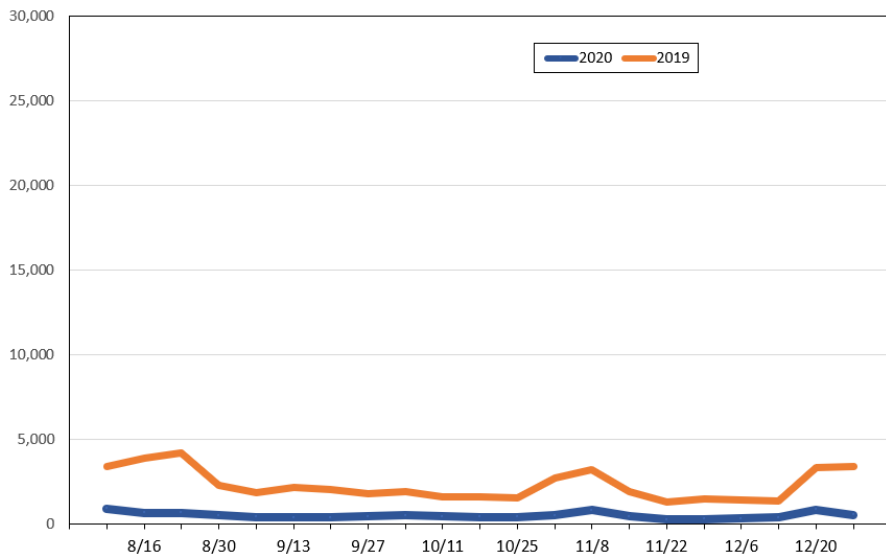
Source: Global Agency Pro, as of July 28, 2020

**Travel Agency Weekly Bookings for Future Travel to Hawai'i as of July 28, 2020**  
Japan



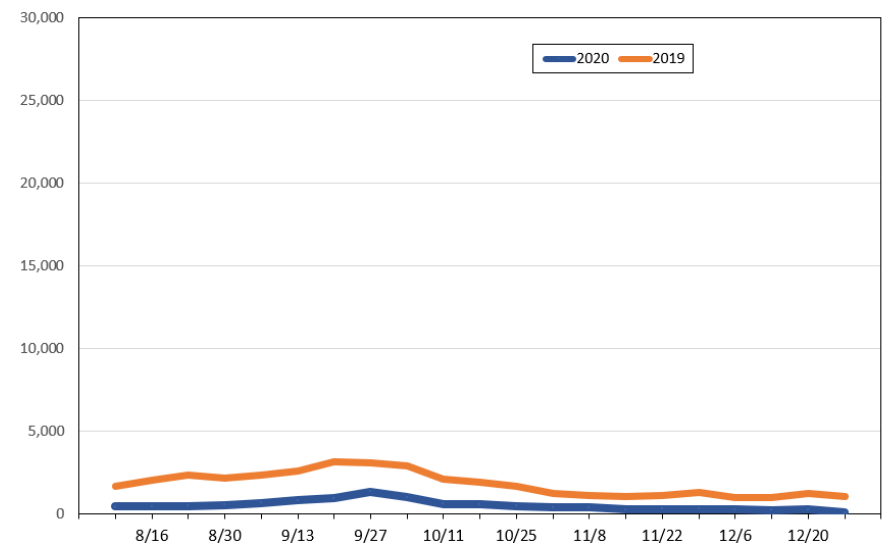
Source: Global Agency Pro, as of July 28, 2020

**Travel Agency Weekly Bookings for Future Travel to Hawai'i as of July 28, 2020**  
Canada



Source: Global Agency Pro, as of July 28, 2020

**Travel Agency Weekly Bookings for Future Travel to Hawai'i as of July 28, 2020**  
Australia



Source: Global Agency Pro, as of July 28, 2020