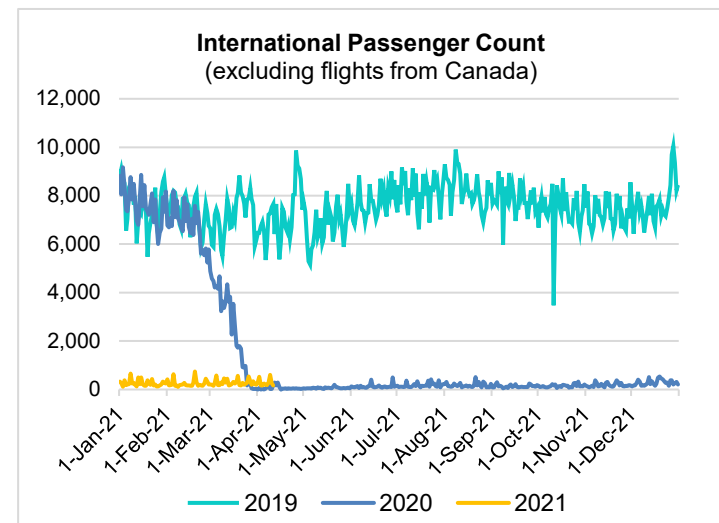
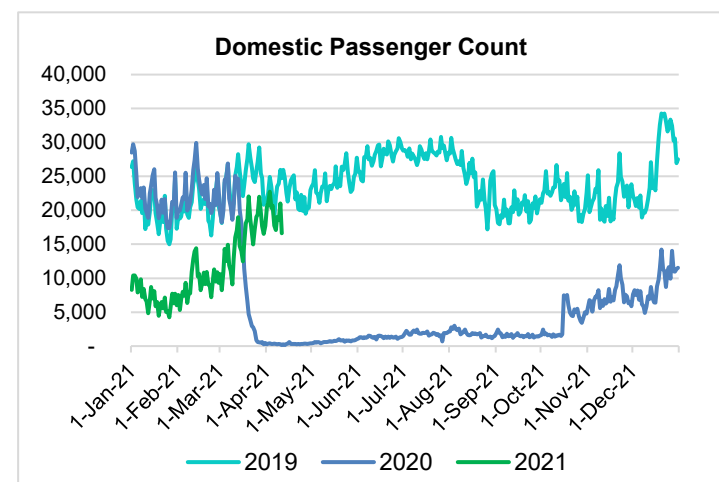
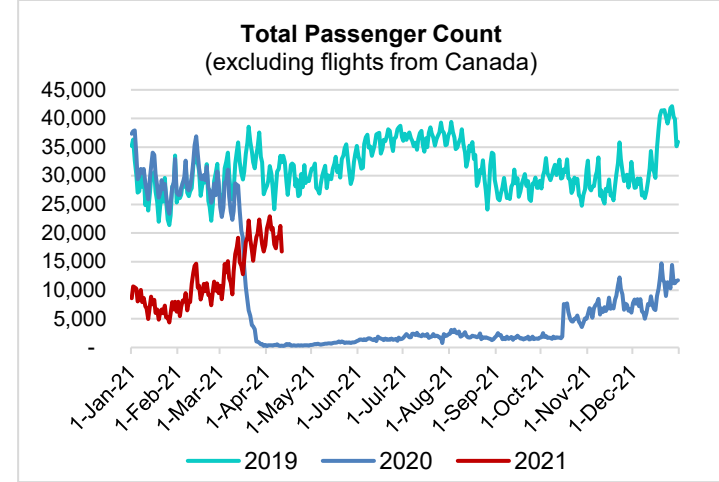


HTA COVID-19 UPDATE

(Issued: 4/12/21 @ 4:30pm)

Reason for Trip by Arrival Airport - Transpacific Screened Passengers as of 04/11/21	Honolulu (HNL)	Kahului (OGG)	Kona (KOA)	Hilo (ITO)	Lihue (LIH)	Grand Total
Airline Crew	531	287	107	0	70	995
Connecting Flight (Transit)	490	30	2	0	3	525
Corporate Meeting	18	13	0	0	1	32
Essential Worker	216	32	18	0	11	277
Honeymoon	38	25	8	0	4	75
Incentive Trip	0	1	0	0	0	1
Intended Resident	75	15	9	0	4	103
Military or Federal Government	146	0	0	0	1	147
Other	62	17	6	0	4	89
Other Business	137	48	21	0	8	214
Pleasure/Vacation	4,931	4,808	1,896	0	888	12,523
Returning Resident	1,443	259	146	0	96	1,944
Sports Event	51	0	0	0	0	51
To Attend School	12	1	1	0	0	14
To Get Married	7	8	0	0	0	15
Visiting Friends or Relatives	892	227	162	0	79	1,360
Grand Total	9,049	5,771	2,376	0	1,169	18,365

Source: Safe Travels program developed by the State of Hawaii Office of Enterprise Technology Services
Note: The data is preliminary and subject to change



Novel Coronavirus in Hawaii

COVID-19 Positive Cases

Cumulative totals as of 12:00pm on April 12, 2021

Total Confirmed Cases	30,571* (87 new)
Hawaii	2,561
Kauai	199
Lanai	111
Maui	3,078†
Molokai	34
Oahu	23,603
Out of State	985
Pending	0
Required Hospitalization	2,039‡
Hawaii Deaths	470
Cases in the past 14 days	1,312*

Footnotes for COVID-19 Cases

*As a result of updated information, one case on Oahu was removed from the counts.

**Using cases reported in the past 14 days provides a rough approximation of the number of cases currently meeting criteria for isolation. This proxy number for "active cases" resolves classification issues for cases unable to be reached or who are out of jurisdiction, for whom precise release from isolation date may not be possible to determine. It is also not influenced by lags in data entry. (This total does not include Hawaii residents diagnosed outside of Hawaii)

†One case is a Lanai resident whose exposure is on Maui Island and who will be remaining on Maui Island for the interim.

‡Includes Hawaii residents hospitalized out of state.

§Includes cases that meet isolation release criteria (Isolation should be maintained until at least 24 hours after resolution of fever and myalgia without the use of antipyretics OR at least 10 days have passed since symptom onset, whichever is longer). (The cases that have died and one case that has left the jurisdiction have been removed from these counts). Positive cases include confirmed cases, and Hawaii residents and non-residents; data are preliminary and subject to change. Note that CDC provides case counts according to states of residence.

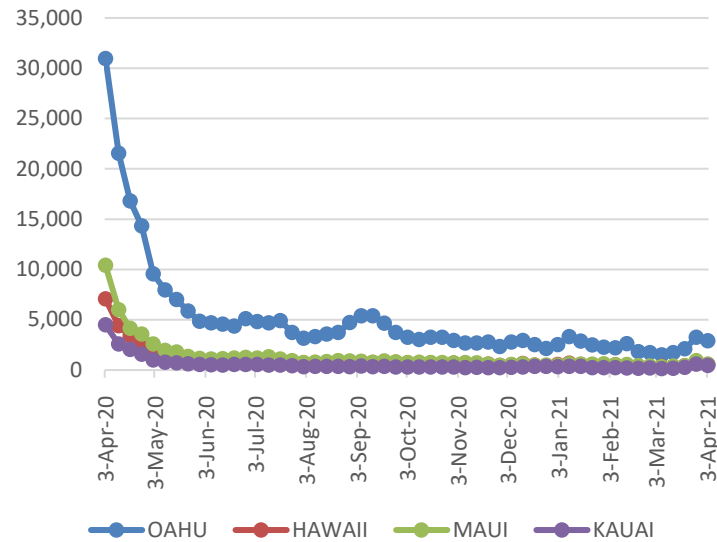
April 11 (Sun)*

	Domestic flights to						Int'l flights from		
	Total	Total,D	Oahu	Maui	Big isl	Kauai	Total,I	Japan	Others
2021	16,768	16,606	8,423	5,181	2,165	837	162	0	162
2020	319	152	124	5	23	0	167	0	167
2019	32,379	24,718	13,517	6,440	2,814	1,947	7,661	4,535	3,126
2018	29,269	21,389	11,413	5,550	2,349	2,077	7,880	4,655	3,225

April (daily avg.)*

	Domestic flights to						Int'l flights from		
	Total	Total,D	Oahu	Maui	Big isl	Kauai	Total,I	Japan	Others
2021	19,867	19,583	9,893	6,323	2,582	784	284	78	206
2020	368	305	234	30	31	10	63	9	54
2019	29,723	22,984	12,176	6,200	2,708	1,900	6,739	4,059	2,680
2018	28,351	21,378	11,001	5,675	2,526	2,177	6,973	4,205	2,768

2021 Initial Weekly Unemployment Claims by Island



Weekly Unemployment Initial Claims: April 3, 2021

State of Hawaii	4,602
C&C of Oahu	2,913
Honolulu	1,318
Kaneohe	284
Waipahu	1,311
Hawaii County	540
Hilo	272
Kona	268
Maui County	593
Wailuku	580
Molokai	13
Kauai County	437
Agent (filed in Hawaii against another state)	119

Comparison with 2019, a pre-COVID 19 year* (Index with passengers on the same day in 2019=100)



News Highlights

April 12, 2021

Honolulu Star Advertiser: [Health officials worried double-mutant COVID-19 strain could make its way to Hawaii](#)

KHON2: [Coronavirus vaccines available for Oahu residents 50 years and older](#)

Hawaii News Now: [‘Stop the theft of Hawaiian culture’: Opposition rises as state plans to cut tourism funds](#)

West Hawaii Today: [‘We are seeing good progress’: Over 10,000 doses administered via Kona mega clinics](#)

Big Island Now: [Six New Cases On Big Island](#)

Forbes: [Hawaii’s Vaccine Passport Is Slated To Roll Out By Summer](#)

The Points Guy: [Maui COVID-19 travel restrictions: What you need to know about requirements to visit this Hawaiian island](#)

USA Today: [Hawaii details plans for COVID-19 vaccine ‘passport’ for travelers](#)

eTurbo News: [How Global Tourism will Recover: A Lesson from Hawaii](#)

Helpful Resources

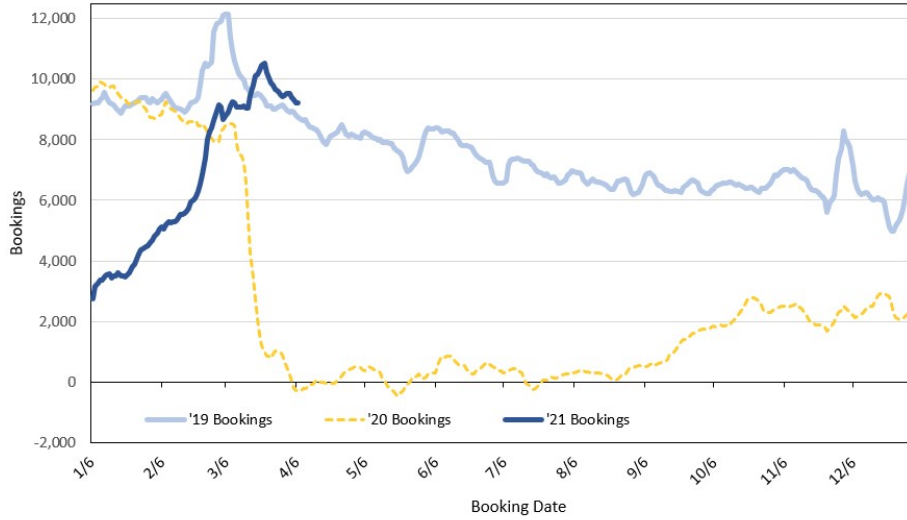
Department of Health
<https://hawaiiicovid19.com/>

Hawaii Tourism Authority
<https://www.hawaiitourismauthority.org/covid-19-updates/>

Dept. of Business, Economic Development & Tourism
<https://dbedt.hawaii.gov/economic/covid19/>

Department of Transportation
<https://hidot.hawaii.gov/coronavirus/>

**Travel Agency Bookings to Hawaii for Future Arrivals*
Based on a 7-day Moving Average as of April 10, 2021
U.S.**



*Future Arrivals refers to all 'future' arrivals relative to a given Booking Date.
Source: Global Agency Pro

Update: Apr 10, 2021

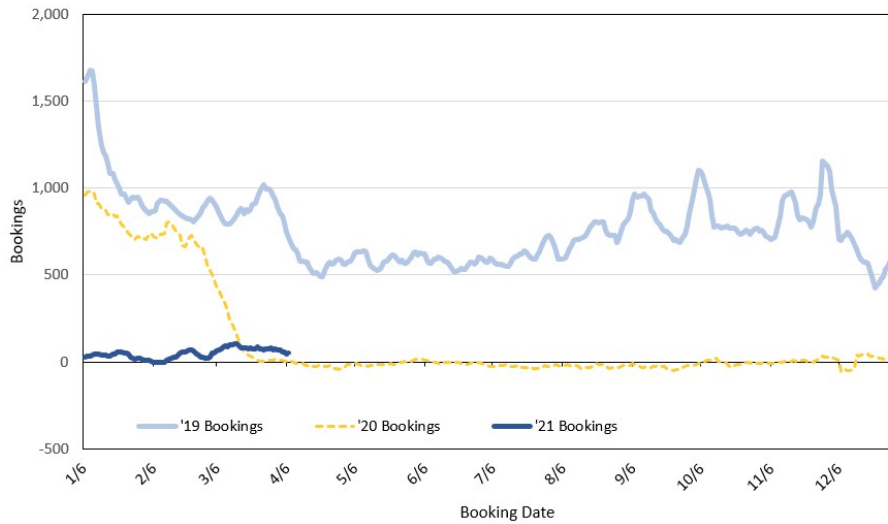
**Travel Agency Bookings to Hawaii for Future Arrivals*
Based on a 7-day Moving Average as of April 10, 2021
Japan**



*Future Arrivals refers to all 'future' arrivals relative to a given Booking Date.
Source: Global Agency Pro

Update: Apr 10, 2021

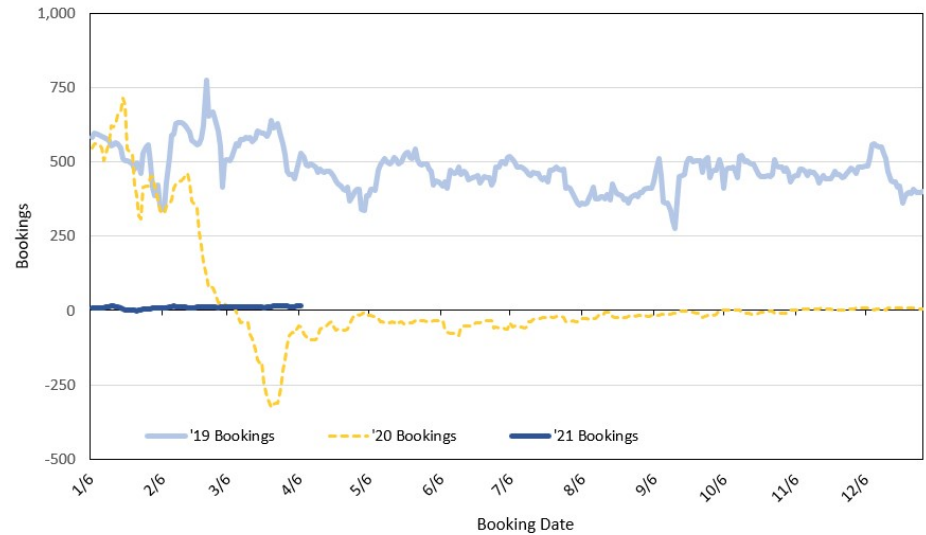
**Travel Agency Bookings to Hawaii for Future Arrivals*
Based on a 7-day Moving Average as of April 10, 2021
Canada**



*Future Arrivals refers to all 'future' arrivals relative to a given Booking Date.
Source: Global Agency Pro

Update: Apr 10, 2021

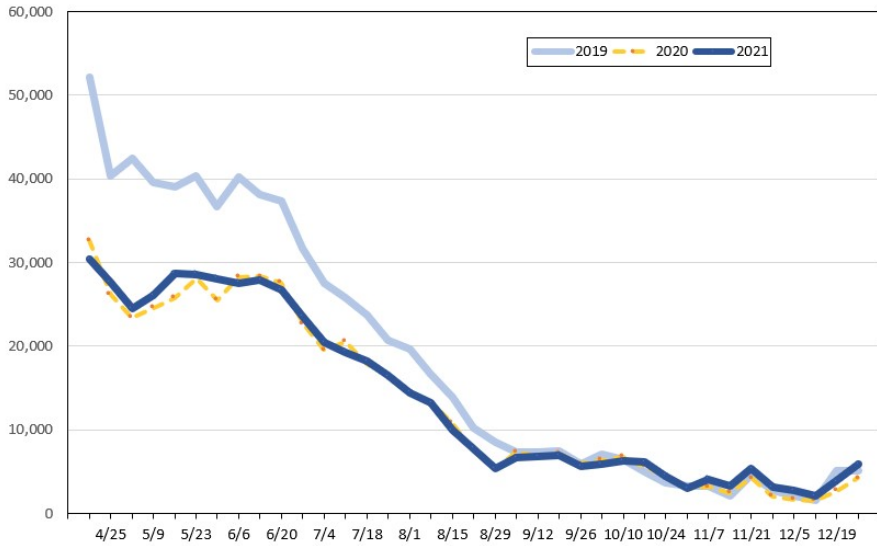
**Travel Agency Bookings to Hawaii for Future Arrivals*
Based on a 7-day Moving Average as of April 10, 2021
Korea**



*Future Arrivals refers to all 'future' arrivals relative to a given Booking Date.
Source: Global Agency Pro

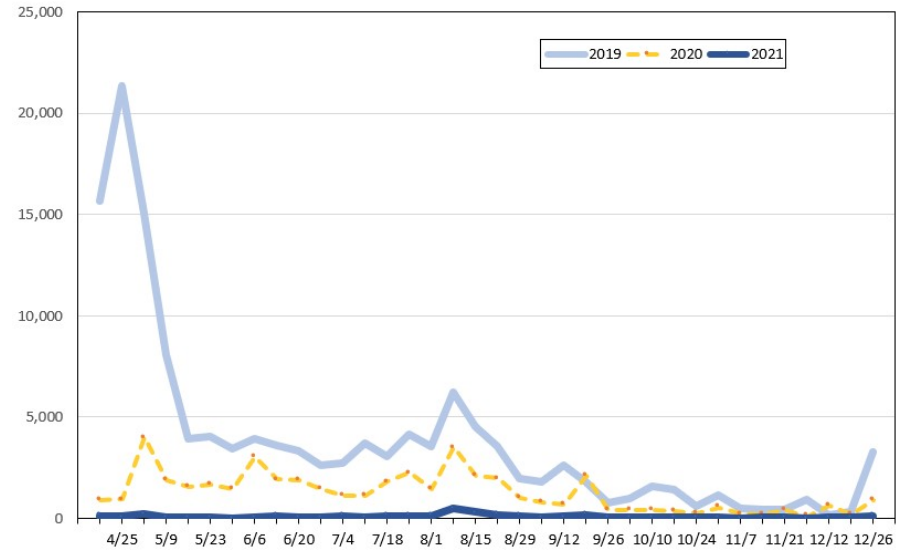
Update: Apr 10, 2021

Travel Agency Weekly Bookings for Future Travel to Hawai'i as of April 10, 2021
U.S.



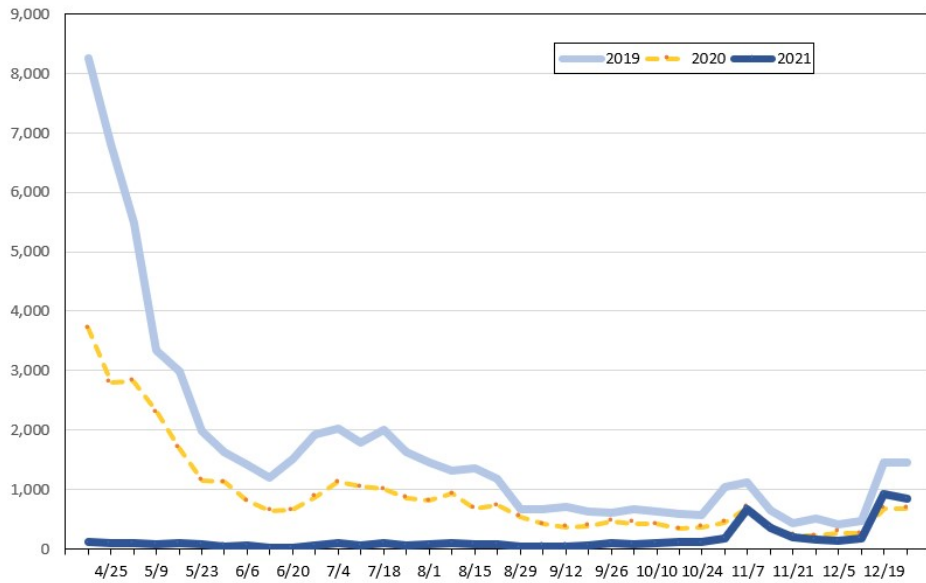
Source: Global Agency Pro, as of April 10, 2021

Travel Agency Weekly Bookings for Future Travel to Hawai'i as of April 10, 2021
Japan



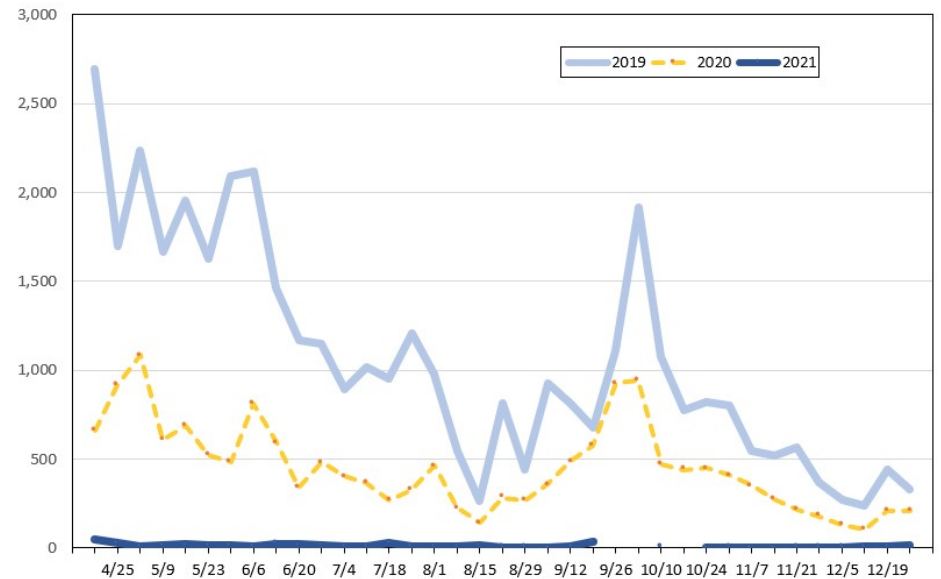
Source: Global Agency Pro, as of April 10, 2021

Travel Agency Weekly Bookings for Future Travel to Hawai'i as of April 10, 2021
Canada



Source: Global Agency Pro, as of April 10, 2021

Travel Agency Weekly Bookings for Future Travel to Hawai'i as of April 10, 2021
Korea



Source: Global Agency Pro, as of April 10, 2021