

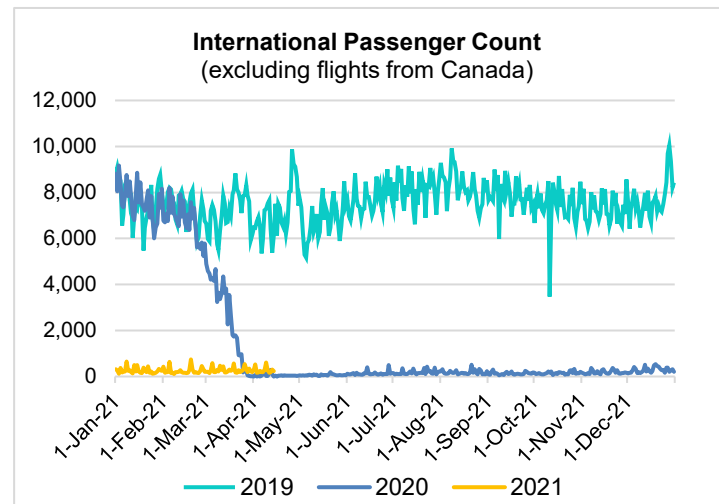
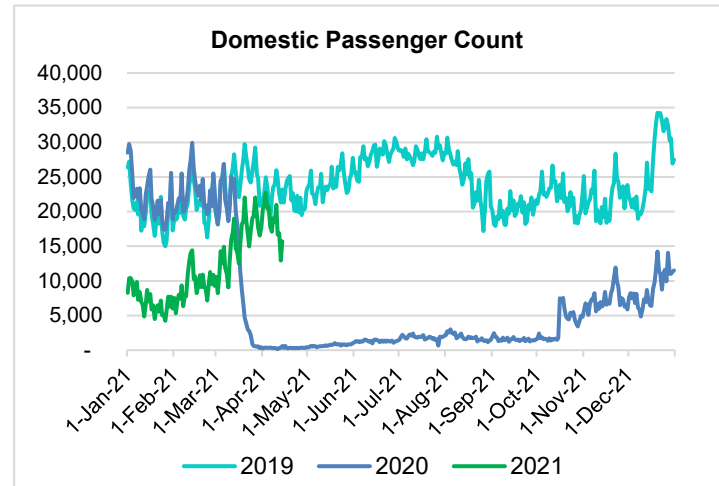
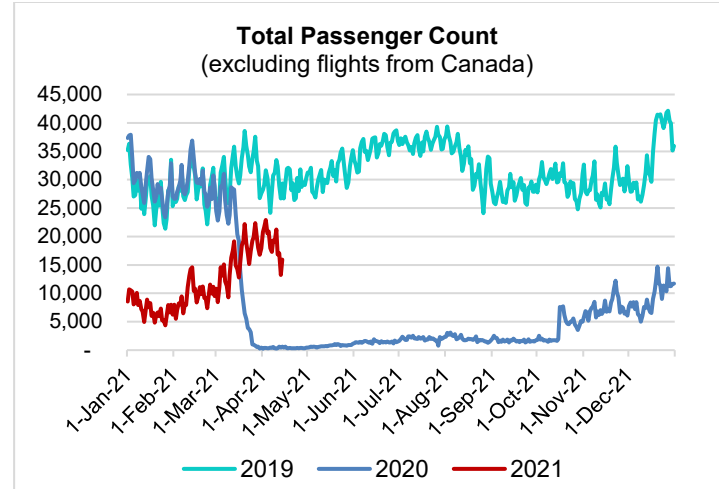
# HTA COVID-19 UPDATE

(Issued: 4/15/21 @ 4:30pm)

Reason for Trip by Arrival Airport - Transpacific Screened Passengers as of 04/14/21	Honolulu (HNL)	Kahului (OGG)	Kona (KOA)	Hilo (ITO)	Lihue (LIH)	Grand Total
Airline Crew	491	257	113	0	49	910
Connecting Flight (Transit)	546	40	8	0	1	595
Corporate Meeting	7	6	5	0	2	20
Essential Worker	94	27	11	0	4	136
Honeymoon	22	18	5	0	2	47
Incentive Trip	4	5	1	0	0	10
Intended Resident	84	19	29	0	1	133
Military or Federal Government	106	0	0	0	1	107
Other	68	26	14	0	3	111
Other Business	100	24	17	0	11	152
Pleasure/Vacation	5,509	4,340	1,434	0	613	11,896
Returning Resident	958	215	162	0	52	1,387
Sports Event	40	0	0	0	0	40
To Attend School	7	1	3	0	0	11
To Get Married	12	4	2	0	0	18
Visiting Friends or Relatives	1,535	334	268	0	89	2,226
<b>Grand Total</b>	<b>9,583</b>	<b>5,316</b>	<b>2,072</b>	<b>0</b>	<b>828</b>	<b>17,799</b>

Source: Safe Travels program developed by the State of Hawaii Office of Enterprise Technology Services

Note: The data is preliminary and subject to change



## Novel Coronavirus in Hawaii

### COVID-19 Positive Cases

Cumulative totals as of 12:00pm on April 15, 2021

Total Confirmed Cases	31,075* (98 new)
Hawaii	2,618
Kauai	199
Lanai	111
Maui	3,188†
Molokai	35
Oahu	23,928
Out of State	996
Pending	0
Required Hospitalization	2,067‡
Hawaii Deaths	473
Cases in the past 14 days	1,242*

### Footnotes for COVID-19 Cases

\*As a result of updated information, two cases on Oahu and one case on Maui were removed from the counts.

\*\*Using cases reported in the past 14 days provides a rough approximation of the number of cases currently meeting criteria for isolation. This proxy number for "active cases" resolves classification issues for cases unable to be reached or who are out of jurisdiction, for whom precise release from isolation date may not be possible to determine. It is also not influenced by lags in data entry. (This total does not include Hawaii residents diagnosed outside of Hawaii)

†One case is a Lanai resident whose exposure is on Maui Island and who will be remaining on Maui Island for the interim.

‡Includes Hawaii residents hospitalized out of state.

§Includes cases that meet isolation release criteria (Isolation should be maintained until at least 24 hours after resolution of fever and myalgia without the use of antipyretics OR at least 10 days have passed since symptom onset, whichever is longer). (The cases that have died and one case that has left the jurisdiction have been removed from these counts). Positive cases include confirmed cases, and Hawaii residents and non-residents; data are preliminary and subject to change. Note that CDC provides case counts according to states of residence.

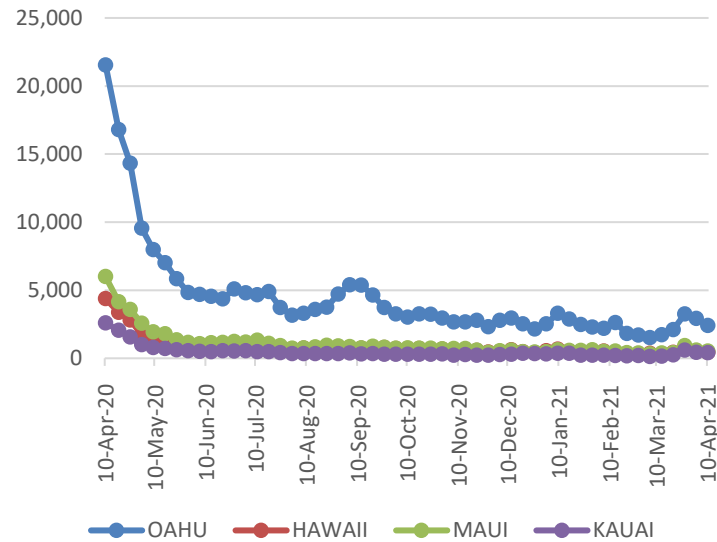
### April 14 (Wed)\*

	Domestic flights to						Int'l flights from		
	Total	Total,D	Oahu	Maui	Big isl	Kauai	Total,I	Japan	Others
2021	15,968	15,729	8,656	4,768	1,929	376	239	0	239
2020	604	601	540	37	0	24	3	0	3
2019	29,324	23,191	12,873	6,048	2,546	1,724	6,133	4,149	1,984
2018	27,174	20,608	11,343	5,258	2,024	1,983	6,566	4,260	2,306

### April (daily avg.)\*

	Domestic flights to						Int'l flights from		
	Total	Total,D	Oahu	Maui	Big isl	Kauai	Total,I	Japan	Others
2021	18,921	18,645	9,509	5,941	2,448	747	275	68	207
2020	407	329	263	29	27	11	77	7	70
2019	29,421	22,845	12,210	6,131	2,663	1,842	6,576	4,024	2,552
2018	28,058	21,188	11,048	5,601	2,439	2,100	6,870	4,186	2,685

### 2021 Initial Weekly Unemployment Claims by Island



## News Highlights

April 15, 2021

**KHON2:** [Hawaii residents weigh in on coronavirus vaccine exemptions for travelers](#)

**KITV4:** [CDC reports 5,800 Covid infections in fully vaccinated people](#)

**MidWeek:** [Malama Is The Way](#)

**Pacific Business News:** [Maui residents call for tourism management, beach access](#)

**Hawaii Tribune-Herald:** [J&J vaccine to remain in limbo while officials seek evidence](#)

**The Maui News:** [Department of Health vaccine appointments going unfilled on Maui](#)

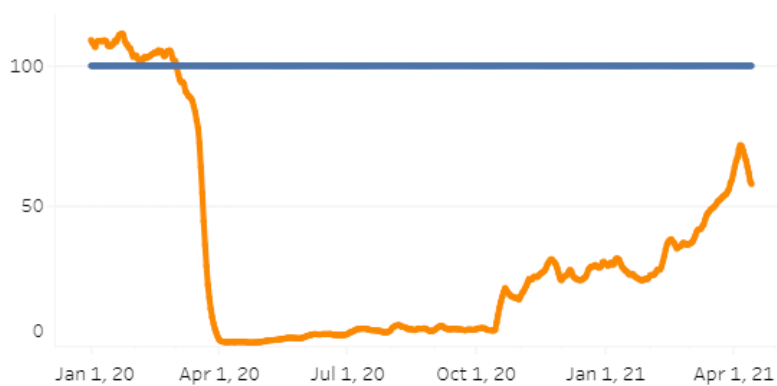
**West Hawaii Today:** [Big Island COVID-19 case count increases by 15](#)

**Los Angeles Magazine:** [Escape to Hawaii: A Guide to Hawaii's Best Hotels and Resorts](#)

**Smart Meetings:** [Can Planners Insist on Vaccine Passports...or Not?](#)

**TravelAge West:** [What to Expect When Visiting Dolphin Touch, a Unique Kauai Wellness Experience](#)

### Comparison with 2019, a pre-COVID 19 year\* (Index with passengers on the same day in 2019=100)



### Weekly Unemployment Initial Claims: April 10, 2021

<b>State of Hawaii</b>	<b>3,922</b>
<b>C&amp;C of Oahu</b>	<b>2,405</b>
Honolulu	1,093
Kaneohe	238
Waipahu	1,074
<b>Hawaii County</b>	<b>443</b>
Hilo	233
Kona	210
<b>Maui County</b>	<b>524</b>
Wailuku	504
Molokai	20
<b>Kauai County</b>	<b>414</b>
<b>Agent</b> (filed in Hawaii against another state)	136

#### Helpful Resources

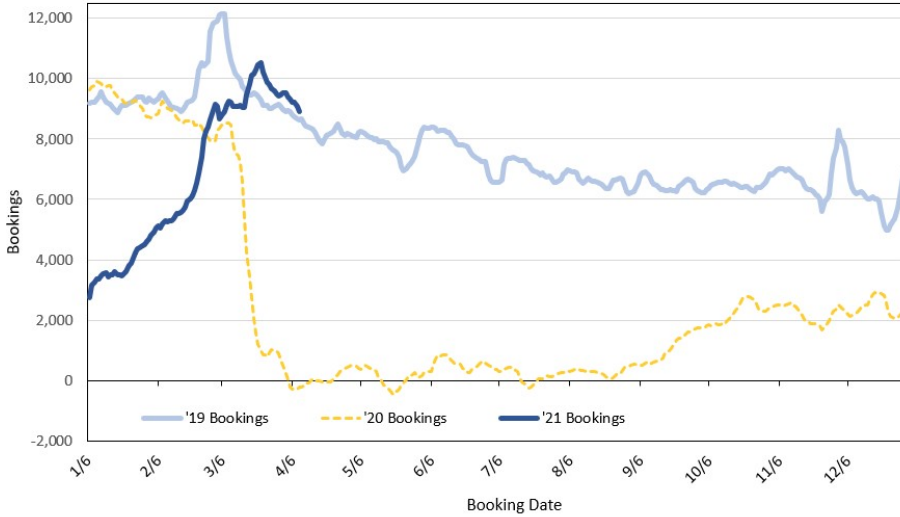
**Department of Health**  
<https://hawaiiicovid19.com/>

**Hawaii Tourism Authority**  
<https://www.hawaiitourismauthority.org/covid-19-updates/>

**Dept. of Business, Economic Development & Tourism**  
<https://dbedt.hawaii.gov/economic/covid19/>

**Department of Transportation**  
<https://hidot.hawaii.gov/coronavirus/>

**Travel Agency Bookings to Hawaii for Future Arrivals\*  
Based on a 7-day Moving Average as of April 13, 2021  
U.S.**



\*Future Arrivals refers to all 'future' arrivals relative to a given Booking Date.  
Source: Global Agency Pro

Update: Apr 13, 2021

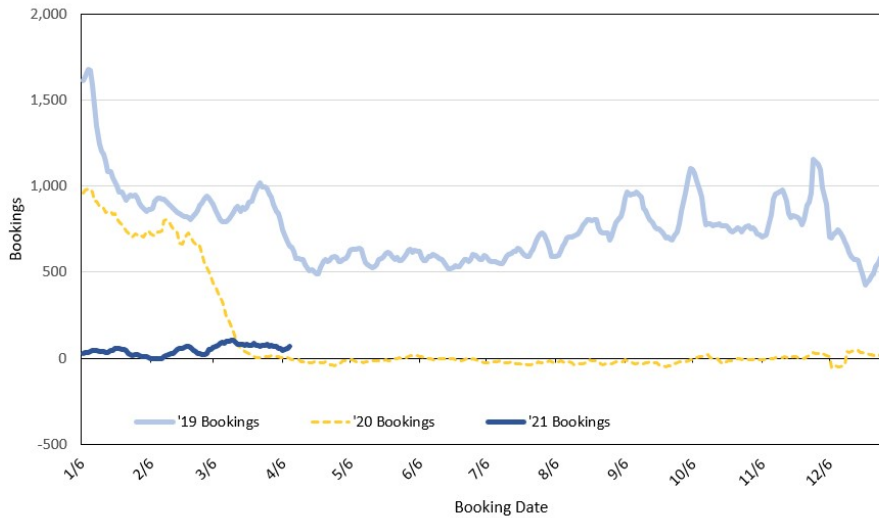
**Travel Agency Bookings to Hawaii for Future Arrivals\*  
Based on a 7-day Moving Average as of April 13, 2021  
Japan**



\*Future Arrivals refers to all 'future' arrivals relative to a given Booking Date.  
Source: Global Agency Pro

Update: Apr 13, 2021

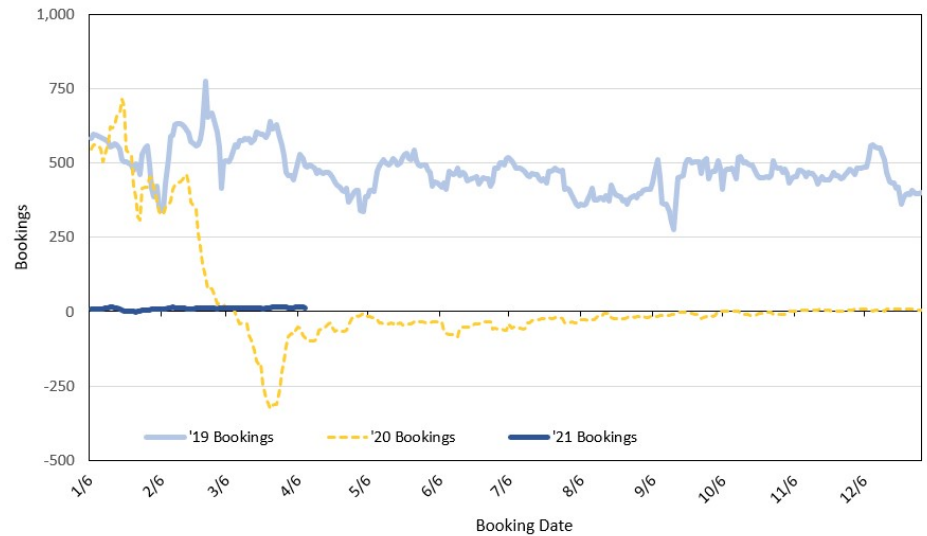
**Travel Agency Bookings to Hawaii for Future Arrivals\*  
Based on a 7-day Moving Average as of April 13, 2021  
Canada**



\*Future Arrivals refers to all 'future' arrivals relative to a given Booking Date.  
Source: Global Agency Pro

Update: Apr 13, 2021

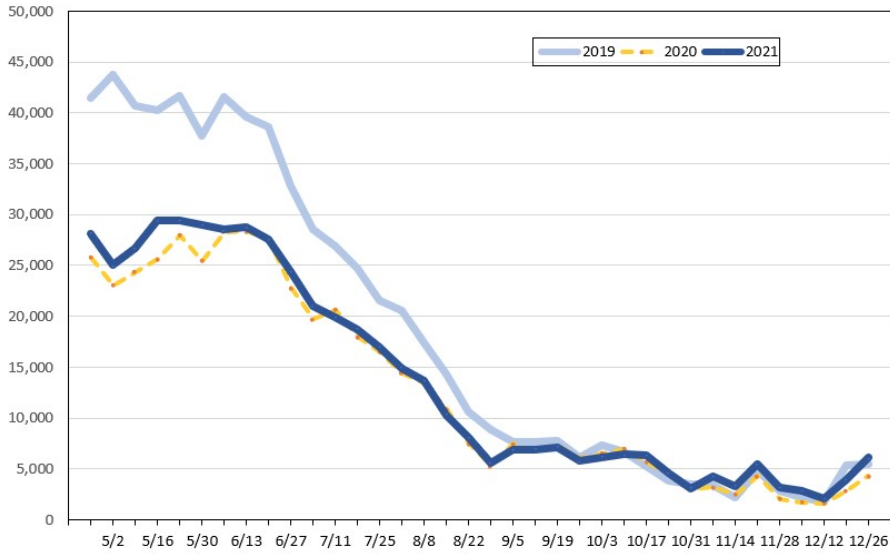
**Travel Agency Bookings to Hawaii for Future Arrivals\*  
Based on a 7-day Moving Average as of April 13, 2021  
Korea**



\*Future Arrivals refers to all 'future' arrivals relative to a given Booking Date.  
Source: Global Agency Pro

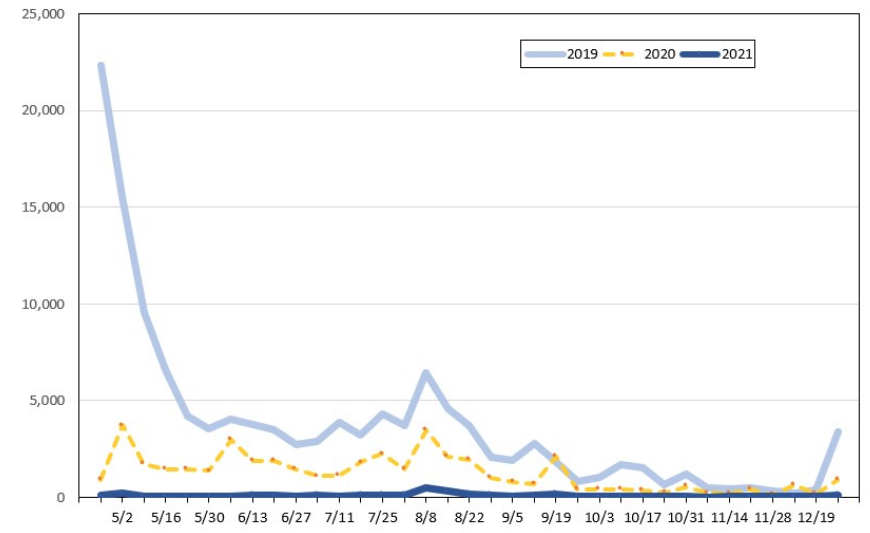
Update: Apr 13, 2021

**Travel Agency Weekly Bookings for Future Travel to Hawai'i as of April 13, 2021**  
U.S.



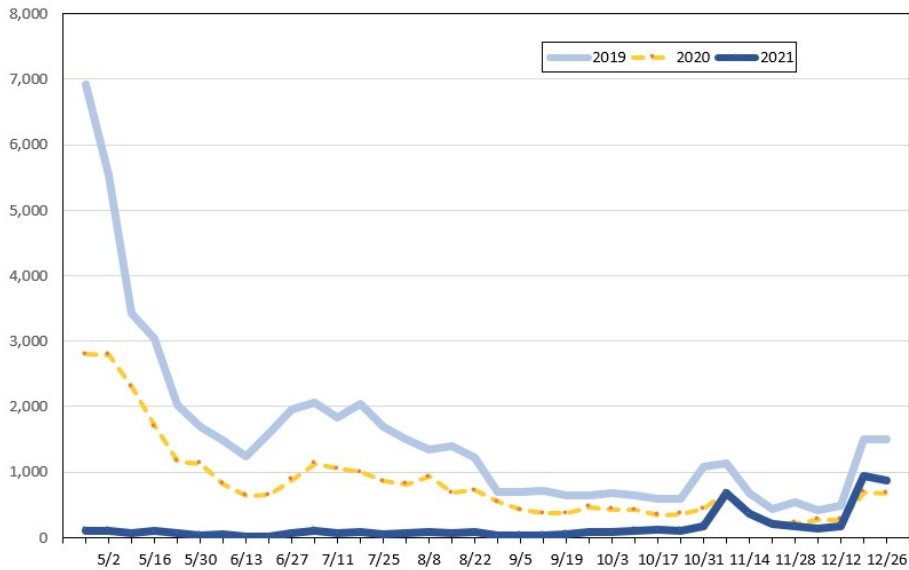
Source: Global Agency Pro, as of April 13, 2021

**Travel Agency Weekly Bookings for Future Travel to Hawai'i as of April 13, 2021**  
Japan



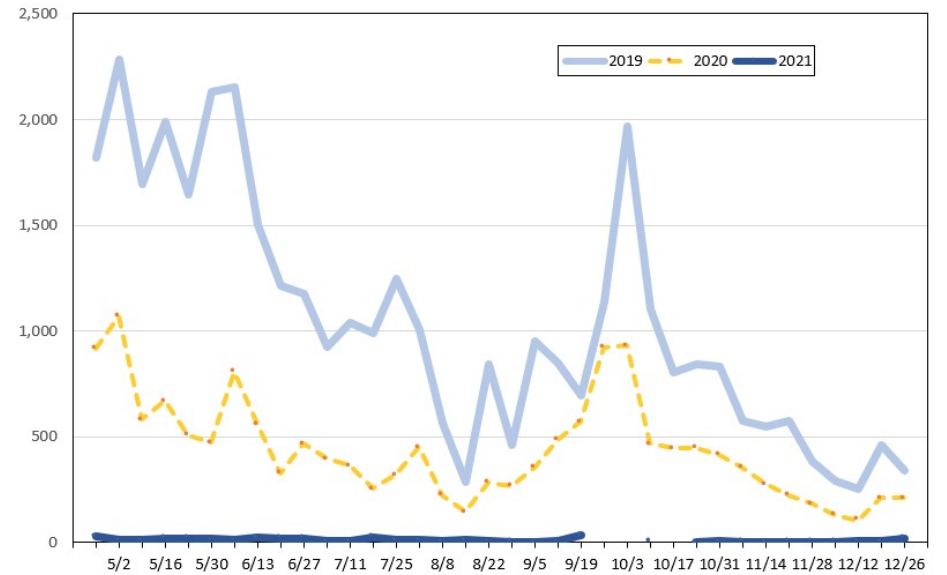
Source: Global Agency Pro, as of April 13, 2021

**Travel Agency Weekly Bookings for Future Travel to Hawai'i as of April 13, 2021**  
Canada



Source: Global Agency Pro, as of April 13, 2021

**Travel Agency Weekly Bookings for Future Travel to Hawai'i as of April 13, 2021**  
Korea



Source: Global Agency Pro, as of April 13, 2021