

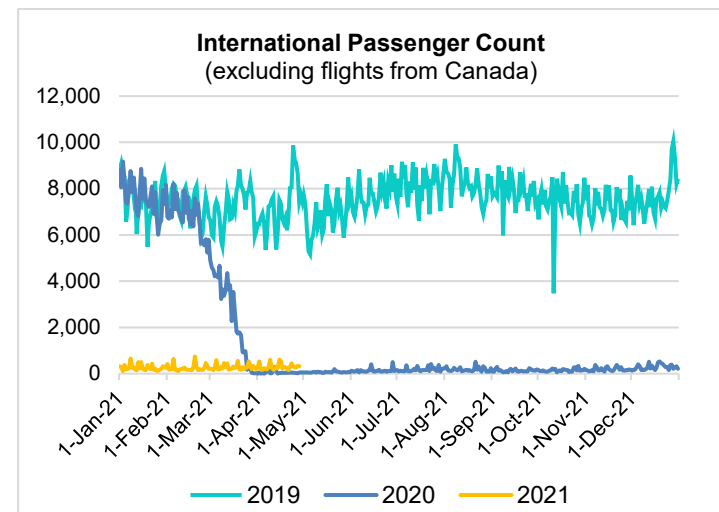
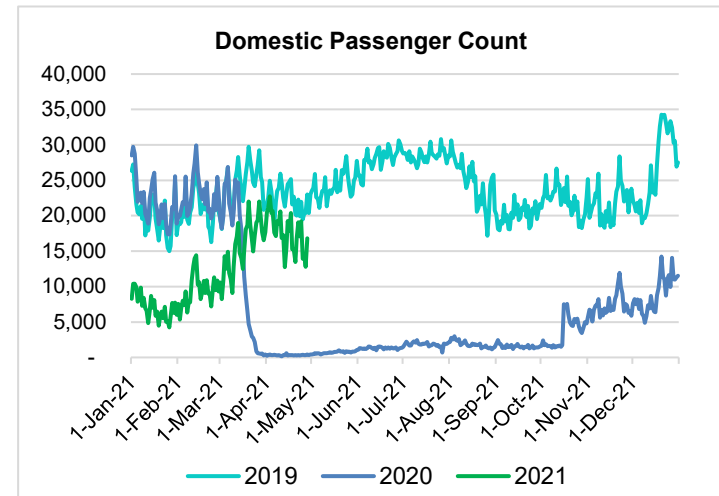
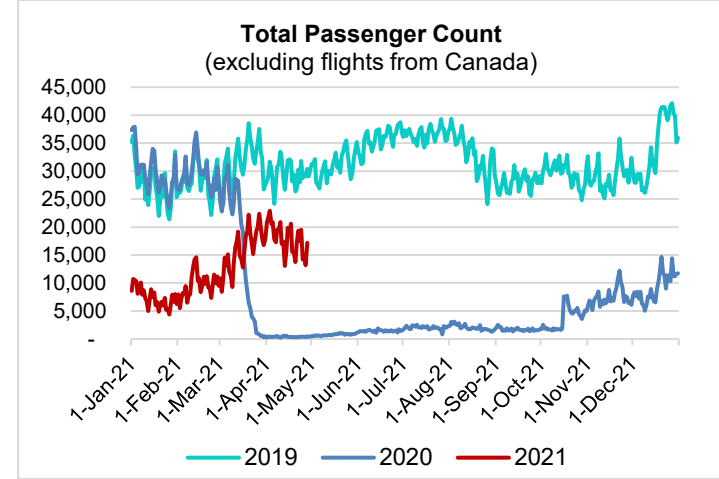
# HTA COVID-19 UPDATE

(Issued: 4/29/21 @ 4:00pm)

Reason for Trip by Arrival Airport - Transpacific Screened Passengers as of 04/28/21	Honolulu (HNL)	Kahului (OGG)	Kona (KOA)	Hilo (ITO)	Lihue (LIH)	Grand Total
Airline Crew	551	257	106	0	53	967
Connecting Flight (Transit)	574	73	2	0	1	650
Corporate Meeting	7	2	2	0	2	13
Essential Worker	88	26	15	0	7	136
Honeymoon	25	15	6	0	1	47
Incentive Trip	6	4	0	0	0	10
Intended Resident	78	14	23	0	3	118
Military or Federal Government	135	1	0	0	4	140
Other	91	34	12	0	5	142
Other Business	85	48	15	0	22	170
Pleasure/Vacation	5,269	4,425	1,239	0	635	11,568
Returning Resident	1,370	233	163	0	61	1,827
Sports Event	0	4	0	0	0	4
To Attend School	14	0	0	0	0	14
To Get Married	9	17	7	0	1	34
Visiting Friends or Relatives	1,423	298	219	0	102	2,042
<b>Grand Total</b>	<b>9,725</b>	<b>5,451</b>	<b>1,809</b>	<b>0</b>	<b>897</b>	<b>17,882</b>

Source: Safe Travels program developed by the State of Hawaii Office of Enterprise Technology Services

Note: The data is preliminary and subject to change



Novel Coronavirus in Hawaii	
COVID-19 Positive Cases	
Cumulative totals as of 12:00pm on April 29, 2021	
<b>Total Confirmed Cases</b>	<b>32,232* (122 new)</b>
Hawaii	2,687
Kauai	231
Lanai	111
Maui	3,371†
Molokai	37
Oahu	24,749
Out of State	1046
Pending	0
Required Hospitalization	2,131‡
Hawaii Deaths	483
Cases in the past 14 days	1,116*

**Footnotes for COVID-19 Cases**

\*  
 \*\*Using cases reported in the past 14 days provides a rough approximation of the number of cases currently meeting criteria for isolation. This proxy number for "active cases" resolves classification issues for cases unable to be reached or who are out of jurisdiction, for whom precise release from isolation date may not be possible to determine. It is also not influenced by lags in data entry. (This total does not include Hawaii residents diagnosed outside of Hawaii)

†One case is a Lanai resident whose exposure is on Maui Island and who will be remaining on Maui Island for the interim.

‡Includes Hawaii residents hospitalized out of state.

§Includes cases that meet isolation release criteria (Isolation should be maintained until at least 24 hours after resolution of fever and myalgia without the use of antipyretics OR at least 10 days have passed since symptom onset, whichever is longer). (The cases that have died and one case that has left the jurisdiction have been removed from these counts). Positive cases include confirmed cases, and Hawaii residents and non-residents; data are preliminary and subject to change. Note that CDC provides case counts according to states of residence.

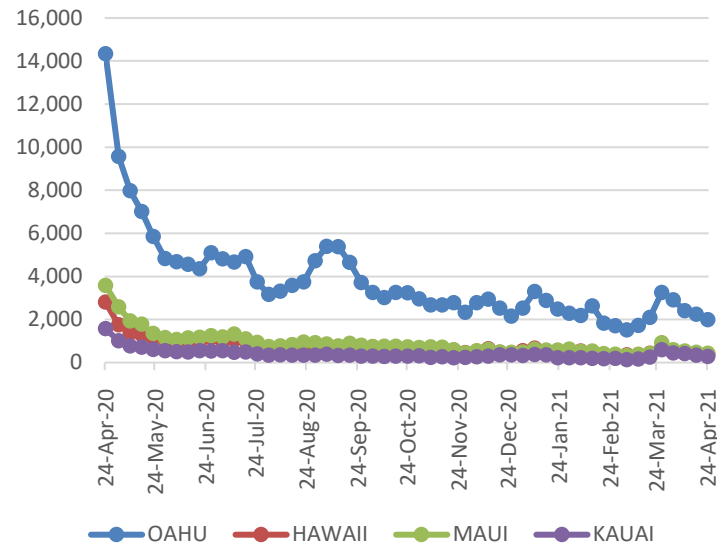
### April 28 (Wed) \*

	Total	On domestic flights to					On int'l flights from		
		State	Oahu	Maui	Big isl	Kauai	All	Japan	Others
2021	17,155	16,835	8,900	5,195	1,981	759	320	75	245
2020	460	420	332	67	0	21	40	0	40
2019	30,404	22,983	12,662	6,047	2,256	2,018	7,421	5,372	2,049
2018	27,970	20,800	11,436	5,185	2,287	1,892	7,170	5,088	2,082

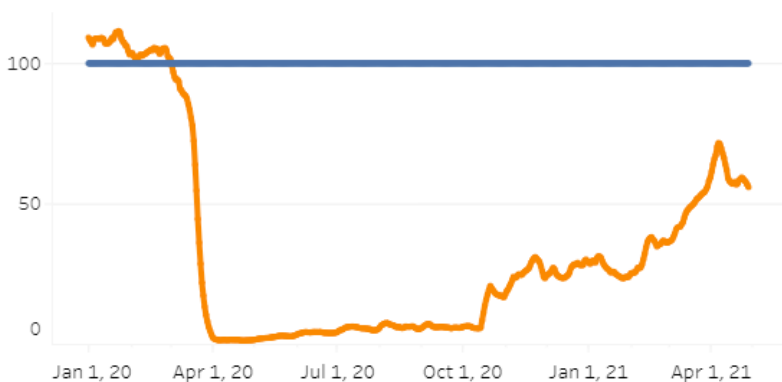
### April (daily avg.) \*

	Total	On domestic flights to					On int'l flights from		
		State	Oahu	Maui	Big isl	Kauai	All	Japan	Others
2021	17,899	17,598	9,084	5,472	2,231	812	301	75	226
2020	383	326	272	25	20	8	58	4	54
2019	29,476	22,327	12,029	5,989	2,464	1,845	7,149	4,637	2,513
2018	28,163	21,084	11,279	5,423	2,372	2,010	7,079	4,423	2,656

### 2021 Initial Weekly Unemployment Claims by Island



### Comparison with 2019, a pre-COVID 19 year \* (Index with passengers on the same day in 2019=100)



### Weekly Unemployment Initial Claims: April 24, 2021

<b>State of Hawaii</b>	<b>3,216</b>
<b>C&amp;C of Oahu</b>	<b>1,986</b>
Honolulu	925
Kaneohe	158
Waipahu	903
<b>Hawaii County</b>	<b>379</b>
Hilo	209
Kona	170
<b>Maui County</b>	<b>430</b>
Wailuku	413
Molokai	17
<b>Kauai County</b>	<b>285</b>
<b>Agent (filed in Hawaii against another state)</b>	<b>136</b>

## News Highlights

April 29, 2021

**Honolulu Star Advertiser:** [Hawaii lawmakers pass budget and suspend pay raises](#)

**KHON2:** [Travelers going through Hawaii's airports can expect a lot of changes](#)

**KITV4:** [New Hawaii Tourism Authority ad campaign aims to bring back visitors from Japan back to Hawaii](#)

**The Maui News:** [As mask rules differ, Maui businesses call for clarity](#)

**The Garden Island:** [6 new COVID cases Wednesday](#)

**West Hawaii Today:** [Five new COVID-19 cases reported, three hospitalized on Big Island](#)

**San Francisco Chronicle:** [A boy with COVID died on a family trip to Hawaii. Should parents be worried?](#)

**Associated Press:** [Bill would allow additional tax on Hawaii's tourist lodging](#)

**Travel Weekly:** [CDC alters rules on test sailings, moving cruise lines closer to restart](#)

### Helpful Resources

**Department of Health**  
<https://hawaiiicovid19.com/>

**Hawaii Tourism Authority**  
<https://www.hawaiitourismauthority.org/covid-19-updates/>

**Dept. of Business, Economic Development & Tourism**  
<https://dbedt.hawaii.gov/economic/covid19/>

**Department of Transportation**  
<https://hidot.hawaii.gov/coronavirus/>